

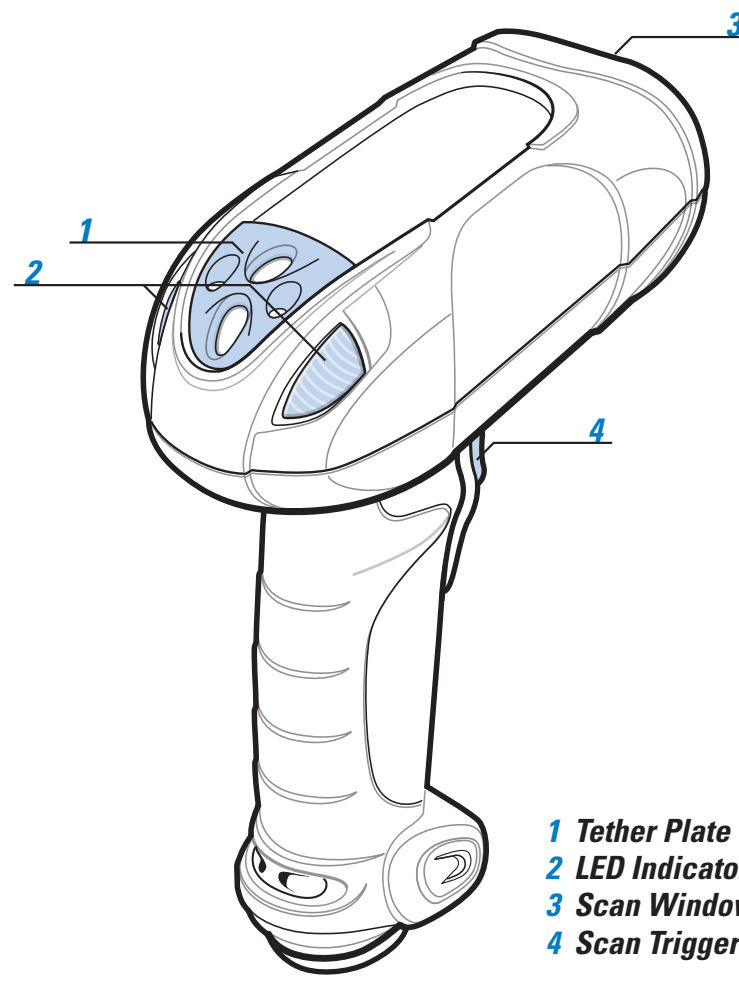
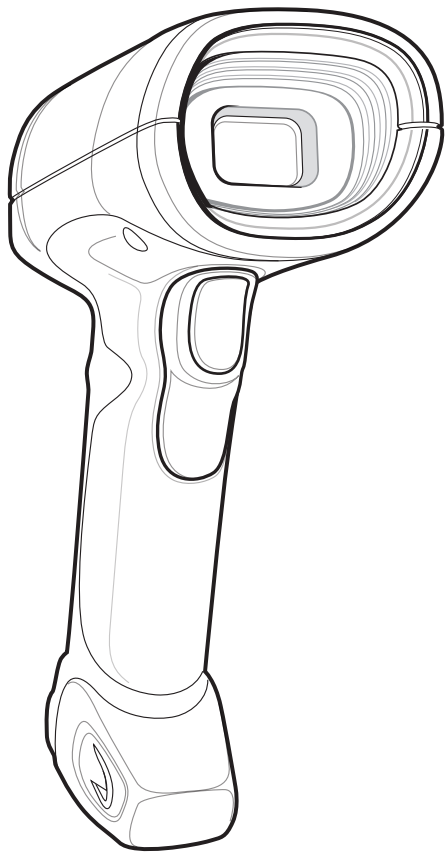
DS3508

Quick Start Guide

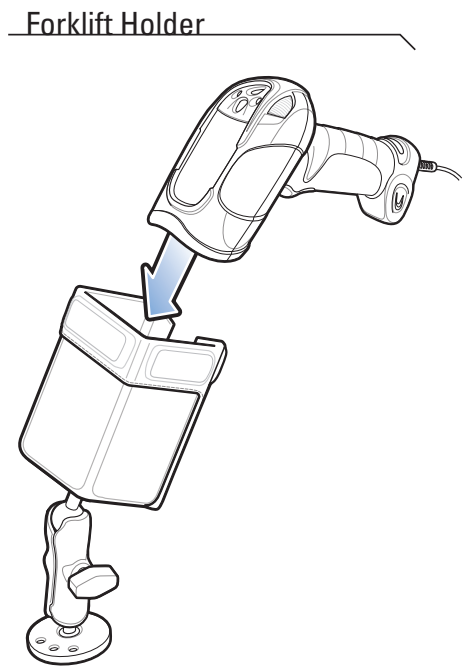
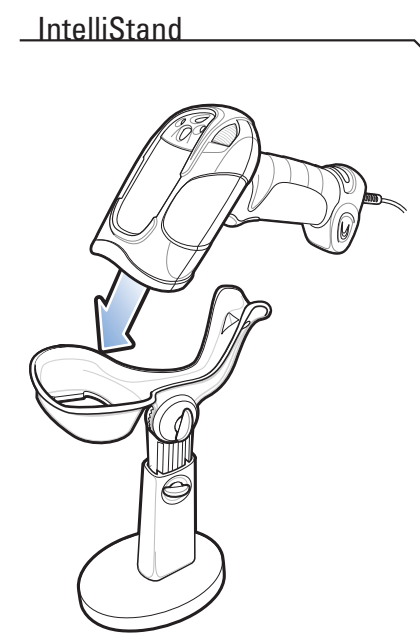
<http://www.zebra.com/ds3508>

See Product Reference Guide for detailed information

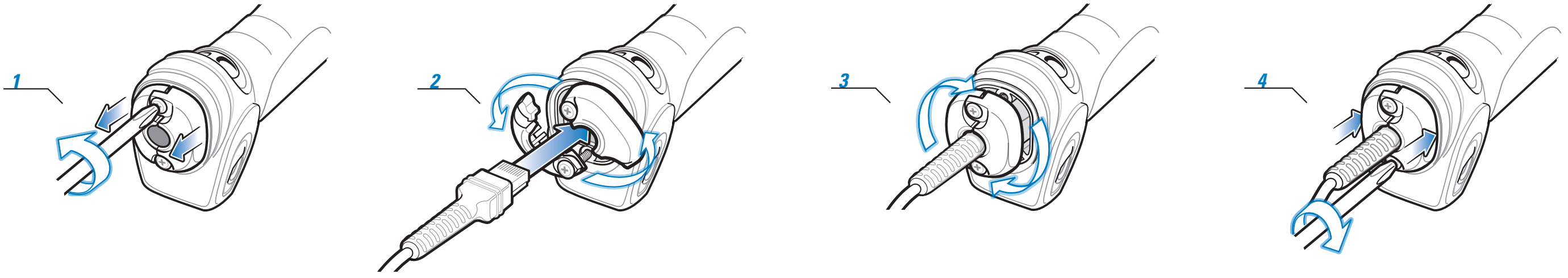
POST IN WORK AREA



- 1 Tether Plate
- 2 LED Indicators
- 3 Scan Window
- 4 Scan Trigger

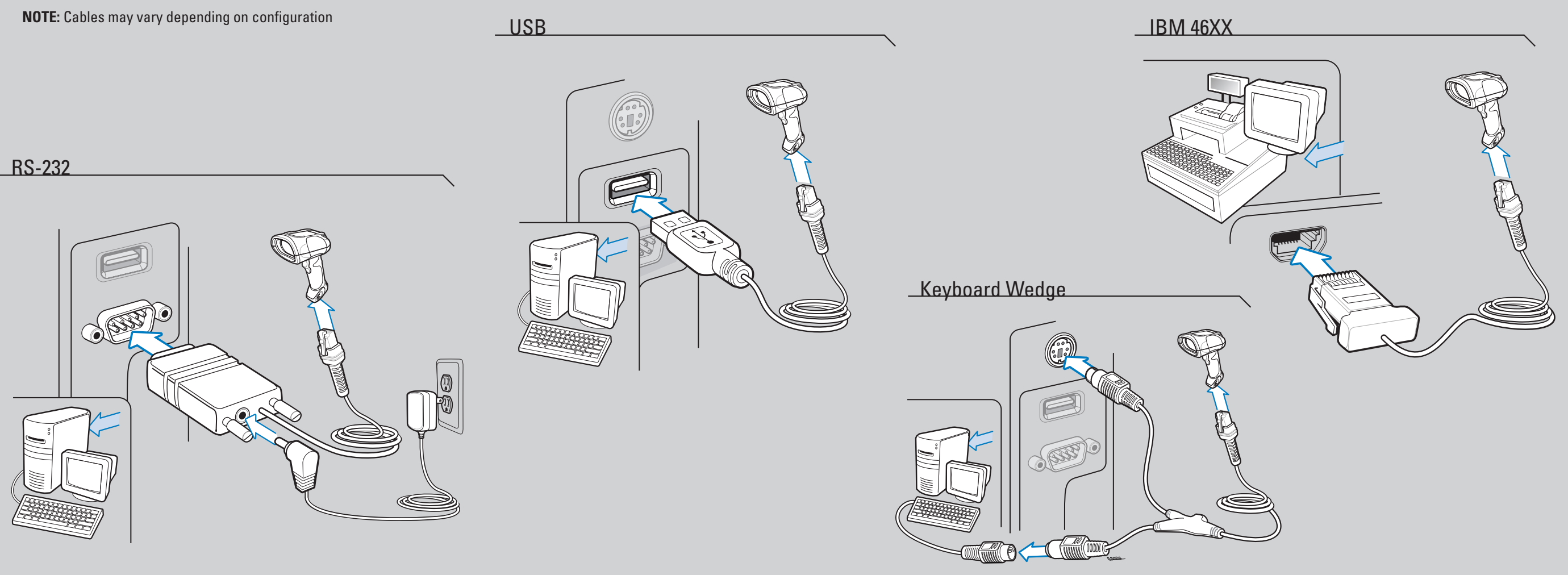


CORD ATTACHMENT



HOST INTERFACES

NOTE: Cables may vary depending on configuration



TROUBLESHOOTING

Scanner not working

- No power to scanner**
Check system power; ensure power supply, if required, is connected
- Incorrect interface cable used**
Ensure that correct interface cable is used
- Interface/power cables are loose**
Check for loose cable connections

Scanner not decoding bar code

- Scanner not programmed for bar code type**
Ensure scanner is programmed to read type of bar code being scanned
- Bar code unreadable**
Ensure bar code is not defaced; try scanning test bar code of same bar code type
- Distance between scanner and bar code incorrect**
Move scanner closer to or further from bar code

Scanner decoding bar code, but data not transmitting to host

- Scanner not programmed for correct host interface**
Check scanner host parameters or edit options
- Interface cable is loose**
Check for loose cable connections

Scanned data incorrectly displayed on host

- Scanner not programmed for correct host interface**
Check scanner host parameters or edit options

DS3508 PROGRAMMING BAR CODES

Set Defaults



SET DEFAULTS

IBM 46XX Host Types



PORT 5B

Keyboard Wedge Host Types



IBM PC/AT and IBM PC COMPATIBLE

USB Host Types



HID KEYBOARD EMULATION



PORT 9B

RS-232 Host Types



STANDARD RS-232



NIXDORF RS-232 MODE B

Scan to Add an Enter Key (Carriage Return/Line Feed)



SCAN OPTIONS



ICL RS-232



FUJITSU RS-232



<DATA>-<SUFFIX>



NIXDORF RS-232 MODE A



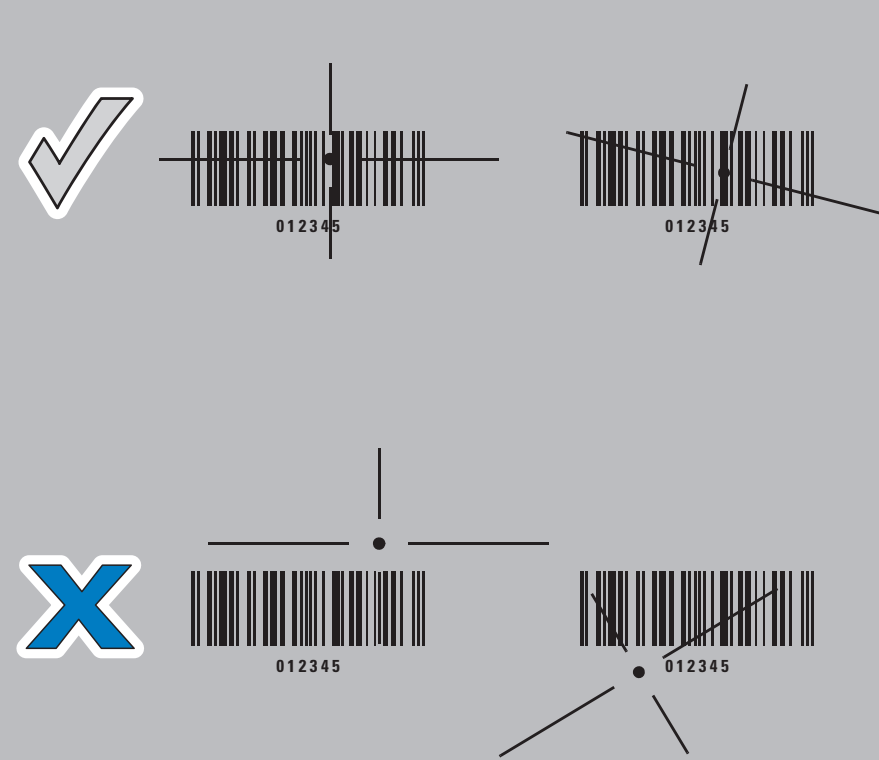
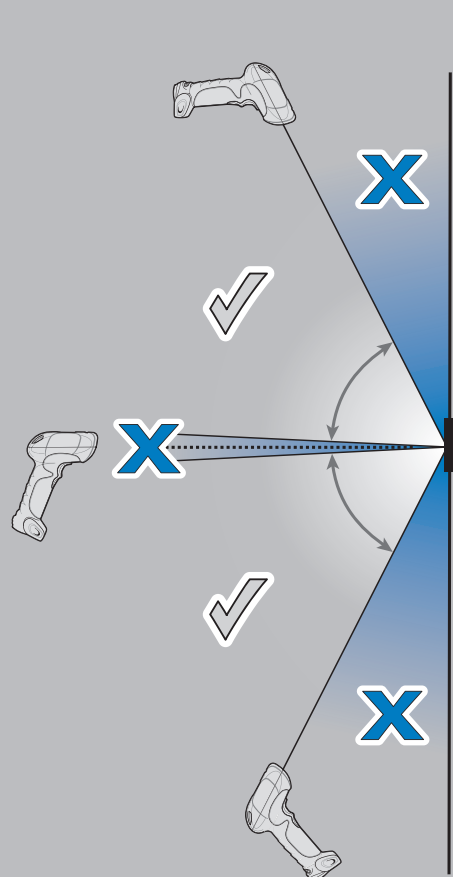
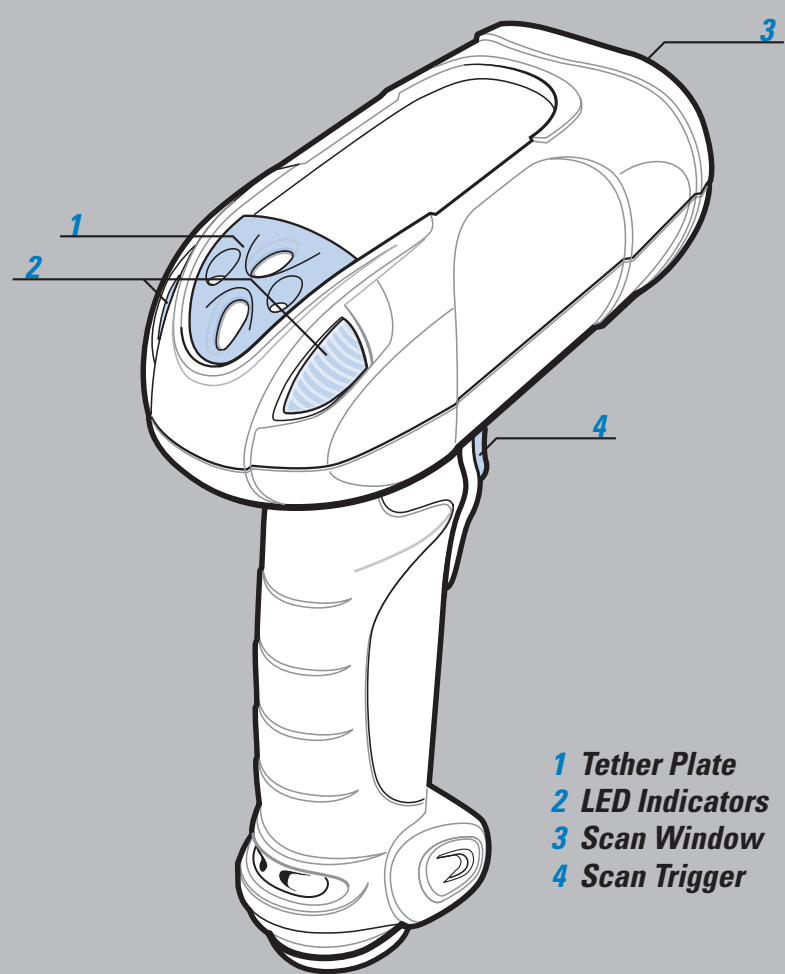
OPOS/JPOS



ENTER

Aiming

Proper Scanning



ALTERNATE LEFT AND RIGHT HANDS
TAKING BREAKS AND TASK ROTATION RECOMMENDED

OPTIMUM UPRIGHT BODY POSTURE

AVOID EXTREME WRIST ANGLES

BEEPER INDICATIONS

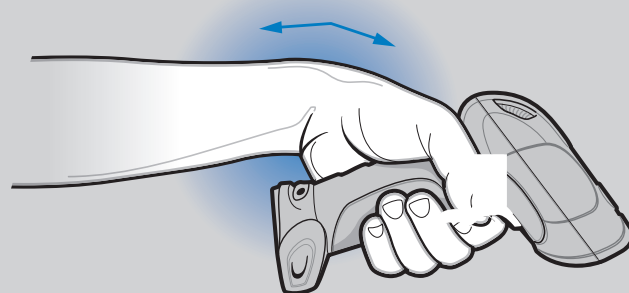
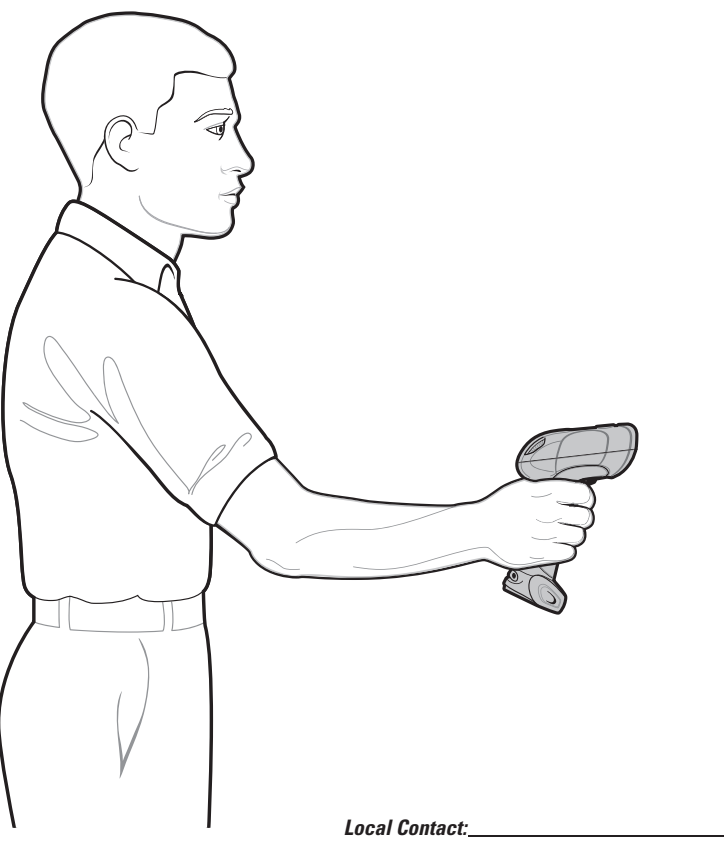
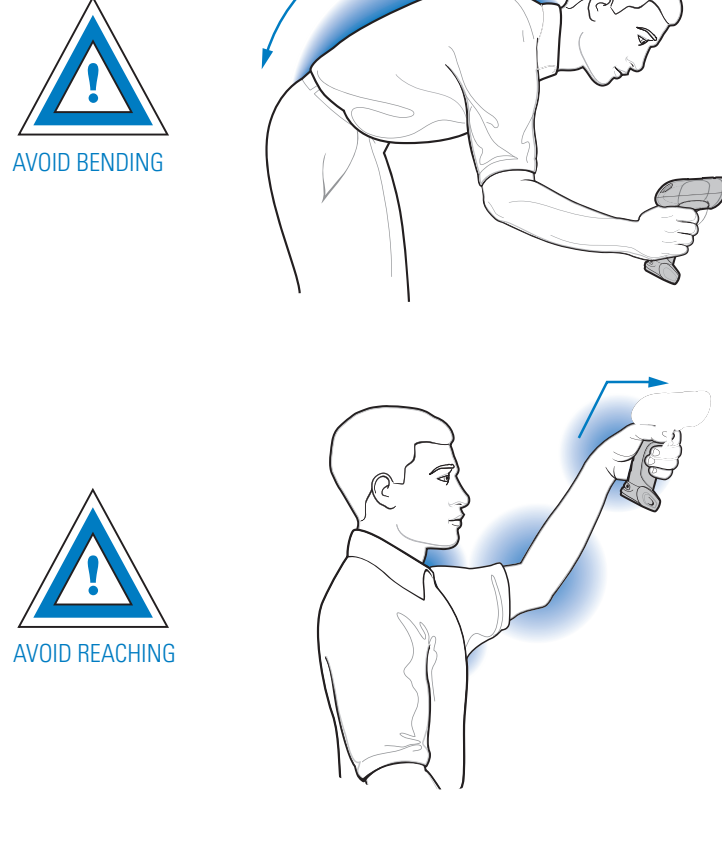


Table with 3 columns: Standard Use (Low/medium/high beep, Short high beep, 4 long low beeps), Parameter Menu Scanning (High/low/high/low beep, High/low beep, Low/high beep), LED Indications (Off, Green, Red).

OPTIMUM BODY POSTURE

Optimum Body Posture for Low Scanning

Optimum Body Posture for Extended Range Scanning



REGULATORY INFORMATION

©2016 Symbol Technologies LLC, a subsidiary of Zebra Technologies Corporation. All rights reserved.

Zebra reserves the right to make changes to any product to improve reliability, function, or design. Zebra does not assume any product liability arising out of, or in connection with, the application or use of any product, circuit, or application described herein.

Warranty
For the complete Zebra hardware product warranty statement, go to: http://www.zebra.com/warranty.

For Australia Only
This warranty is given by Zebra Technologies Asia Pacific Pte. Ltd., 71 Robinson Road, #05-02/03, Singapore 068895, Singapore.

Service Information
If you have a problem using the equipment, contact your facility's Technical or Systems Support. If there is a problem with the equipment, they will contact the Zebra Global Support Center at: http://www.zebra.com/support.

Waste Electrical and Electronic Equipment (WEEE)

English: For EU Customers: All products at the end of their life must be returned to Zebra for recycling. For information on how to return product, please go to: http://www.zebra.com/warranty.

Ergonomic Recommendations

Caution: In order to avoid or minimize the potential risk of ergonomic injury follow the recommendations below. Consult with your local Health & Safety Manager to ensure that you are adhering to your company's safety programs to prevent employee injury.

- Reduce or eliminate repetitive motion
• Maintain a natural position
• Reduce or eliminate excessive force
• Keep objects that are used frequently within easy reach
• Perform tasks at correct heights
• Reduce or eliminate vibration
• Reduce or eliminate direct pressure
• Provide adjustable workstations
• Provide adequate clearance
• Provide a suitable working environment
• Improve work procedures.

Regulatory Information
This guide applies to Model Number: DS3508. All Zebra devices are designed to be compliant with rules and regulations in locations they are sold and will be labeled as required.

Any changes or modifications to Zebra equipment, not expressly approved by Zebra, could void the user's authority to operate the equipment.

CAUTION:
Use ONLY a Zebra approved and UL Listed accessories.

Power Supply
Use ONLY a LISTED Zebra, Type no. 50-14000 (5Vdc/0.5A minimum), or PWR5-14000 (5Vdc/0.5A minimum), Direct Plug-in Power Supply, marked Class 2 or LPS (IEC60950-1, SELV). Use of alternative Power Supply will invalidate any approvals given to this device and may be dangerous.

Japan (VCCI) - Voluntary Control Council for Interference

この装置は、情報処理装置等電波障害自主規制協議会 (VCCI) の基準に基づくクラスBの電磁技術装置です。この装置は、家庭環境で使用することを目的としています。この装置がラジオやテレビジョン受信機に近接して使用されると、受信障害を引き起こすことがあります。取扱説明書に従って正しい取り扱いをして下さい。

Korean Warning Statement for Class B ITE

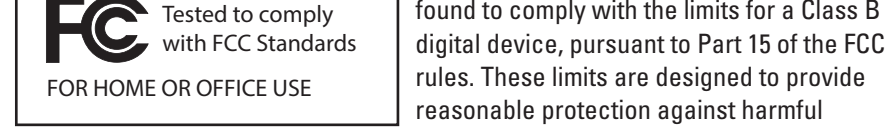
Table with 2 columns: 기종별 (B급 기기 (가정용 방송통신기기)), 사용자안내문 (이 기기는 가정용(B급)으로 전자과적합등록을 한 기기로서 주로 가정에서 사용하는 것을 목적으로 하며, 모든 지역에서 사용할 수 있습니다.)

Ukraine
Дане обладнання відповідає вимогам технічного регламенту №1057, № 2008 на обмеження щодо використання деяких небезпечних речовин в електричних та електронних пристроях.

Table with 2 columns: 有害物质 (有害物質), 部件名称 (Parts). Rows include Metal Parts, Circuit Modules, Cables and Cable Assemblies, Plastic and Polymeric Parts, Optics and Optical Components, Batteries.

本表格依据SJ/T 11364 的规定编制。
0: 表示该有害物质在该部件所有均质材料中的含量均在 GB/T 26572 规定的限量要求以下。
X: 表示该有害物质至少在该部件的某一均质材料中的含量超出GB/T 26572 规定的限量要求。(企业可在此处, 根据实际情况下表中打“X”的技术原因进行进一步说明。)

Radio Frequency Interference Requirements



Note: This equipment has been tested and found to comply with the limits for a Class B digital device, pursuant to Part 15 of the FCC rules. These limits are designed to provide reasonable protection against harmful interference in a residential installation.

- Reorient or relocate the receiving antenna
• Increase the separation between the equipment and receiver
• Connect the equipment into an outlet on a circuit different from that to which the receiver is connected
• Consult the dealer or an experienced radio/TV technician for help.

Radio Frequency Interference Requirements - Canada

This Class B digital apparatus complies with Canadian ICES-003. Cet appareil numérique de la classe B est conforme à la norme NMB-003 du Canada.

Marking and European Economic Area (EEA)



Statement of Compliance
Zebra hereby declares that this device is in compliance with all applicable Directives, 2014/30/EU, 2014/35/EU and 2011/65/EU. The full text of the EU Declaration of Conformity is available at the following internet address: http://www.zebra.com/doc.

Laser Devices

Complies with 21CFR1040.10 & 1040.11 except for deviations pursuant to Laser Notice NO. 50, dated June 24, 2007 and IEC/EN 60825-1:2007 and/or IEC/EN 60825-1:2014.

Class 2 laser scanners use a low power, visible light diode. As with any very bright light source, such as the sun, the user should avoid staring directly into the light beam. Momentary exposure to a Class 2 laser is not known to be harmful.

Scanner Labeling



CAUTION: CLASS 2 LASER LIGHT WHEN OPEN. DO NOT STARE INTO THE BEAM. ATTENTION: LUMIERE LASER EN CAS D'OUVERTURE. NE PAS REGARDER DANS LE RAYON. VORSICHT: LASERLICHT KLASSE 2. WENN ANSCHLÜSSIG GEÖFFNET, NICHT IN DEN STRAHLEN BLICKEN. 注意: 打开时及取纸失效时有激光辐射 勿直视光束

Zebra Technologies Corporation, Lincolnshire, IL U.S.A. http://www.zebra.com

Zebra and the stylized Zebra head are trademarks of ZIH Corp., registered in many jurisdictions worldwide. All other trademarks are the property of their respective owners.

©2016 Symbol Technologies LLC, a subsidiary of Zebra Technologies Corporation. All rights reserved.



72-124802-04 Rev A - June 2015