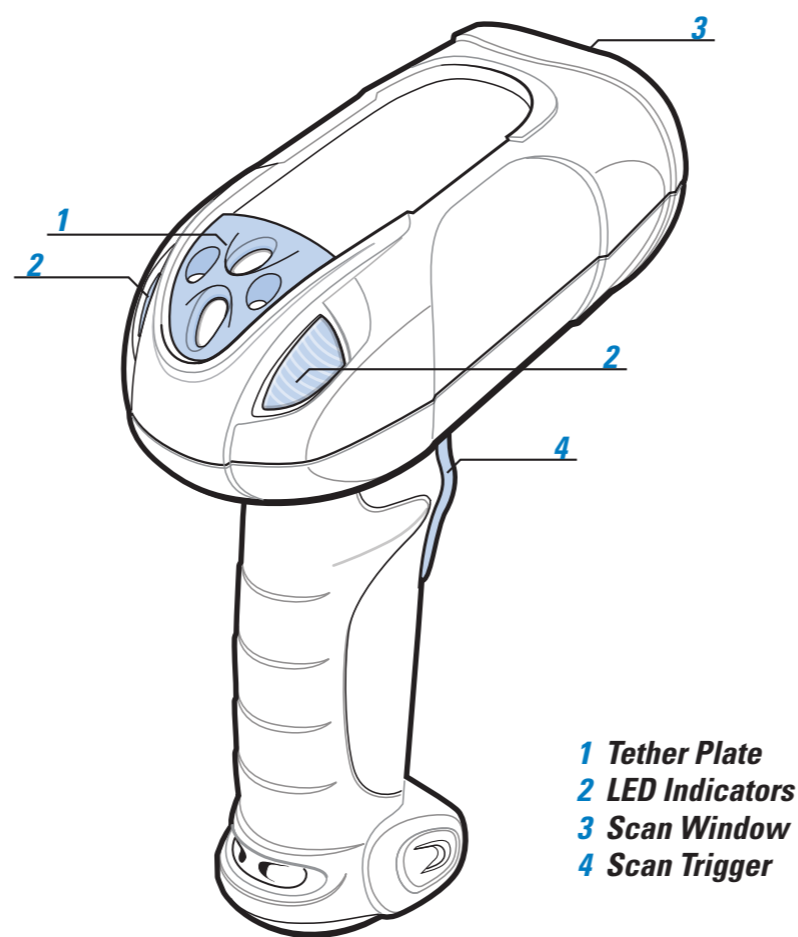


DS3578 with FIPS

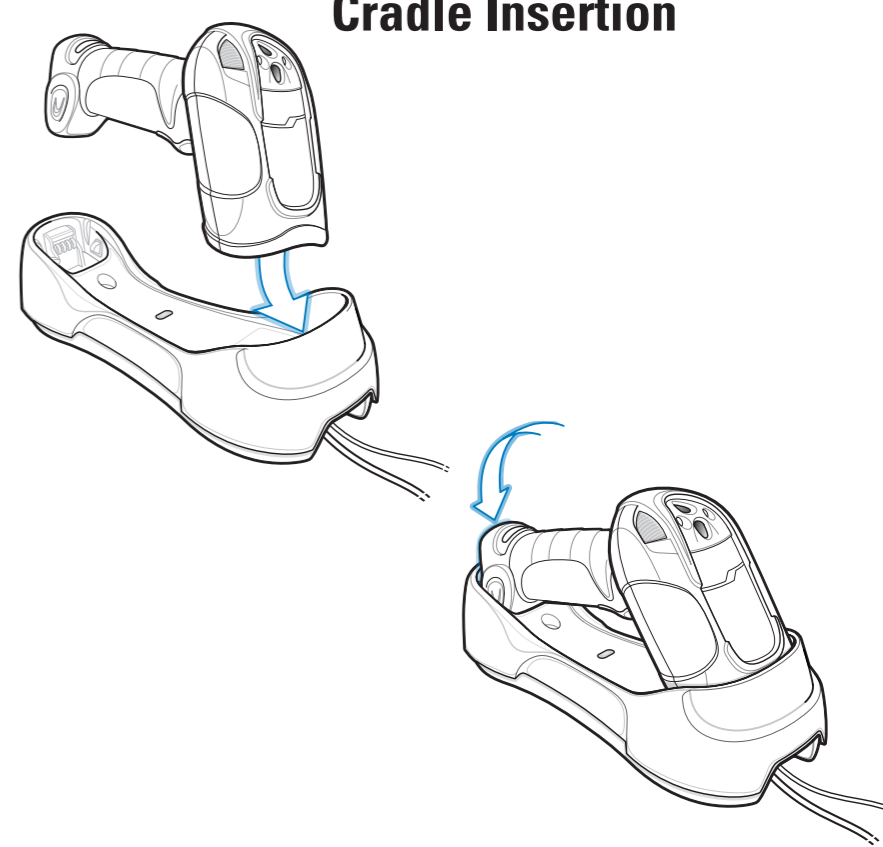
Quick Start Guide

See Product Reference Guide for detailed information

POST IN WORK AREA

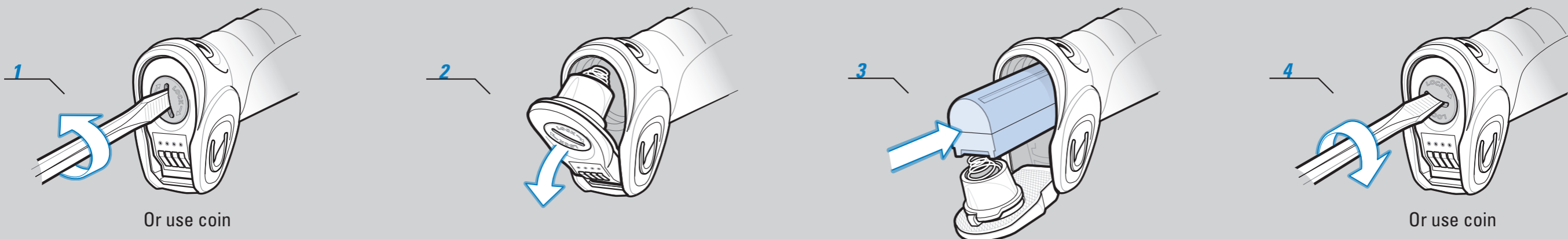


Cradle Insertion

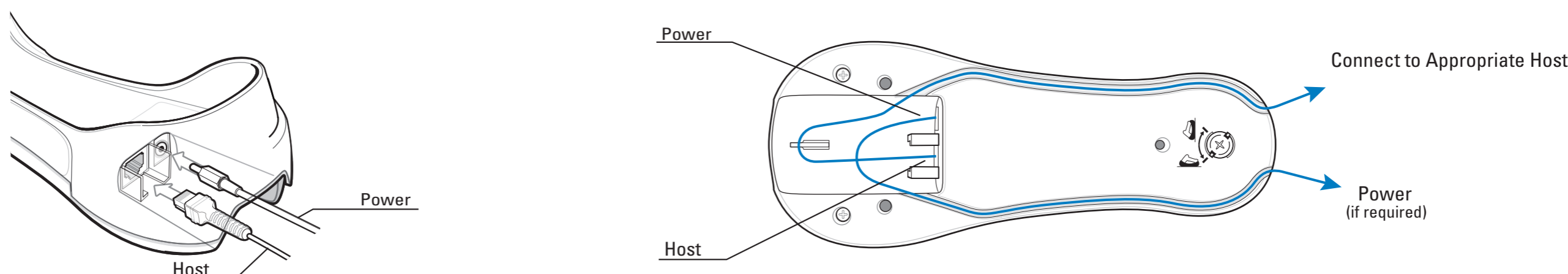


Caution: DS3478 cordless scanners are incompatible with STB3508/3578 cradles. DS3578 cordless scanners are incompatible with STB3408/3478 cradles.

STEP 1 - BATTERY INSERTION/REMOVAL



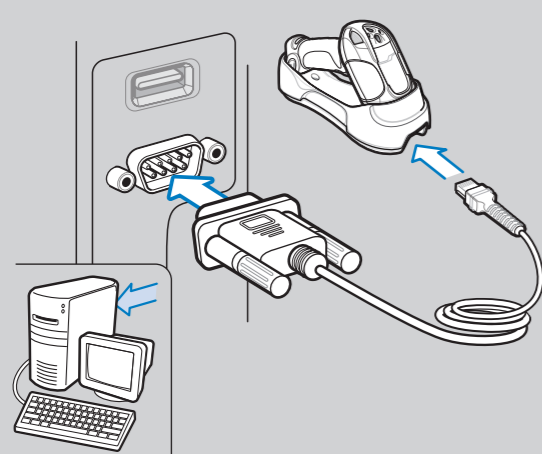
STEP 2 - CRADLE CABLE CONNECTION



STEP 3 - CONNECT HOST INTERFACE

NOTE: Cables may vary depending on configuration

RS-232



STEP 4 - SET UP INTERFACE (Scan Host Bar Codes)

RS-232

Scan **ONE** of the bar codes below



STANDARD RS-232



NIXDORF RS-232 MODE B



NIXDORF RS-232 MODE A



ICL RS-232

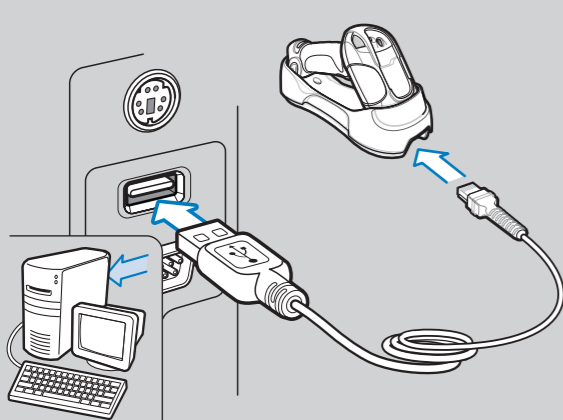


FUJITSU RS-232



OPOS/JPOS

USB



USB

Scan **ONE** of the bar codes below



HID KEYBOARD EMULATION



SNAP! WITH IMAGING
(For use with hands-free base only)



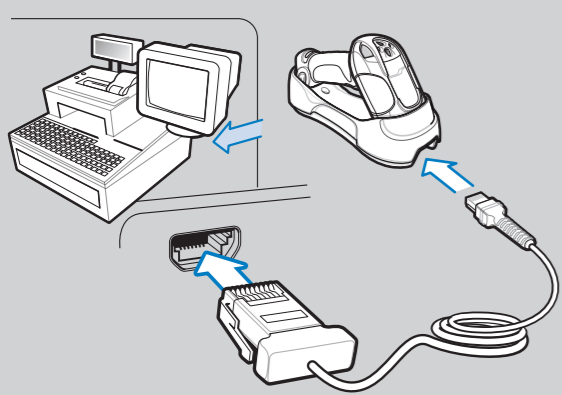
IBM HAND-HELD USB



SNAP! WITHOUT IMAGING
(For use with hands-free base only)

NOTE: SNAP! is for use with FIPS enabled scanner and FIPS enabled cradle only.

IBM 46XX



IBM 46XX

Scan **ONE** of the bar codes below

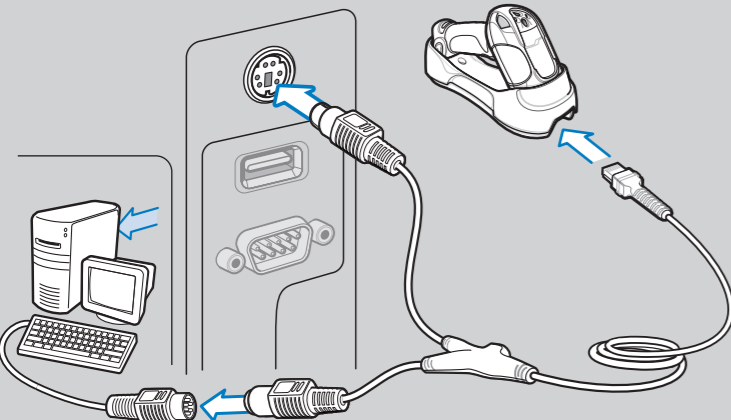


PORT 5B



PORT 9B

Keyboard Wedge



Keyboard Wedge

Scan bar codes below



IBM PC/AT and IBM PC COMPATIBLE

123SCAN2

123Scan² is an easy-to-use, PC-based software tool that enables rapid and easy customized setup via a bar code or USB cable. For more information, visit: <http://www.zebra.com/123Scan2>

PROGRAMMING BAR CODES

Set Defaults

Note: The scanner connection to the cradle is dissolved when Set Defaults is scanned.



SET DEFAULTS

Carriage Return/Line Feed



SCAN OPTIONS

Radio Communications Host Types



CRADLE HOST



SERIAL PORT PROFILE (SLAVE)



BLUETOOTH KEYBOARD EMULATION (HID SLAVE)



SERIAL PORT PROFILE (MASTER)

FIPS MODE

NOTE: Requires a FIPS enabled DS3578 scanner (DS3578-XXF005WR) and FIPS enabled cradle (STB/FLB3578-CF007WR).

FIPS

Scan **ONE** of the bar codes below



Enable FIPS



*Disable FIPS

Unpairing/Disconnection



UNPAIR/DISCONNECT



ENTER

