

DS6708

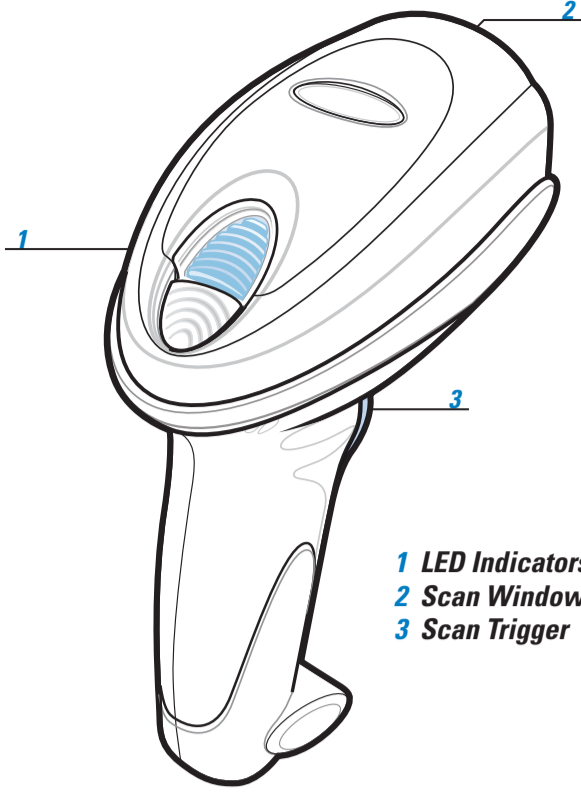
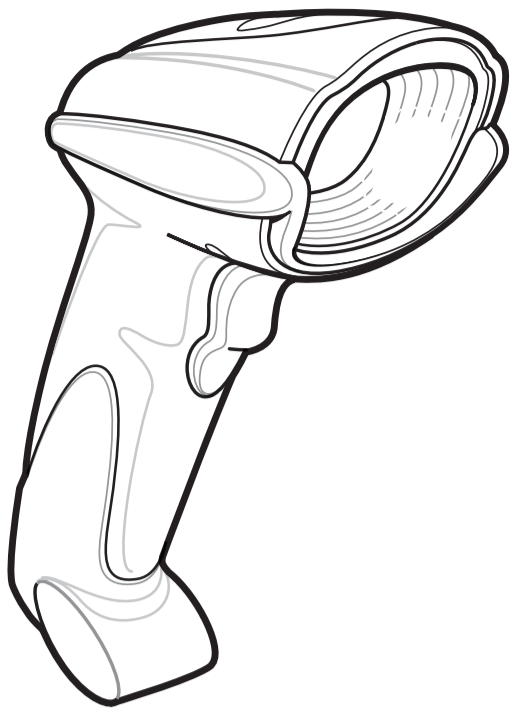
Quick Start Guide

<http://www.zebra.com/ds6708>

See Product Reference Guide for detailed information

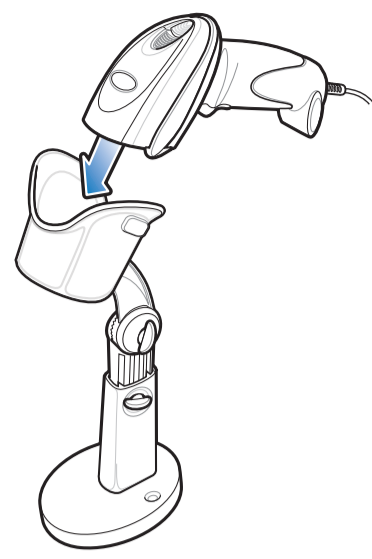
ACCESSORIES

POST IN WORK AREA



- 1 LED Indicators
- 2 Scan Window
- 3 Scan Trigger

IntelliStand



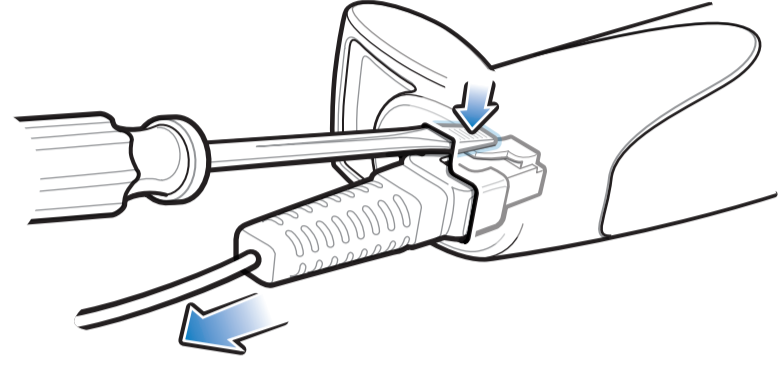
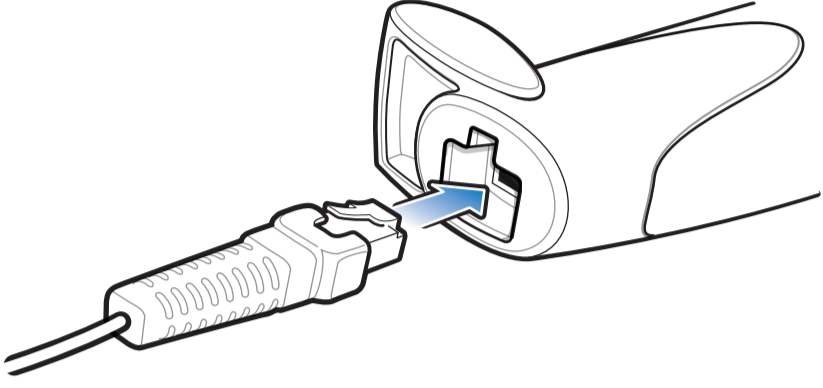
Wall Mount



Desk Cup



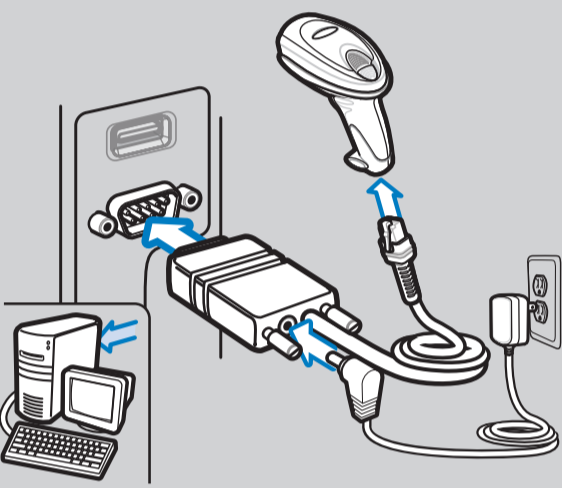
CORD ATTACHMENT/REMOVAL



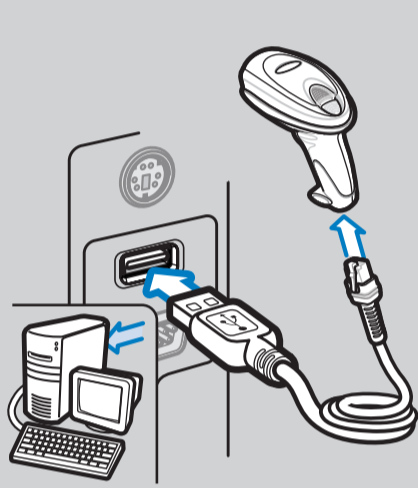
HOST INTERFACES

NOTE: Cables may vary depending on configuration

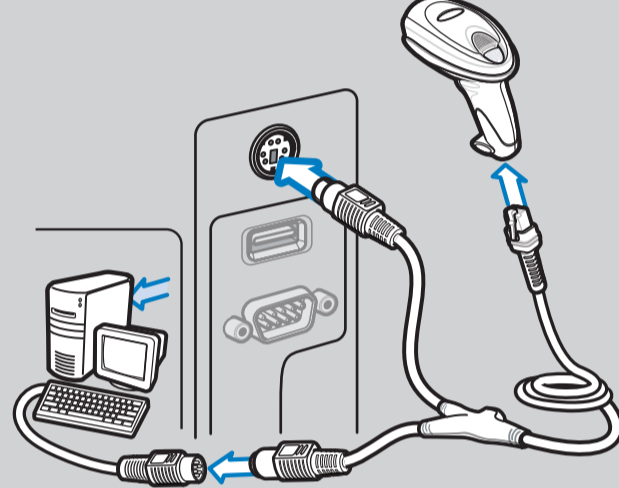
RS-232



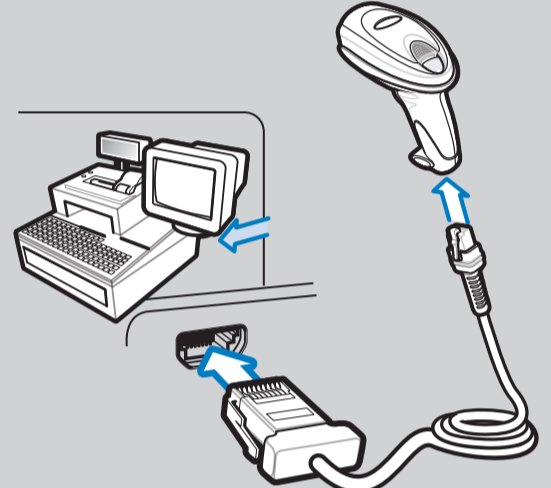
USB



Keyboard Wedge



IBM 46XX



TROUBLESHOOTING

Scanner not working

No power to scanner

Check system power; ensure power supply, if required, is connected

Incorrect interface cable used

Ensure that correct interface cable is used

Interface/power cables are loose

Ensure all cable connections are secure

Scanner not decoding bar code

Scanner not programmed for bar code type

Ensure scanner is programmed to read type of bar code being scanned

Bar code unreadable

Ensure bar code is not defaced; try scanning test bar code of same bar code type

Distance between scanner and bar code incorrect

Move scanner closer to or further from bar code

Scanner decoding bar code, but data not transmitting to host

Scanner not programmed for correct host interface

Scan appropriate host parameter bar codes

Interface cable is loose

Ensure all cable connections are secure

Scanned data incorrectly displayed on host

Scanner not programmed for correct host interface

Scan appropriate host parameter bar codes

DS6708 PROGRAMMING BAR CODES

Set Defaults



SET DEFAULTS

Enter Key (Carriage Return/Line Feed)



<DATA><SUFFIX 1>

IBM 46XX Host Types



PORT 5B

USB Host Types



HID KEYBOARD EMULATION

Level



LEVEL



PORT 9B



IBM HAND-HELD USB

RS-232 Host Types



STANDARD RS-232



NIXDORF RS-232 MODE B

Keyboard Wedge Host Types



IBM PC/AT and IBM PC COMPATIBLE



ICL RS-232



FUJITSU RS-232

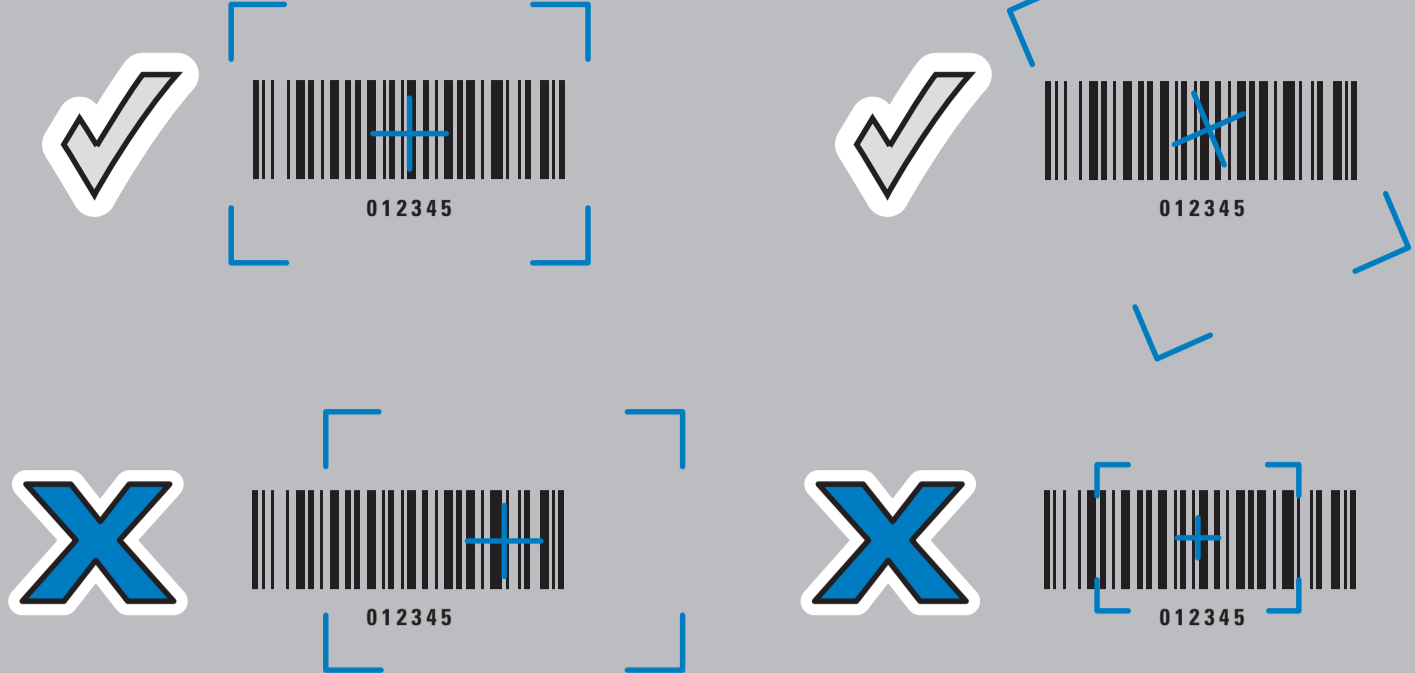
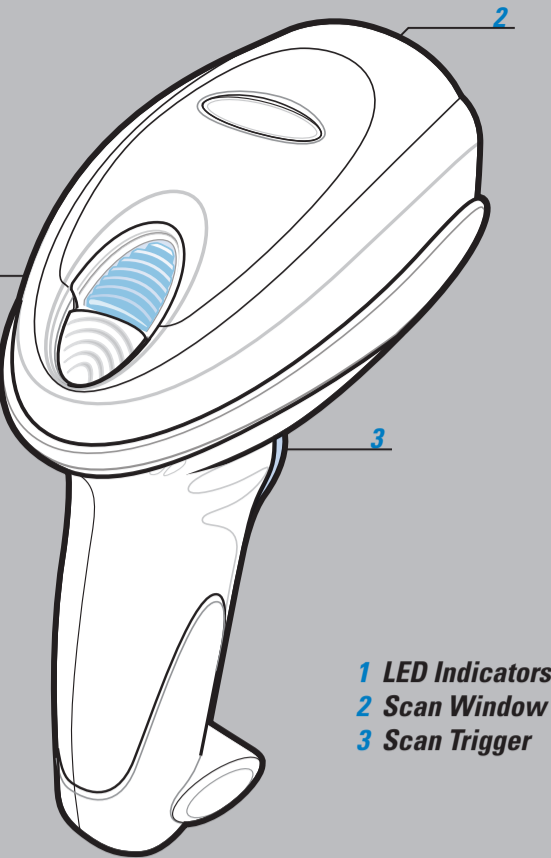


NIXDORF RS-232 MODE A



OPOS/JPOS

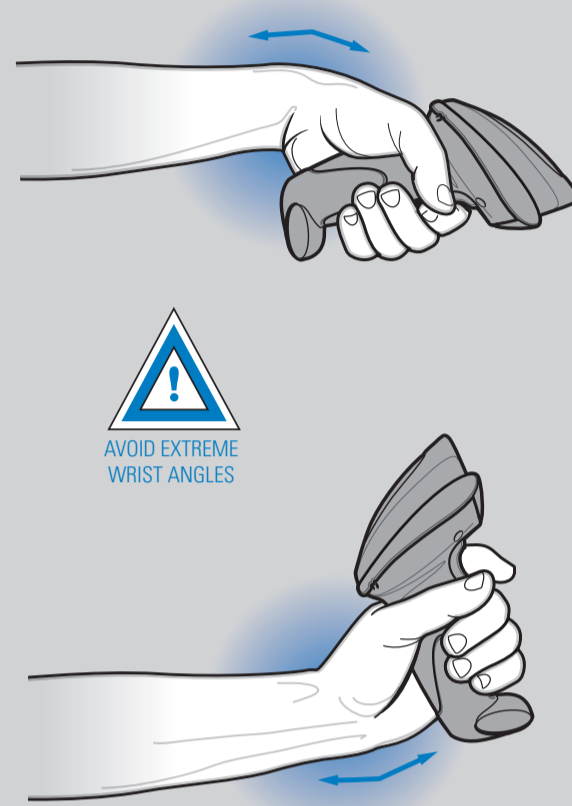
Aiming



OPTIMUM ARM POSITION

AVOID EXTREME WRIST ANGLES

AVOID BENDING AND REACHING



Alternate left and right hands taking breaks and task rotation recommended

BEEPER INDICATIONS

LED INDICATIONS

Standard Use

Low/medium/high beep Power up	Short medium beep Bar code decoded	4 long low beeps Transmission error detected; data is ignored
-----------------------------------------	----------------------------------------------	-------------------------------------------------------------------------

Off
Scanner is on and ready to scan, or no power to scanner

Green
Bar code is successfully decoded

Red
Transmission error

Parameter Menu Scanning

High/low/high/low beep Successful parameter setting	High/low beep Correct programming sequence performed	Low/high beep Incorrect programming sequence or "Cancel" bar code scanned
---------------------------------------------------------------	----------------------------------------------------------------	-------------------------------------------------------------------------------------

Local Contact: _____

123SCAN²

123Scan² is an easy-to-use, PC-based software tool that enables rapid and easy customized setup via a bar code or USB cable. For more information, visit: <http://www.zebra.com/123Scan2>.

REGULATORY INFORMATION

© 2015 Symbol Technologies, Inc.

Zebra reserves the right to make changes to any product to improve reliability, function, or design. Zebra does not assume any product liability arising out of, or in connection with, the application or use of any product, circuit, or application described herein. No license is granted, either expressly or by implication, estoppel, or otherwise under any patent right or patent, covering or relating to any combination, system, apparatus, machine, material, method, or process in which Zebra products might be used. An implied license exists only for equipment, circuits, and subsystems contained in Zebra products.

Warranty

For the complete Zebra hardware product warranty statement, go to: <http://www.zebra.com/warranty>.

For Australia Only

For Australia Only, this warranty is given by Zebra Technologies Asia Pacific Pte. Ltd., 71 Robinson Road, #05-02/03, Singapore 068895, Singapore. Our goods come with guarantees that cannot be excluded under the Australian Consumer Law. You are entitled to a replacement or refund for a major failure and compensation for any other reasonably foreseeable loss or damage. You are also entitled to have the goods repaired or replaced if the goods fail to be of acceptable quality and the failure does not amount to a major failure.

Zebra Technologies Corporation Australia's limited warranty above is in addition to any rights and remedies you may have under the Australian Consumer Law. If you have any queries, please call Zebra Technologies Corporation at +65 6858 0722. You may also visit our website: <http://www.zebra.com> for the most updated warranty terms.

Service Information

If you have a problem using the equipment, contact your facility's Technical or Systems Support. If there is a problem with the equipment, they will contact the Zebra Support Center at: <http://www.zebra.com/support>.

For the latest version of this guide go to: <http://www.zebra.com/support>.

Power Supply

Use ONLY a LISTED. Type no. 50-14000, or PWR5-14000, Direct Plug-In power supply, marked Class 2 or LPS, or SELV, Rated 5 Vdc, 850 mA Min. (IEC 60950-1). Use of alternative power supply will invalidate any approvals given to this device and may be dangerous.

Waste Electrical and Electronic Equipment (WEEE)

English: For EU Customers: All products at the end of their life must be returned to Zebra for recycling. For information on how to return product, please go to: <http://www.zebra.com/warranty>.

Magyar: Az EU-ban vásárolóknak: Minden termékemet a Zebra vállalatához kell eljuttatni újrahasznosítás céljából. A termék visszajuttatásának módjával kapcsolatos információkat látogasson el a <http://www.zebra.com/warranty> weboldalra.

Malta: Għal klijenti f'EU: Il-prodotti kollha li jkunu waslu f'għajr tal-hajja tal-fattur li għadhom, idur jgħid informazzjoni għand Zebra għar-riċiklaġġ. Għal aktar taġġir dwar kif għandek imbrojta l-prodott, jekk jogħġok zur <http://www.zebra.com/warranty>.

Nederlands: Voor klanten in de EU: alle producten dienen aan het einde van hun levensduur naar Zebra te worden teruggezonden voor recycling. Raadpleeg <http://www.zebra.com/warranty> voor meer informatie over het terugzenden van producten.

Polski: Klienci z obszaru Unii Europejskiej: Produkty wycofane z eksploatacji należy zwrócić do firmy Zebra w celu ich utylizacji. Informacje na temat zwrócenia produktów zwrócić się na stronie internetowej <http://www.zebra.com/warranty>.

Português: Para clientes da UE: todos os produtos no fim de vida devem ser devolvidos à Zebra para reciclagem. Para obter informações sobre como devolver o produto, visite <http://www.zebra.com/warranty>.

Românesc: Pentru clienți din UE: Toate produsele, la sfârșitul duratei lor de funcționare, trebuie returnate la Zebra pentru reciclare. Pentru informații despre returnarea produsului, accesați <http://www.zebra.com/warranty>.

Slovenščina: Pre zakaznikov z krajin EU: Vselej stroje morajo biti po uporabi oddani v Zebra za recikliranje. Za informacije o vračilu izdelka obiščite spletno stran: <http://www.zebra.com/warranty>.

Slovenščina: Za kupce v EU: vsi izdelki se morajo po poteku življenjske dobe vrniti podjetju Zebra za recikliranje. Za informacije o vračilu izdelka obiščite spletno stran: <http://www.zebra.com/warranty>.

Suomi: Asiakkaset Euroopan unionin alueella: Kaikki laitteet on palautettava valmistajalle Zebra-yhtiön, kun tuote ei enää käytössä. Lisätietoja laitteiden palauttamisesta on osoitteessa <http://www.zebra.com/warranty>.

Svenska: För kunder inom EU: Alla produkter som upphört sin livsföring måste returneras till Zebra för återvinning. Information om hur du returnerar produkten finns på <http://www.zebra.com/warranty>.

Türkçe: AB ülkelerindeki tüm müşterilerimizi bilgilendiriyoruz: Tüm cihazları geri döndürdüğünüz için Zebra'ya lütfen teslim ediniz. Ürünleriniz nasıl lütfen teslim ediniz hakkında bilgi için lütfen şu adrese ziyaret edin: <http://www.zebra.com/warranty>.

Ukrainian: Для клієнтів з країн ЄС: всі пристрої після закінчення терміну експлуатації повинні бути надані до компанії Zebra для рециклінгу. Для отримання інформації про це відвідайте веб-сайт: <http://www.zebra.com/warranty>.

Ergonomic Recommendations

Caution: In order to avoid or minimize the potential risk of ergonomic injury follow the recommendations below. Consult with your Local Health & Safety Manager to ensure that you are adhering to your company's safety programs to prevent employee injury.

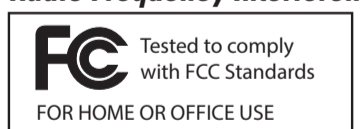
- Reduce or eliminate repetitive motion
- Maintain a natural position
- Reduce or eliminate excessive force
- Keep objects that are used frequently within easy reach
- Perform tasks at correct heights
- Reduce or eliminate vibration
- Reduce or eliminate direct pressure
- Provide adjustable workstations
- Provide adequate clearance
- Provide a suitable working environment
- Improve work procedures.

Regulatory Information

This guide applies to Model Number DS6708. All Zebra devices are designed to be compliant with rules and regulations in locations they are sold and will be labeled as required. Local language translations are available at the following website: <http://www.zebra.com/support>.

Any changes or modifications to Zebra equipment, not expressly approved by Zebra, could void the user's authority to operate the equipment. Antennas: Use only the supplied or an approved replacement antenna. Unauthorized antennas, modifications, or attachments could cause damage and may violate regulations.

Radio Frequency Interference Requirements



Note: This equipment has been tested and found to comply with the limits for a Class B digital device, pursuant to Part 15 of the FCC rules. These limits are designed to provide reasonable protection against harmful interference in a residential installation. This equipment generates, uses and can radiate radio frequency energy and, if not installed and used in accordance with the instruction manual, may cause harmful interference to radio communications. However there is no guarantee that interference will not occur in a particular installation. If this equipment does cause harmful interference to radio or television reception, which can be determined by turning the equipment off and on, the user is encouraged to try to correct the interference by one or more of the following measures:

- Reorient or relocate the receiving antenna
- Increase the separation between the equipment and receiver
- Connect the equipment into an outlet on a circuit different from that to which the receiver is connected
- Consult the dealer or an experienced radio/TV technician for help.

Radio Frequency Interference Requirements – Canada

This Class B digital apparatus complies with Canadian ICES-003. Cet appareil numérique de la classe B est conforme à la norme NMB-003 du Canada.

Marking and European Economic Area (EEA)



Statement of Compliance
Zebra hereby declares that this device is in compliance with all the applicable Directives, 2004/108/EC, 2006/95/EC and 2011/65/EU. A Declaration of Conformity may be obtained from <http://www.zebra.com/doc>.

Ukraine

Дане обладнання відповідає вимогам технічного регламенту №1057, № 2008 на обмеження щодо використання деяких небезпечних речовин в електричних та електронних пристроях.

Laser Labels



In accordance with Clause 5, IEC 825 and EN60825, the following information is provided to the user:

ENGLISH CLASS 1 CLASS 2	CLASS 1 LASER PRODUCT LASER LIGHT DO NOT STARE INTO BEAM CLASS 2 LASER PRODUCT	HEBREW מוצר לייזר רמה 1 מוצר לייזר רמה 2 אזהרה: אל תבטו אל תוך הוורט	ITALIAN / ITALIANO PRODOTTO AL LASER DI CLASSE 1 LUCE LASER NON FISSARE IL RAGGIO/PRODOTTO AL LASER DI CLASSE 2	NORWEGIAN / NORSK KLASSE 1 LASERPRODUKT, KLASSE 1 KLASSE 2 LASERPRODUKT, KLASSE 2	PORTUGUESE / PORTUGUÊS CLASSE 1 PRODUTO LASER DA CLASSE 1 CLASSE 2 LUZ DE LASER NÃO FIXAR O RAIO LUMINOSO PRODUTO LASER DA CLASSE 2	SPANISH / ESPAÑOL PRODUCTO LASER DE LA CLASE 1 LUZ LASER NO MIRE FJAJAMENTE EL HAZ PRODUCTO LASER DE LA CLASE 2	GERMAN / DEUTSCH KLASSE 1 LASERPRODUKT DER KLASSE 1 KLASSE 2 LASERSTRAHLEN NICHT DIREKT IN DEN LASERSTRAHL SCHAUEN LASERPRODUKT DER KLASSE 2	SWEDISH / SVENSKA KLASS 1 LASERPRODUKT KLASS 1 KLASS 2 LASERLJUS STRÅRA INTE MOT STRÅLEN LASERPRODUKT KLASS 2	CHINESE / 简体中文 1类 1类激光产品 2类 2类激光产品	KOREAN / 한국어 1등급 레이저 제품 2등급 레이저 제품 이 광선을 주의하지 마십시오. 2등급 레이저 광선
--------------------------------------	-----------------------------------------------------------------------------------------	--------------------------------------------------------------------------------------	---------------------------------------------------------------------------------------------------------------------------------	------------------------------------------------------------------------------------------------	-----------------------------------------------------------------------------------------------------------------------------------------------------	------------------------------------------------------------------------------------------------------------------------------------	--------------------------------------------------------------------------------------------------------------------------------------------------------------------	-------------------------------------------------------------------------------------------------------------------------------	-------------------------------------------------	-----------------------------------------------------------------------------------

Laser Devices

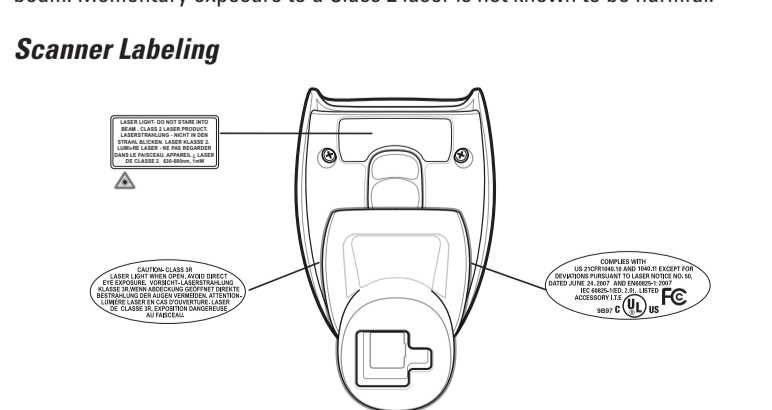
Zebra products using lasers comply with US 21CFR1040.10 and 1040.11 except for deviations pursuant to laser notice no. 50, dated June 24, 2007 and IEC 60825-1 (Ed. 2.0), EN60825-1:2007. The laser classification is marked on one of the labels on the product.

Class 1 laser devices are not considered to be hazardous when used for their intended purpose. The following statement is required to comply with US and international regulations:

Caution: Use of controls, adjustments or performance of procedures other than those specified herein may result in hazardous laser light exposure.

Class 2 laser scanners use a low power, visible light diode. As with any very bright light source, such as the sun, the user should avoid staring directly into the light beam. Momentary exposure to a Class 2 laser is not known to be harmful.

Scanner Labeling



Zebra Technologies Corporation
Lincolnshire, IL U.S.A.
<http://www.zebra.com>

Zebra and the Zebra head graphic are registered trademarks of ZIH Corp. The Symbol logo is a registered trademark of Symbol Technologies, Inc., a Zebra Technologies company.
© 2015 Symbol Technologies, Inc.



72-83973-02 Revision A March 2015



<http://www.zebra.com/ds6708>