

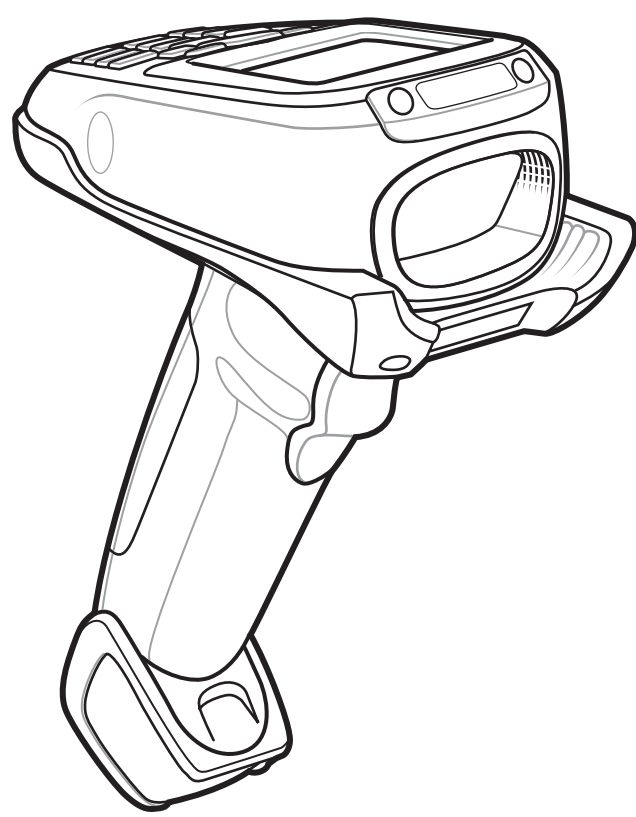
MT2000 Series

Quick Start Guide

<http://www.zebra.com/mt2000>

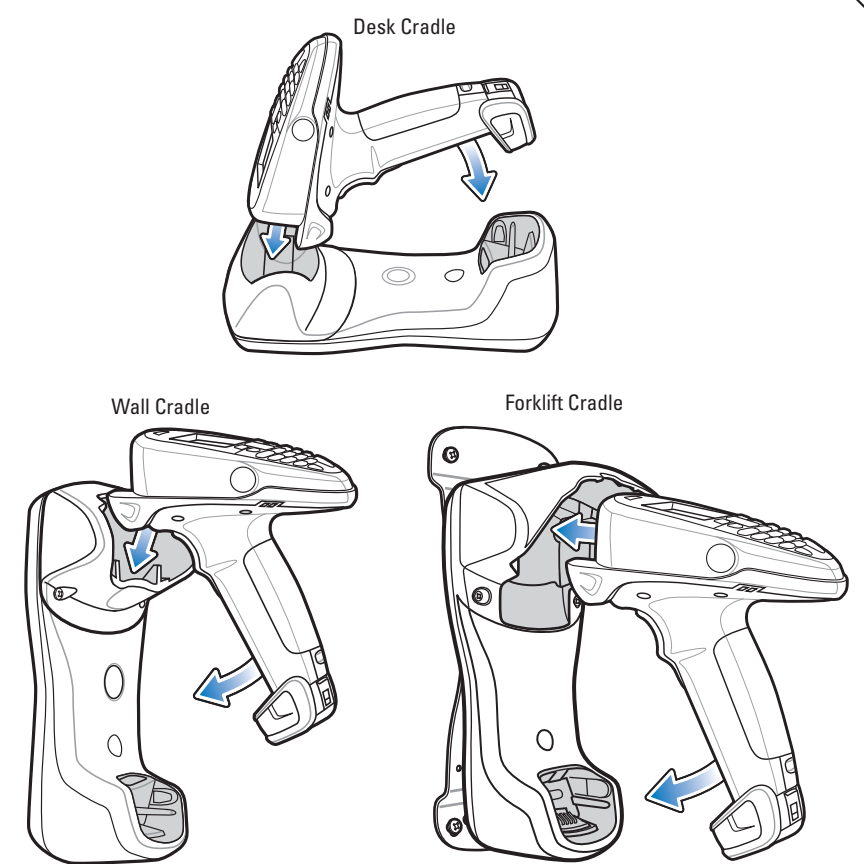
Refer to User Guide for detailed information

POST IN WORK AREA

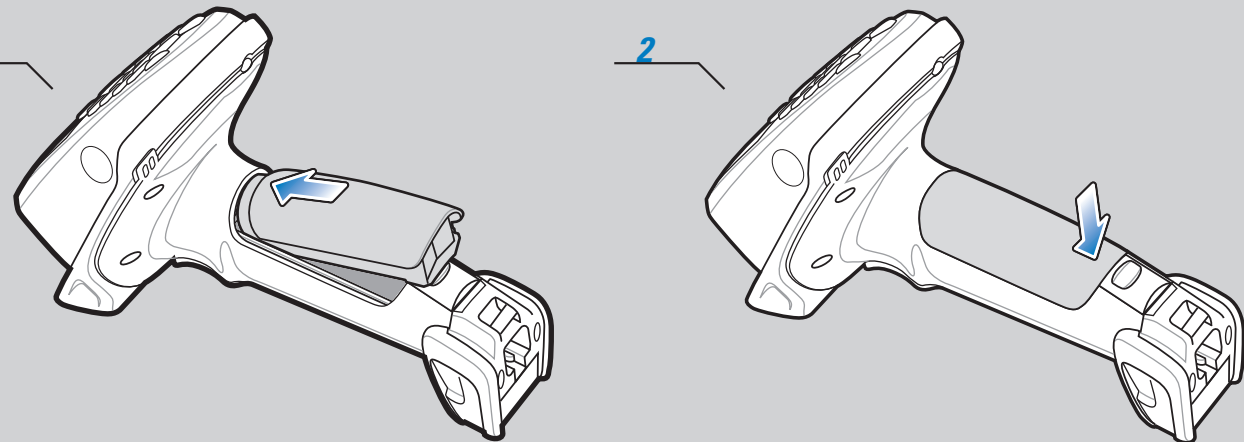


- 1 Left soft & ALT key
- 2 Tab & * key
- 3 Keypad
- 4 Orange key
- 5 Blue key
- 6 Battery
- 7 Tether Plate
- 8 LED Indicator
- 9 Scan Window
- 10 4-way Navigation key
- 11 Right soft & CTRL key
- 12 Cold boot trigger
- 13 LED Indicator (MT2090 Only)
- 14 Enter key
- 15 Scan Trigger

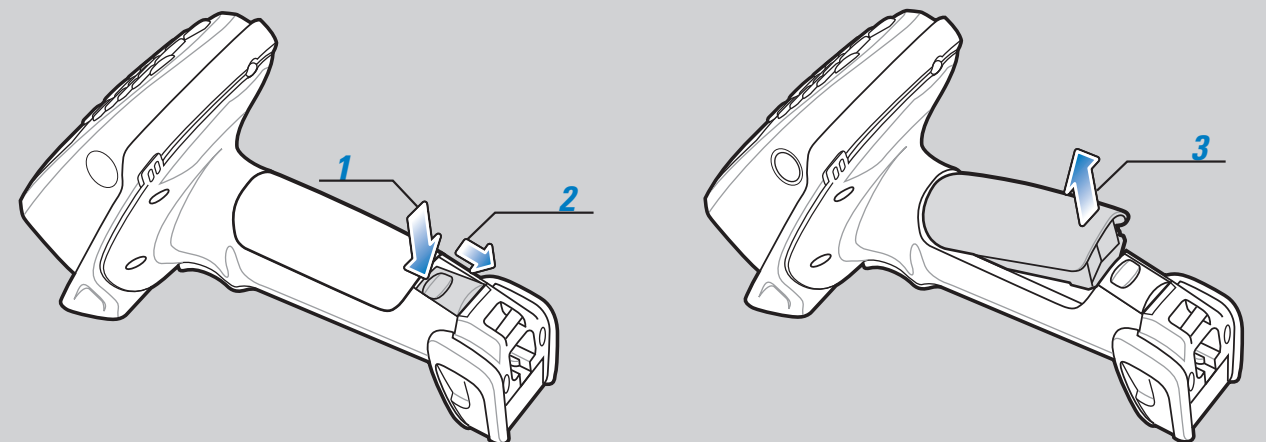
Insert Scanner in Cradle



BATTERY INSERTION

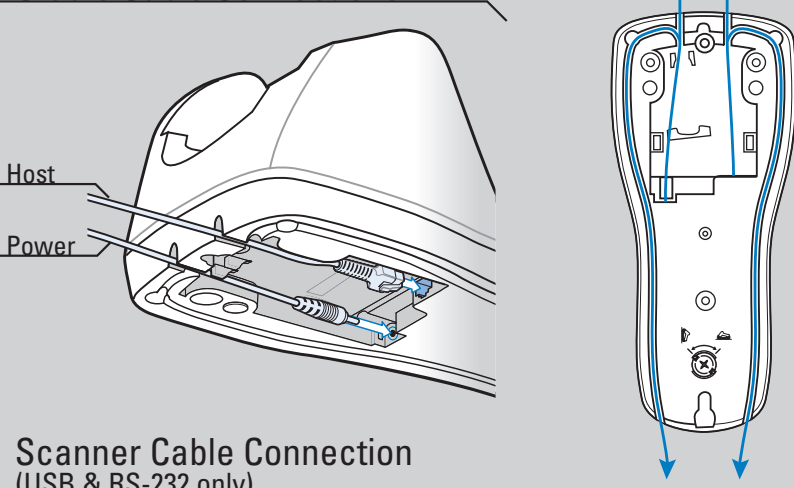


BATTERY REMOVAL

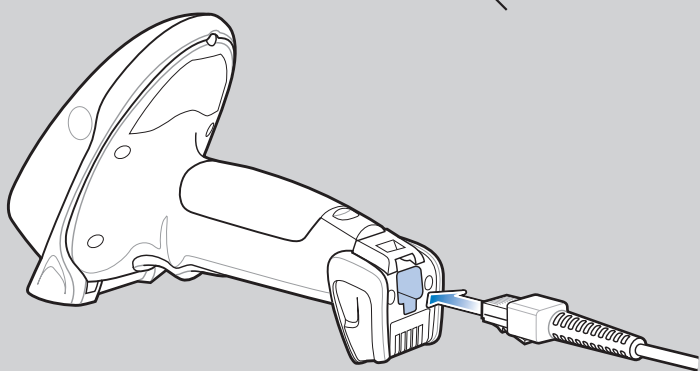


CONNECTIONS

Cradle Cable Connections

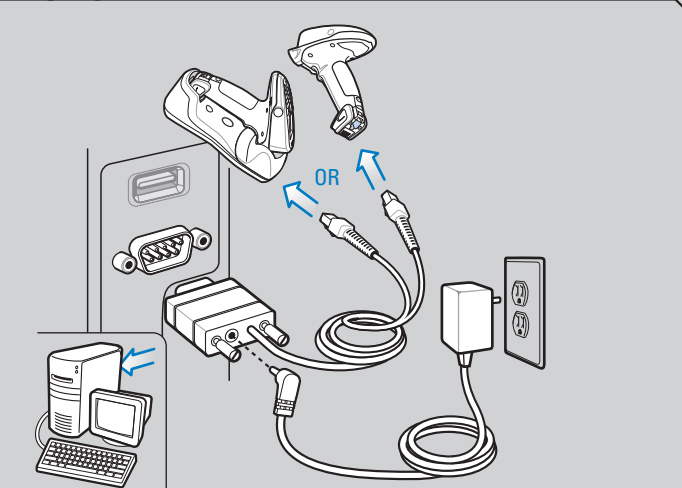


Scanner Cable Connection (USB & RS-232 only)

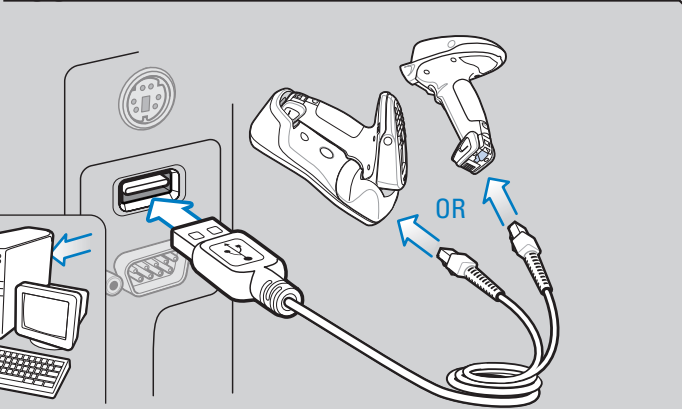


NOTE: Cables may vary depending on configuration. When using an external power supply, insert the power cable into the cradle first, then insert the host cable. Connect the power cable to an AC outlet last.

RS-232

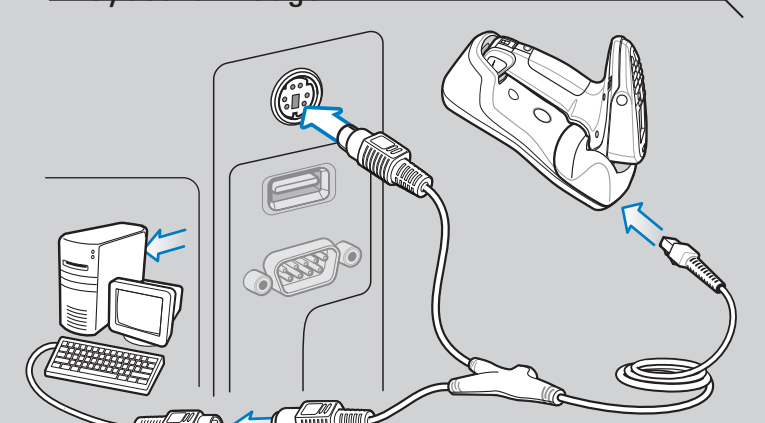


USB

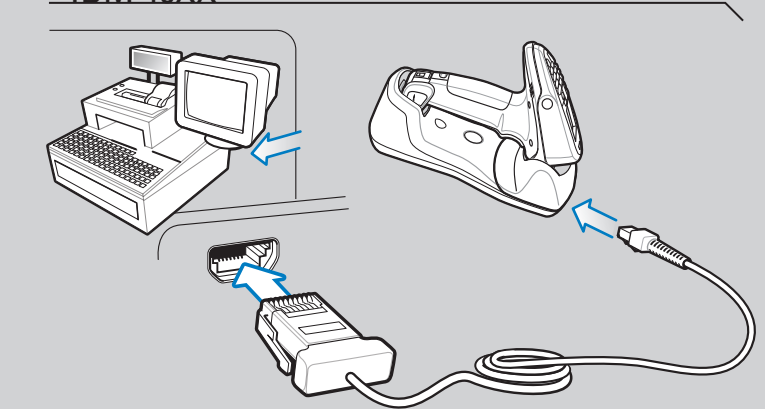


HOST INTERFACES

Keyboard Wedge



IBM 46XX



TROUBLESHOOTING

Refer to the MT2000 Series User Guide Troubleshooting section for further information.

Scanner not working

No power to scanner

Check battery

NOTE: Under certain circumstances, a fully discharged battery can take up to 30 minutes to charge before the scanner is operational. Refer to the User Guide for detailed information.

Scanner not decoding bar code

Scanner not programmed for bar code type

Ensure scanner is programmed to read type of bar code being scanned

Bar code unreadable

Ensure bar code is not defaced; try scanning test bar code of same bar code type

Scanning application is not running

From the Home screen display on the scanner, select Scan Item to run the scanning application

Scanner decoding bar code, but data not transmitting to host

Scanner not paired to host-connected cradle

Pair the scanner to the cradle (using the PAIR bar code on the cradle)

Cradle not programmed for correct host interface

Check scanner host parameters or edit options

Interface cable is loose

Check for loose cable connections

Scanned data incorrectly displayed on host

Paired cradle host communication parameters do not match the host's parameters

Check cradle host parameters or edit options

NOTE: If data is still not transmitting to host, it may be necessary to recycle power on the cradle.

MT2000 SERIES PROGRAMMING BAR CODES

Host Types

RS-232 Host Types



STANDARD RS-232



ICL RS-232



NIXDORF RS-232 MODE B



FUJITSU RS-232



NIXDORF RS-232 MODE A



OPOS/JPOS

USB Host Types



HID KEYBOARD EMULATION



IBM HAND-HELD USB



ACTIVESYNC HOST

Keyboard Wedge Host Types



IBM PC/AT and IBM PC COMPATIBLE

Radio Communications Host Types



CRADLE HOST



SERIAL PORT PROFILE (SLAVE)



BLUETOOTH KEYBOARD EMULATION (HID SLAVE)



SERIAL PORT PROFILE (MASTER)

IBM 46XX Host Types



PORT 5B



PORT 9B

Host Mode



CABLE PRIORITY



CABLE ONLY



WIRELESS ONLY

Miscellaneous

Restore Defaults

Note: Paired scanners disconnect from the cradle when Restore Defaults is scanned.



RESTORE DEFAULTS

Set Factory Defaults

Note: The Set Factory Defaults parameter only changes the scanner's programmable parameters to the factory defaults.



SET FACTORY DEFAULTS

Scan to Add an Enter Key (Carriage Return/Line Feed)



SCAN OPTIONS



<DATA><SUFFIX>



ENTER

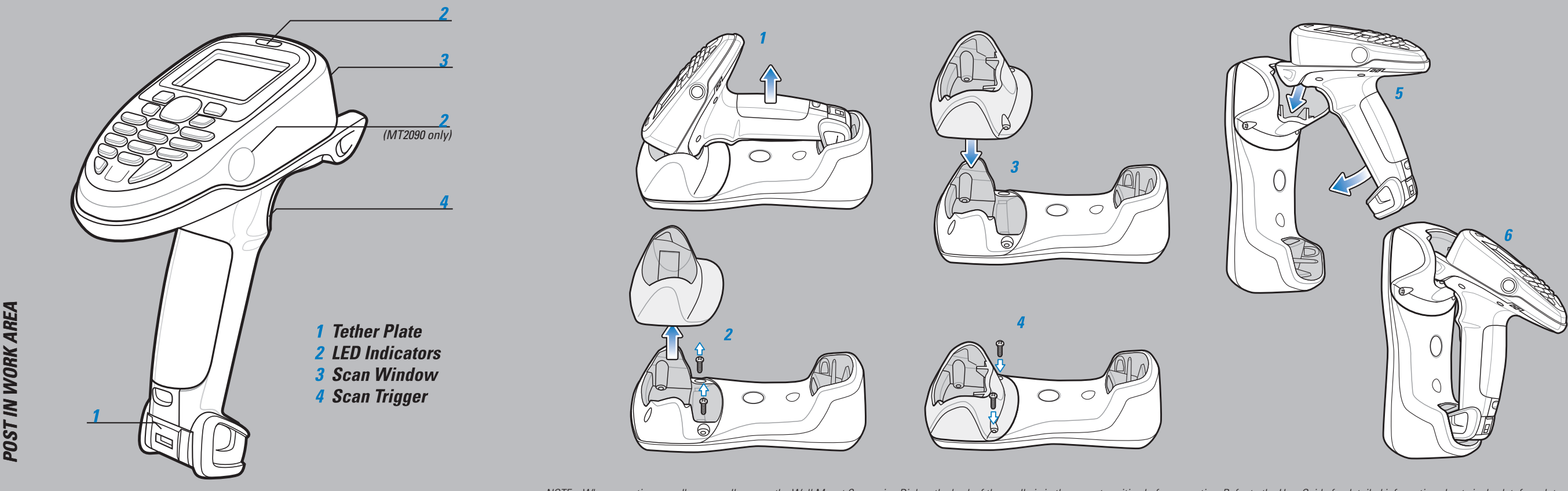
Unpairing/Disconnection



UNPAIR/DISCONNECT

MT2000 Series Quick Start Guide

DESK-TO-WALL MOUNT CRADLE CONVERSION

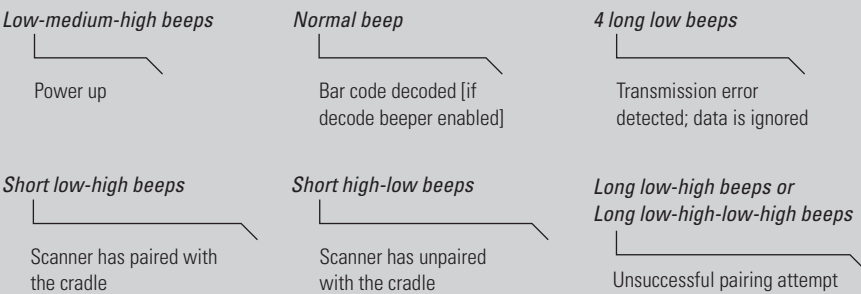


NOTE: When mounting a cradle on a wall, ensure the Wall Mount Conversion Dial on the back of the cradle is in the correct position before mounting. Refer to the User Guide for detailed information about single slot, four slot and forklift cradles.

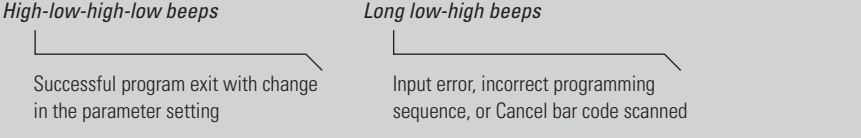
SCANNER INDICATIONS

Scanner Beeper Indications

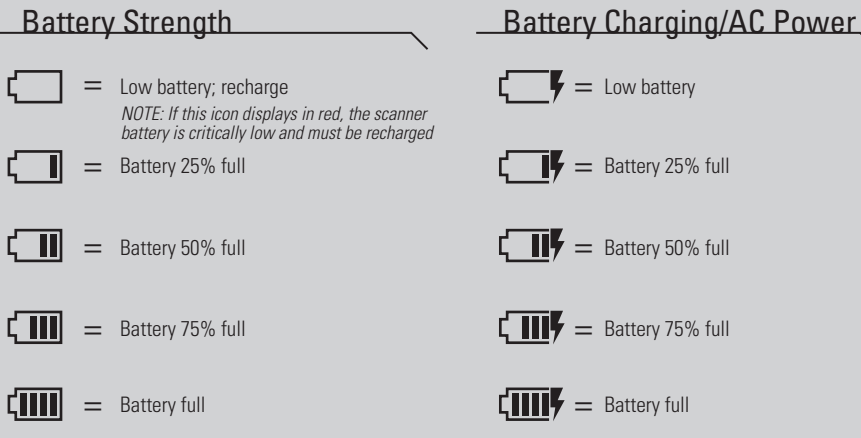
Standard Use



Parameter Menu Scanning

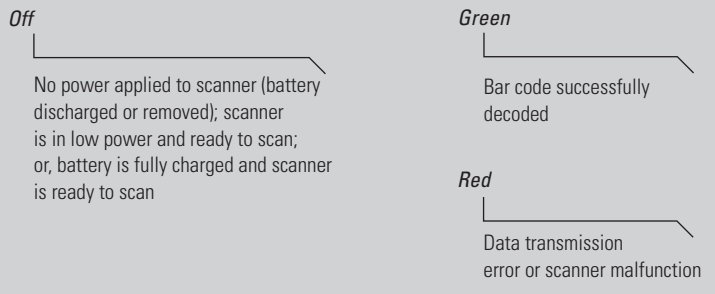


Scanner Display Indications

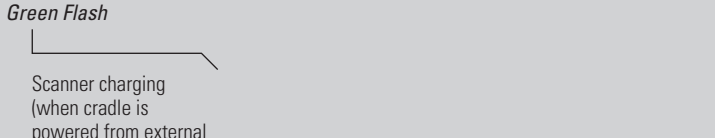


Scanner LED Indications

Standard Use



Charging Use



Waste Electrical and Electronic Equipment (WEEE)

English: For EU Customers All products at the end of their life must be returned to Zebra for recycling... Bulgarian: За всички от ЕС: Цял живот на продукта... Chinese: 本产品为符合欧盟环保法规... Czech: Pro zákazníky z EU: Všechny produkty... Danish: Til kunder i EU: Alle produkter skal returneres... Dutch: Voor klanten in de EU: Alle producten moeten... Finnish: Kaikki tuotteet, jotka ovat tarkoitettu... French: Clients de l'Union Européenne: Tous les produits... German: Für Kunden in der EU: Alle Produkte müssen... Greek: Για τους πελάτες στην Ευρώπη: Όλες οι συσκευές... Hebrew: ללקוחות מכל המדינות הנ"ל: כל המוצרים... Hungarian: Minden terméknek... Italian: Per clienti dell'UE: tutti i prodotti... Japanese: この装置は、情報処理装置等電波障害自主規制協議会... Korean: 이 장치는 정보통신부에서... Latvian: ES klientiem: visus produktus... Lithuanian: Šie produktai yra skirti... Maltese: Għa klijenti fl-UE: Il-prodotti kollha... Norwegian: Dette produktet er... Polish: Klienci z obszaru Unii Europejskiej... Portuguese: Para clientes da UE: todos os produtos... Romanian: Pentru clienții din UE: Toate produsele... Russian: Для клиентов из ЕС: Все продукты... Slovak: Pre zákazníkov z krajín EÚ: Všetky výrobky... Slovenian: Za kupce v EU: vsi izdelki... Spanish: Para clientes en la Unión Europea... Swedish: Alla produkter som... Turkish: AB Müşterileri için: Tüm ürünler... Ukrainian: Для клієнтів з ЄС: Всі продукти...

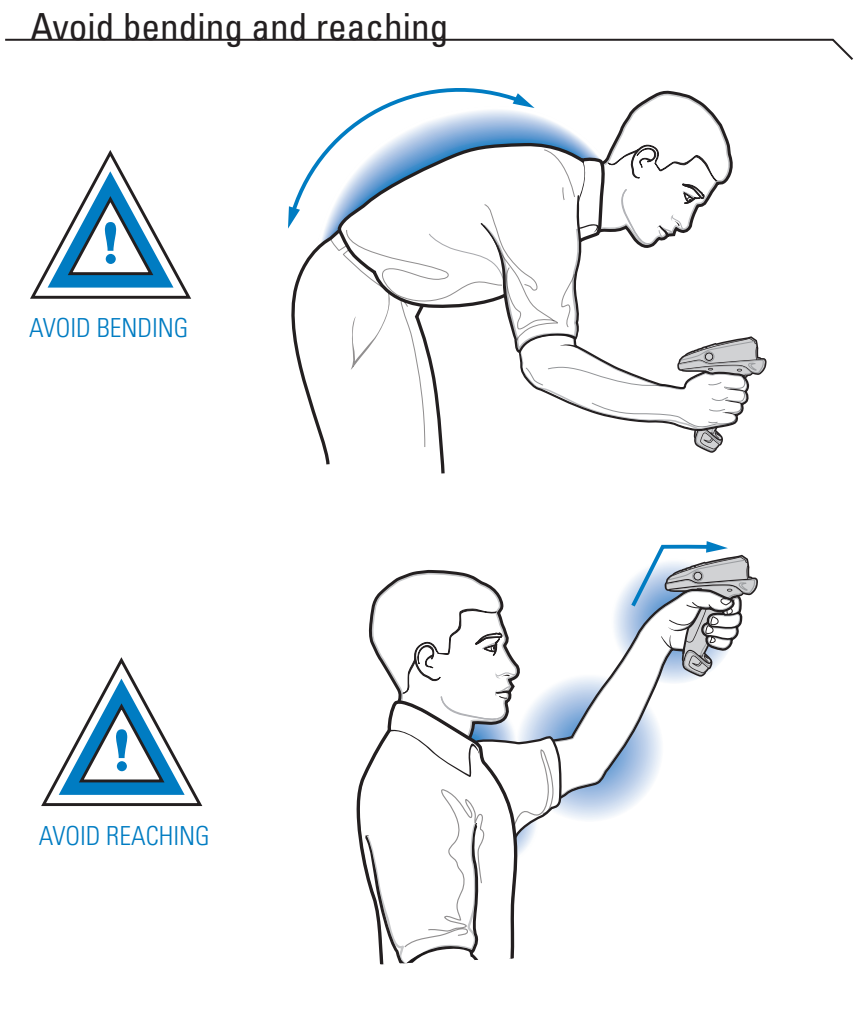
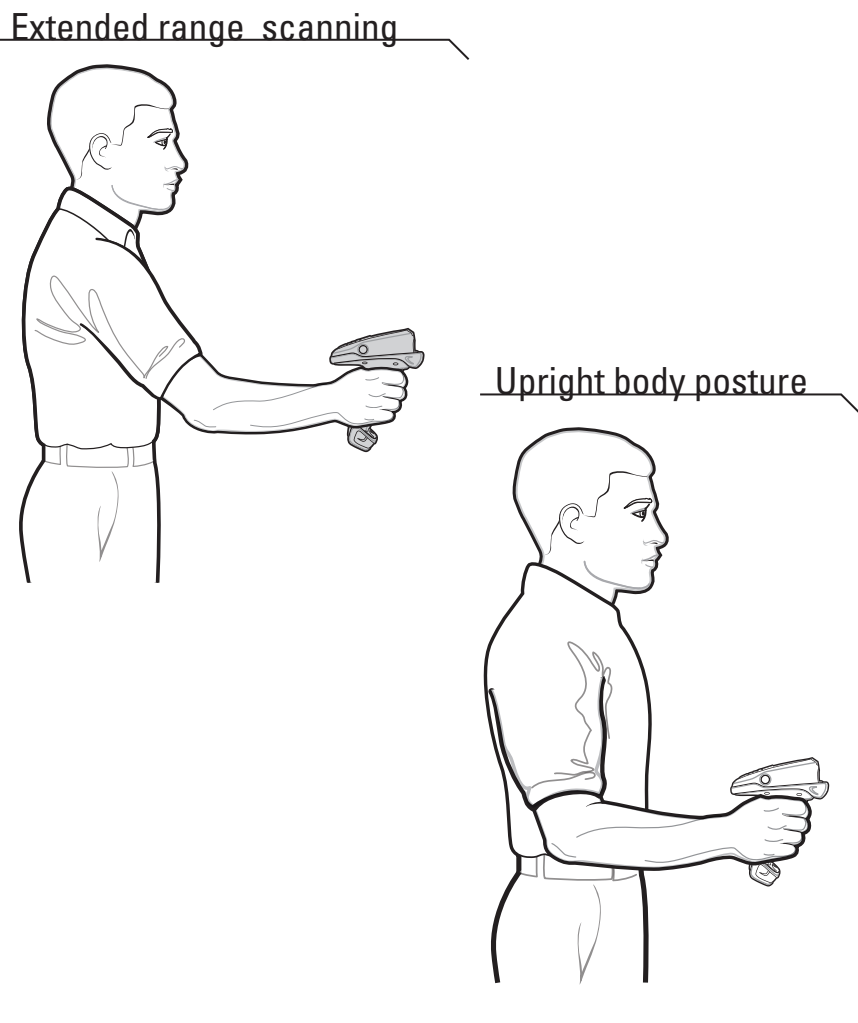
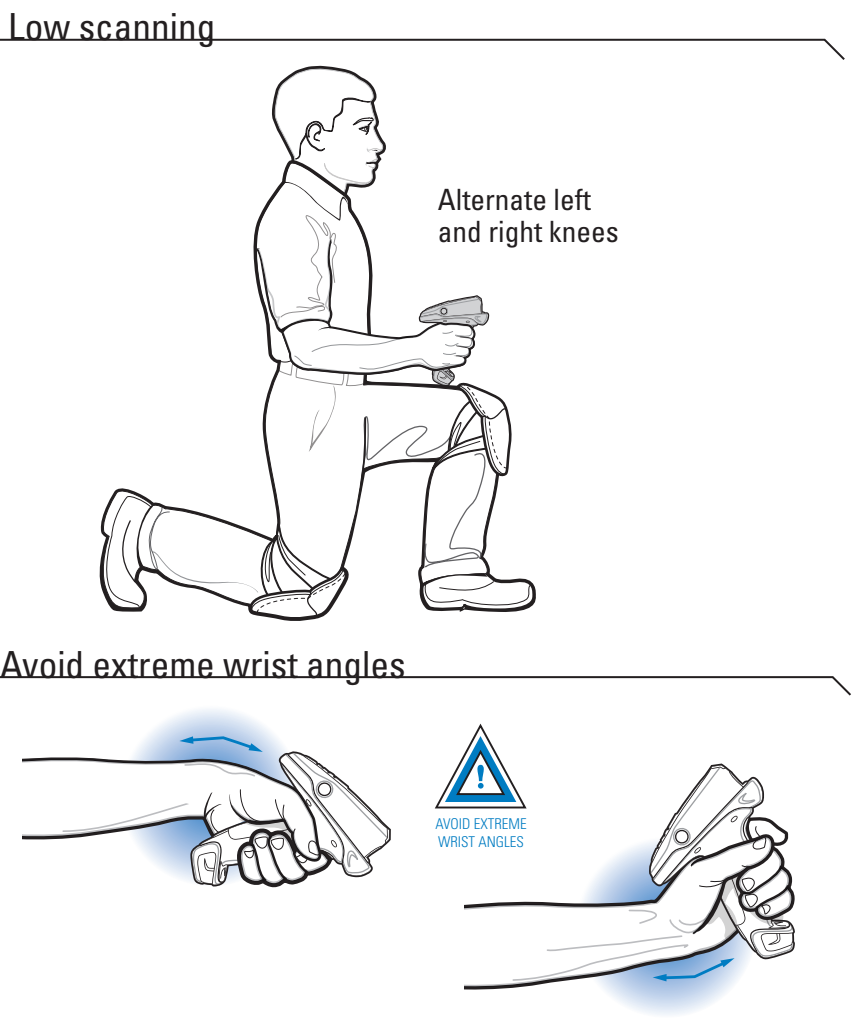
Software Support

Zebra wants to ensure that customers have the latest entitled software at the time of device* purchase in order to keep the device operating at peak performance levels. To confirm that your Zebra device* has the latest entitled software available at the time of purchase, visit: www.zebra.com/support. Check for the latest software from Support+ search for the device and select Support+ Software Downloads. If your device does not have the latest entitled software as of your device purchase date, e-mail Zebra at entitlementservices@zebra.com and ensure you include the following essential device information: Model number, Serial number, Proof of purchase, Title of the software download you are requesting. If it is determined by Zebra that your device is entitled to the latest version of software as of the date you purchased your device, you will receive an e-mail containing a link directing you to a Zebra Web site to download the appropriate software. * This applies to Zebra Mobile Computing devices and select Advanced Data Capture devices.

Ergonomic Recommendations

Caution: In order to avoid or minimize the potential risk of ergonomic injury follow the recommendations below. Consult with your local Health & Safety Manager to ensure that you are adhering to your company's safety programs to prevent employee injury. Reduce or eliminate repetitive motion, Maintain a natural position, Reduce or eliminate excessive force, Keep objects that are used frequently within easy reach, Perform tasks at correct heights, Reduce or eliminate vibration, Reduce or eliminate direct pressure, Provide adjustable workstations, Provide adequate clearance, Provide a suitable working environment, Improve work procedures.

RECOMMENDED USAGE GUIDE - OPTIMUM BODY POSTURE



MT2000 Series

REGULATORY INFORMATION

All Zebra devices are designed to be compliant with rules and regulations in locations they are sold and will be labeled as required. Local language translations are available at the following website: www.zebra.com/support. Any changes or modifications to Zebra equipment, not expressly approved by Zebra, could void the user's authority to operate the equipment.

CAUTION: Only use Zebra approved and UL Listed accessories, battery packs and battery chargers. Do NOT attempt to charge damp/wet mobile computers or batteries. All components must be dry before connecting to an external power source.

Wireless Device Country Approvals
Regulatory markings, subject to certification, are applied to the device signifying the radio(s) is/are approved for use in the following countries: United States, Canada, Japan, China, S. Korea, Australia, and Europe 1. Please refer to the Zebra Declaration of Conformity (DoC) for details of other country markings. This is available at <http://www.zebra.com/doc>.

Note 1: For 2.4GHz or 5.8GHz Products: Europe includes, Austria, Belgium, Bulgaria, Czech Republic, Cyprus, Denmark, Estonia, Finland, France, Germany, Greece, Hungary, Iceland, Ireland, Italy, Latvia, Liechtenstein, Lithuania, Luxembourg, Malta, Netherlands, Norway, Poland, Portugal, Romania, Slovak Republic, Slovenia, Spain, Sweden, Switzerland and the United Kingdom.

Operation of the device without regulatory approval is illegal.

Frequency of Operation – FCC and IC
5 GHz Only
The use in the UNII (Unlicensed National Information Infrastructure) band 1 5150-5250 MHz band is restricted to Indoor Use Only; any other use will make the operation of this device illegal.

2.4 GHz Only
The available channels for 802.11 b/g operation in the US are Channels 1 to 11. The range of channels is limited by firmware.

Health and Safety Recommendations

Warnings for Use of Wireless Devices
Please observe all warning notices with regard to the usage of wireless devices

Safety in Hospitals
Wireless devices transmit radio frequency energy and may affect medical electrical equipment. Wireless devices should be switched off wherever you are requested to do so in hospitals, clinics or health care facilities. These requests are designed to prevent possible interference with sensitive medical equipment.

Pacemakers
Pacemaker manufacturers recommend that a minimum of 15cm (6 inches) be maintained between a handheld wireless device and a pacemaker to avoid potential interference with the pacemaker. These recommendations are consistent with independent research and recommendations by Wireless Technology Research.

Persons with Pacemakers:

- Should ALWAYS keep the device more than 15cm (6 inches) from their pacemaker when turned ON.
- Should not carry the device in a breast pocket.
- Should use the ear furthest from the pacemaker to minimize the potential for interference
- If you have any reason to suspect that interference is taking place, turn OFF your device.

Other Medical Devices
Please consult your physician or the manufacturer of the medical device, to determine if the operation of your wireless product may interfere with the medical device.

Safety Information Exposure Guidelines
Reducing RF Exposure – Use Properly
Only operate the device in accordance with the instructions supplied.

International
The device complies with internationally recognized standards covering human exposure to electromagnetic fields from radio devices.

EU
Handheld Devices
To comply with EU RF exposure requirements, this device must be operated in the hand with a minimum separation distance of 20 cm or more from a person's body. Other operating configurations should be avoided. For information on "International" human exposure to electromagnetic fields refer to the Zebra Declaration of Conformity (DoC) at <http://www.zebra.com/doc>.

US and Canada
Handheld Devices
To comply with FCC RF exposure requirements, this device must be operated in the hand with a minimum separation distance of 20 cm or more from a person's body. Other operating configurations should be avoided.

Ukraine: This equipment conforms to requirements of the Technical Regulation No. 1057, 2008 on restrictions as to the use of some dangerous substances in electric and electronic devices.

For Australia Only:
For Australia Only, this warranty is given by Zebra Technologies Asia Pacific Pte. Ltd., 71 Robinson Road, #05-02/03, Singapore 068895, Singapore. Our goods come with guarantees that cannot be excluded under the Australia Consumer Law. You are entitled to a replacement or refund for a major failure and compensation for any other reasonably foreseeable loss or damage. You are also entitled to the goods repaired or replaced if the goods fail to be of acceptable quality and the failure does not amount to a major failure. Zebra Technologies Corporation Australia's limited warranty above is in addition to any rights and remedies you may have under the Australian Consumer Law. If you have any queries, please call Zebra Technologies Corporation at +65 6856 0722. You may also visit our website: <http://www.zebra.com/doc>

Batteries
Charging
To charge the device battery, the battery and charger temperatures must be between +32°F and +104°F (0°C and +40°C). Please follow the local regulations when disposing of re-chargeable batteries.

Taiwan - Recycling 「廢電池請回收」
EPA (Environmental Protection Administration) requires dry battery producing or importing firms in accordance with Article 15 of the Waste Disposal Act are required to include the recycling marks on the batteries used in sales, giveaway or promotion. Contact a qualified Taiwanese recycler for proper battery disposal.

Battery Information
Zebra rechargeable battery packs are designed and constructed to the highest standards within the industry. However, there are limitations to how long a battery can operate or be stored before needing replacement. Many factors affect the actual life cycle of a battery pack, such as heat, cold, harsh environmental conditions and severe drops. When batteries are stored over six (6) months, some irreversible deterioration in overall battery quality may occur. Store batteries at half of full charge in a dry, cool place, removed from the equipment to prevent loss of capacity, rusting of metallic parts and electrolyte leakage. When storing batteries for one year or longer, the charge level should be verified at least once a year and charged to half of full charge. Replace the battery when a significant loss of run time is detected. Standard warranty period for all Zebra batteries is 30 days, regardless if the battery was purchased separately or included as part of the mobile computer or bar code scanner. For more information on batteries, visit: <http://www.zebra.com/batterybasics>

Battery Safety Guidelines

- The area in which the units are charged should be clear of debris and combustible materials or chemicals.
- Particular care should be taken where the device is charged in a non commercial environment.
- Follow battery usage, storage, and charging guidelines found in the user's guide.
- Improper battery use may result in a fire, explosion, or other hazard.
- To charge the mobile device battery, the battery and charger temperatures must be between -32°F and +104°F (0°C and +40°C)
- Do not use incompatible batteries and chargers. Use of an incompatible battery or charger may present a risk of fire, explosion, leakage, or other hazard. If you have any questions about the compatibility of a battery or a charger, contact Zebra support.
- For devices that utilize a USB port as a charging source, the device shall only be connected to products that bear the USB-IF logo or have the corresponding USB-IF compliance program.
- Do not disassemble or open, crush, bend or deform, puncture, or shred.
- Severe impact from dropping any battery-operated device on a hard surface could cause the battery to overheat.
- Do not short circuit a battery or allow metallic or conductive objects to contact the battery terminals.
- In the event of a battery leak, do not allow the liquid to come in contact with the skin or eyes. If contact has been made, wash the affected area with large amounts of water and seek medical advice.
- If you suspect damage to your equipment or battery, contact Zebra support to arrange for inspection.

Radio Frequency Interference Requirements- FCC
This device complies with Part 15 of the FCC Rules. Operation is subject to the following two conditions: (1) This device may not cause harmful interference and (2) this device must accept any interference received, including interference that may cause undesired operation.

FC Tested to comply with FCC Standards FOR HOME OFFICE USE

Note: This equipment has been tested and found to comply with the limits for a Class B digital device, pursuant to Part 15 of the FCC rules. These limits are designed to provide reasonable protection against harmful interference in a residential installation. This equipment generates, uses and can radiate radio frequency energy and, if not installed and used in accordance with the instructions, may cause harmful interference to radio communications. However there is no guarantee that interference will not occur in a particular installation. If this equipment does cause harmful interference to radio or television reception, which can be determined by turning the equipment off and on, the user is encouraged to try to correct the interference by one or more of the following measures:

- Reorient or relocate the receiving antenna
- Increase the separation between the equipment and receiver
- Connect the equipment into an outlet on a circuit different from that to which the receiver is connected
- Consult the dealer or an experienced radio/TV technician for help.

Radio Transmitters (Part 15)
This device complies with Part 15 of the FCC Rules. Operation is subject to the following two conditions: (1) This device may not cause harmful interference, and (2) this device must accept any interference received, including interference that may cause undesired operation.

Radio Frequency Interference Requirements- Canada
This Class B digital apparatus complies with Canadian ICES-003. Cet appareil numérique de la classe B est conforme à la norme NMB-003 du Canada.

Radio Transmitters
For IRLAN Devices:
The use of 5GHz RLAN's, for use in Canada, have the following restrictions:
• Restricted Band 5.60 – 5.65 GHz
This device complies with RSS 210 of Industry & Science Canada. Operation is subject to the following two conditions: (1) This device may not cause harmful interference and (2) this device must accept any interference received, including interference that may cause undesired operation.

Label Marking: The Term "IC" before the radio certification only signifies that Industry Canada technical specifications were met.

Statement of Compliance
Zebra hereby declares that this radio equipment is in compliance with Directive 2011/65/EU and 1999/5/EC or 2014/53/EU (2014/53/EU supersedes 1999/5/EC from 13th June 2017). The full text of the EU Declaration of Conformity is available at the following internet address: <http://www.zebra.com/doc>

Japan (VCCI) - Voluntary Control Council for Interference
この装置は、情報処理装置等電波障害自主規制協議会（VCCI）の基準に基づいた技術装置です。この装置は、家庭環境で使用することを目的としていますが、この装置がラジオやテレビジョン受信機に近接して使用されると、受信障害を引き起こすことがあります。取扱説明書に従って正しい取り扱いをして下さい。
This is a Class B product based on the standard of the Voluntary Control Council for Interference from Information Technology Equipment (VCCI). If this is used near a radio or television receiver in a domestic environment, it may cause radio interference. Install and use the equipment according to the instruction manual

Other Countries

Brazil
Declarações Regulamentares para MT2000 - Brasil
Nota: A marca de certificação se aplica ao Transceptor, modelo MT2000. Este equipamento opera em caráter secundário, isto é, não tem direito a proteção contra interferência prejudicial, mesmo de estações do mesmo tipo, e não pode causar interferência a sistemas operando em caráter primário.
Para maiores informações sobre ANATEL, consulte o site: <http://www.anatel.gov.br>

Mexico - Restrict Frequency Range to: 2.450 – 2.4835 GHz.
Sri Lanka - Restrict Frequency Range to: 2.400 – 2.430 GHz.

Eurasian Customs Union
Евразийский Таможенный Союз
Данный продукт соответствует требованиям знака EAC.

Taiwan - 臺灣
低功率電波射性電機管理辦法
第十二條
經型式認證合格之低功率射頻電機，非經許可，公司、商號或使用者均不得擅自變更頻率、加大功率或變更原設計之特性及功能。
低功率射頻電機之使用不得影響飛航安全及干擾合法通信；經發現有干擾現象時，應立即停用，並改善至無干擾時方得繼續使用。
前項合法通信，指依電信管理作業之無線電通信。
低功率射頻電機須忍受合法通信或工業、科學及醫療用電波射性電機設備之干擾。
限制頻率範圍是： 2.400 - 2.4835 GHz, 5.250 - 5.850 GHz, 6.725 - 6.850 GHz, 2.4GHz: 11頻道, 5GHz: 8頻道
在 5.25-5.35 兆赫頻帶內操作之無線通訊傳輸設備，限於室內使用。

Laser Labels
In accordance with Clause 5, IEC 825 and EN60825, the following information is provided to the user

ENGLISH CLASS 2 LASER PRODUCT CLASS 2 LASER LIGHT DO NOT STARE INTO BEAM CLASS 2 LASER PRODUCT	GERMAN / DEUTSCH KLASSE 2 LASERPRODUKT KLASSE 2 LASERSTRAHLEN NICHT DIREKT IN DEN LASERSTRAHLEN SCHAUEN LASERPRODUKT DER KLASSE 2	PORTUGUESE / PORTUGUÊS CLASSE 2 LASER DA CLASSE 2 CLASSE 2 LASER NÃO MIRE O FEIXE DO LASER PRODUTO LASER DA CLASSE 2	SPANISH / ESPAÑOL CLASE 2 PRODUCTO LASER DE LA CLASE 2 CLASE 2 LASER NO MIRE EL ALMOZAR DEL LAZ PRODUCTO LASER DE LA CLASE 2	SWEDISH / SVENSKA KLASS 2 LASERPRODUKT KLASS 1 KLASS 2 LASERSTRÅLE LASERPRODUKT KLASS 2	CHINESE / 简体中文 1类 2类 2类激光产品 激光产品	KOREAN 레이저 안전 이 레이저를 주시하지 마십시오. 2등급 레이저 안전
--	--	--	--	--	--	---

Laser Devices
Complies with 21CFR1040.10 & 1040.11 except for deviations pursuant to Laser Notice NO. 50, dated June 24, 2007 and IEC/EN 60825-1:2007 and/or IEC/EN 60825-1:2014.

The laser classification is marked on one of the labels on the device.
Class 1 Laser devices are not considered to be hazardous when used for their intended purpose. The following statement is required to comply with US and international regulations:
Caution: Use of controls, adjustments or performance of procedures other than those specified herein may result in hazardous laser light exposure.
Class 2 laser systems use a low power, visible light diode. As with any very bright light source, such as the sun, the user should avoid staring directly into the light beam. Momentary exposure to a Class 2 laser is not known to be harmful.

CAUTION: CLASS 2 LASER LIGHT WHEN OPEN. DO NOT STARE INTO THE BEAM AT ANY TIME.
EN CAS D'OUVERTURE, NE PAS REGARDER DANS LE FAISCEAU LASER. NE PAS REGARDER DANS LE FAISCEAU LASER. NE PAS REGARDER DANS LE FAISCEAU LASER. NE PAS REGARDER DANS LE FAISCEAU LASER.
NICHT IN DEN STRAHL BLIKKEN.
注意：打开时及取镜时直视激光射勿直视光束

LASER LIGHT - DO NOT STARE INTO BEAM
CLASS 2 LASER PRODUCT - LASER LIGHT - NECHT IN DEN STRAHL BLIKKEN
LASER LIGHT - DO NOT STARE INTO BEAM
CLASS 2 LASER PRODUCT - LASER LIGHT - NECHT IN DEN STRAHL BLIKKEN
LASER LIGHT - DO NOT STARE INTO BEAM
CLASS 2 LASER PRODUCT - LASER LIGHT - NECHT IN DEN STRAHL BLIKKEN
激光射勿直视光束

MT2000 Series

<http://www.zebra.com/mt2000>