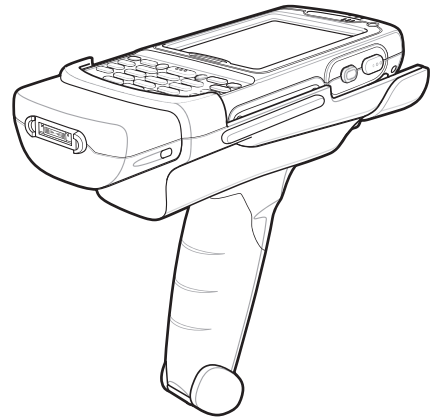


**TRG7000**  
Trigger Handle  
Quick Reference Guide

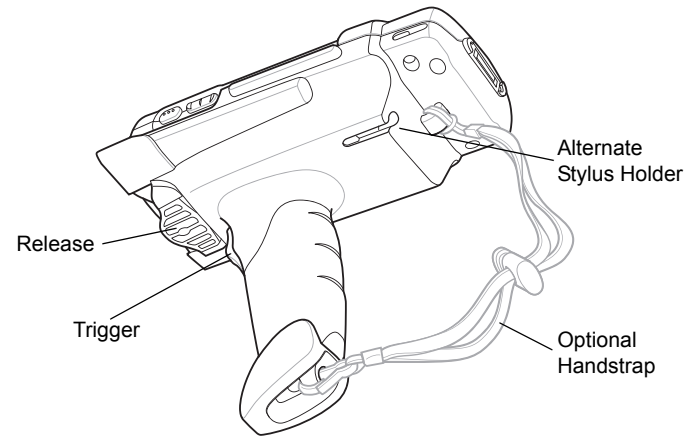


**Introduction**

The TRG7000 Trigger Handle (P/N: 21-70982-01) adds a gun-style handle with a scanning trigger to the MC70 and MC75 Enterprise Digital Assistants (EDAs). It increases comfort when using the EDA in scan-intensive applications for extended periods of time.

The TRG7000 is intended for use with MC70 WLAN/PAN configurations and all MC75 configurations.

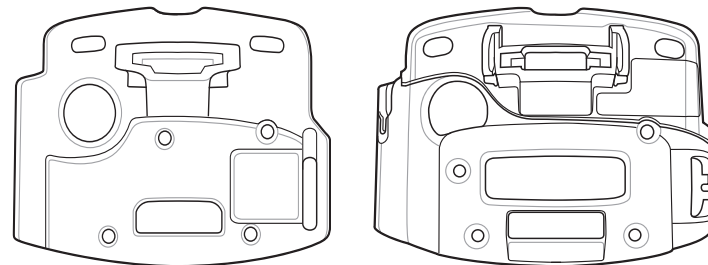
For detailed information on the MC7X EDA, refer to the *MC70 or MC75 User Guide*.



**Installing the Trigger Handle Cleat**

The Trigger Handle comes with two trigger handle cleats that replace the back housing bracket on the MC7X.

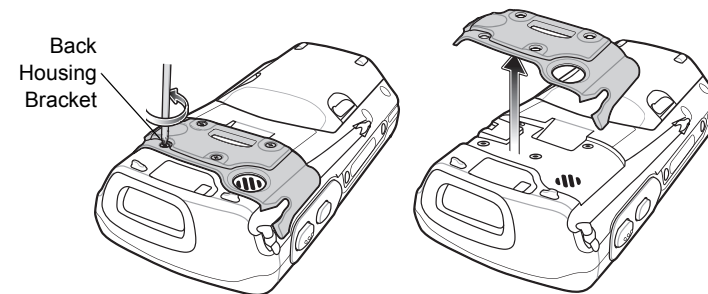
**CAUTION** The trigger handle cleat secures the MC7X into the Trigger Handle and prevents the MC7X from slipping out of the Trigger Handle. Failure to install the cleat may result in damage to the MC7X.



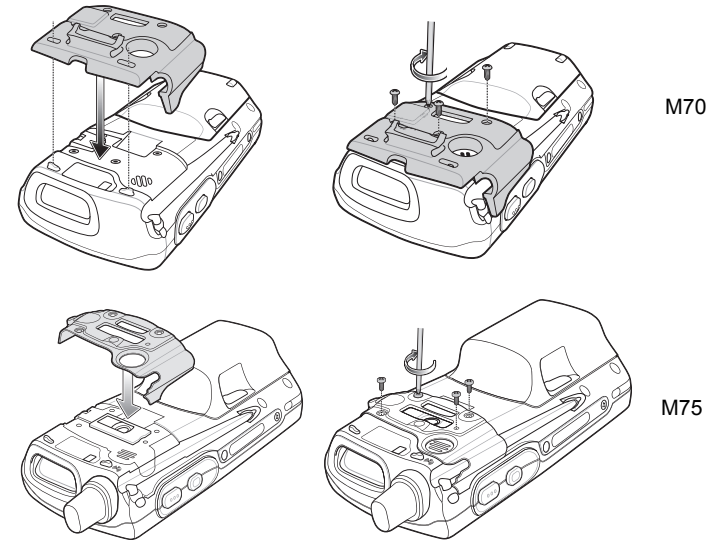
MC70 Cleat

MC75 Cleat

1. Remove the handstrap by threading the handstrap through the handstrap slot.
2. Remove the four screws securing the back housing bracket to the MC7X. Save these screws. You will use them later to secure the trigger handle cleat.
3. Remove the back housing bracket.



4. Install the rubber headset jack dust cover onto the trigger handle cleat.
5. Align the trigger handle cleat onto the MC7X.
6. Secure the trigger handle cleat to the MC7X using the four screws saved during step 2.



M70

M75

7. Feed the handstrap through the handstrap slot and secure.

**Install Trigger Settings Applet on MC75**

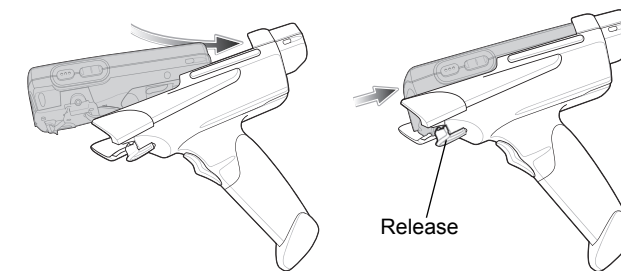
In order to use the Trigger Handle with the MC75, software installation is required. Download the *MC75Bunnings812702.Cab* file from the Zebra web site. Follow the directions provided with the software and install the file onto the device using ActiveSync. Refer to the MC75 Integrator Guide for instruction on installing software.

Once the software is installed, tap **Start > Settings > System > Trigger Settings** icon.

Select **TriggerOn** radio button and then tap **ok** to enable the Trigger Handle support feature.

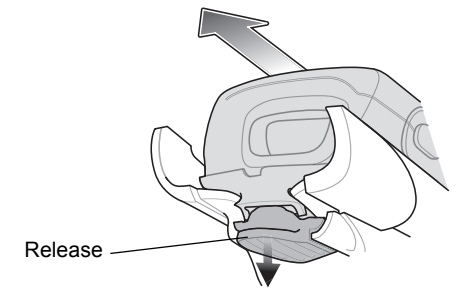
**Inserting the MC7X into the Trigger Handle**

Slide the MC7X into the Trigger Handle until it locks in place. The release secures the MC7X to the Trigger Handle.



**Removing the MC7X**

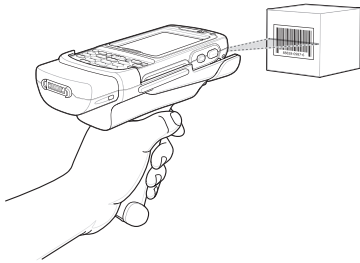
To remove the MC7X, press the release down and pull the MC7X forward.



**Scanning**

To scan bar codes:

1. Start the MC7X's scanning application.
2. Aim the MC7X at the bar code.
3. Pull the trigger on the handle. The Scan/Decode LED lights and a beep sounds to indicate a successful decode.



For more information on MC7X scanner functions, refer to the *MC70 or MC75 User Guide*.

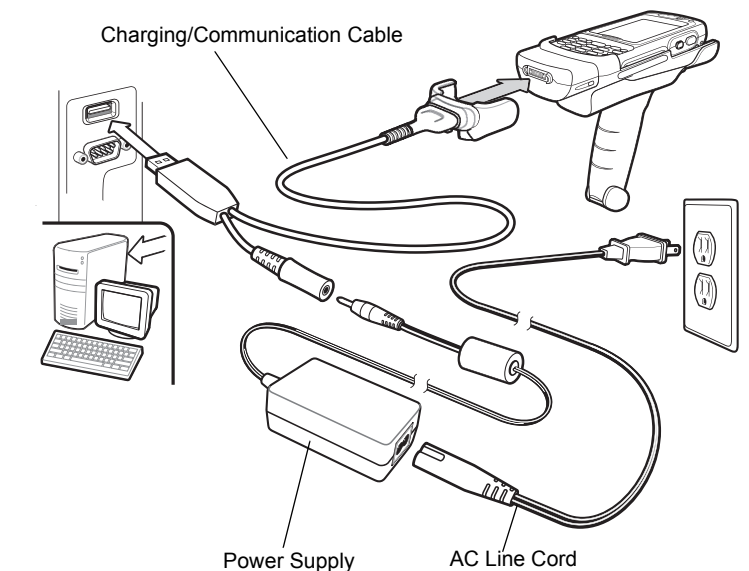
**Charging and Communication**

The Trigger Handle can be used to charge the MC7X and communicate with a host computer using either the Serial Charging Cable or a cradle, or connect to a peripheral such as a printer.

On the MC75, disable Trigger settings prior to performing communication using ActiveSync. Tap **Start > Setting > System > Trigger Settings** icon. Select **TriggerOff** radio button and then tap **ok**.

**Using the Serial Charging/Communication Cable**

To charge the MC70's battery or communicate with a host computer while the MC70 is in the Trigger Handle, use the Serial Charging Cable setup below:



Zebra reserves the right to make changes to any product to improve reliability, function, or design.

Zebra does not assume any product liability arising out of, or in connection with, the application or use of any product, circuit, or application described herein.

No license is granted, either expressly or by implication, estoppel, or otherwise under any patent right or patent, covering or relating to any combination, system, apparatus, machine, material, method, or process in which Zebra products might be used. An implied license exists only for equipment, circuits, and subsystems contained in Zebra products.

**Warranty**

For the complete Zebra hardware product warranty statement, go to: <http://www.zebra.com/warranty>.



Zebra Technologies Corporation  
Lincolnshire, IL, USA  
<http://www.zebra.com>

Zebra and the Zebra head graphic are registered trademarks of ZIH Corp. The Symbol logo is a registered trademark of Symbol Technologies, Inc., a Zebra Technologies company.  
© 2015 Symbol Technologies, Inc.

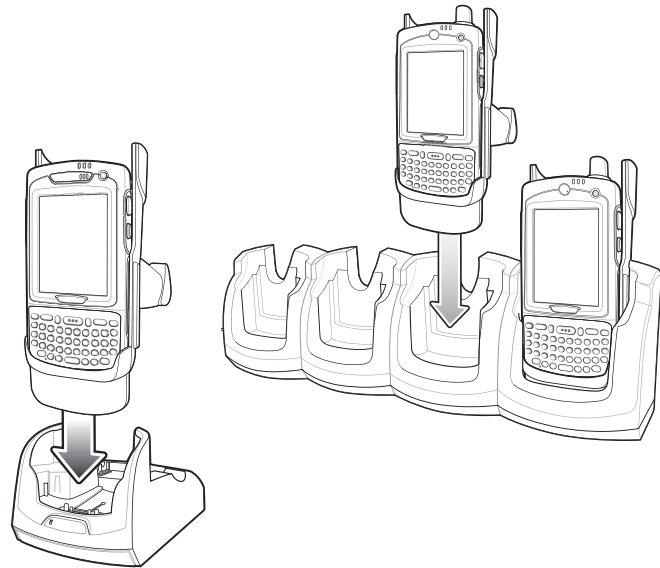


## Using a Cradle



**CAUTION** Do not place a Trigger Handle with an attachment, such as a Magnetic Stripe Reader (MSR) into a cradle. Remove the attachment before inserting the Trigger Handle into the cradle.

To charge the MC7X's battery while the MC7X is in the Trigger Handle, use either the Single-Slot Serial/USB cradle or the Four-Slot Ethernet cradle.



## Troubleshooting

Problem	Cause	Solution
Scan line does not appear when trigger is pressed.	MC7X is not attached properly to the Trigger Handle and is not making contact with the connector.	Remove the MC70 from the Trigger Handle and reinsert.
	MC7X does not contain a scanning application.	Load a scanning application on the MC7X. Refer to the <i>MC70</i> or <i>MC75 Integrator Guide</i> .
	Scanning application is not active.	Start the scanning application.
MC75 Trigger Setting not installed or set properly.		See Install Trigger Settings Applet on MC75 for instructions on installing the applet.  Tap <b>Start &gt; Settings &gt; System &gt; Trigger Settings</b> icon. Select <b>TriggerOn</b> radio button.
	MC7X battery does not charge when Trigger Handle is placed in a cradle.	Remove the Trigger Handle from the cradle and reinsert.  Power is not available to the cradle. Ensure that power connections to the cradle are connected properly.

Problem	Cause	Solution
Cannot print to printer.	Printer cable not connected properly.	Ensure cable is connected properly to the printer and Trigger Handle.
MC7X does not wake from suspend mode when trigger is pressed.	The trigger only wakes the MC7X from the suspend mode if a scanning application is active.	Press a key on the MC7X to wake from the suspend mode.

Refer to the *MC70* or *MC75 User Guide* for specific troubleshooting procedures.

## Ergonomic Recommendations



**CAUTION** In order to avoid or minimize the potential risk of ergonomic injury follow the recommendations below. Consult with your local Health & Safety Manager to ensure that you are adhering to your company's safety programs to prevent employee injury.

- Reduce or eliminate repetitive motion
- Maintain a natural position
- Reduce or eliminate excessive force
- Keep objects that are used frequently within easy reach
- Perform tasks at correct heights
- Reduce or eliminate vibration
- Reduce or eliminate direct pressure
- Provide adjustable workstations
- Provide adequate clearance
- Provide a suitable working environment
- Improve work procedures.

## Regulatory Information

All Zebra devices are designed to be compliant with rules and regulations in locations they are sold and will be labeled as required.

Any changes or modifications to Zebra equipment, not expressly approved by Zebra, could void the user's authority to operate the equipment.



**CAUTION** Only use Zebra approved and UL Listed mobile computers, accessories, battery packs and battery chargers. Do NOT attempt to charge damp/wet mobile computers or batteries. All components must be dry before connecting to an external power source.

Local language translations are available at the following website: <http://www.zebra.com/support>.

## Battery Charging

To charge the battery for the mobile device, battery and charger temperatures must be between +32° F and +104° F (0° C and +40° C).

## Radio Frequency Interference Requirements - FCC



**NOTE** This equipment has been tested and found to comply with the limits for a Class B digital device, pursuant to Part 15 of the FCC rules. These limits

are designed to provide reasonable protection against harmful interference in a residential installation. This equipment generates, uses and can radiate radio frequency energy and, if not installed and used in accordance with the instructions, may cause harmful interference to radio communications. However there is no guarantee that interference will not occur in a particular installation. If this equipment does cause harmful interference to radio or television reception, which can be determined by turning the equipment off and on, the user is encouraged to try to correct the interference by one or more of the following measures:

- Reorient or relocate the receiving antenna
- Increase the separation between the equipment and receiver
- Connect the equipment into an outlet on a circuit different from that to which the receiver is connected
- Consult the dealer or an experienced radio/TV technician for help.

## Radio Frequency Interference Requirements - Canada

This Class B digital apparatus complies with Canadian ICES-003.

Cet appareil numérique de la classe B est conforme à la norme NMB-003 du Canada.



## Marking and European Economic Area (EEA)

Zebra hereby declares that this device is in compliance with all the applicable Directives, 2004/108/EC and 2006/95/EC. A Declaration of Conformity may be obtained from <http://www.zebra.com/doc>.

## Japan (VCCI) - Voluntary Control Council for Interference

この装置は、情報処理装置等電波障害自主規制協議会（VCCI）の基準に基づくクラスB情報技術装置です。この装置は、家庭環境で使用することを目的としていますが、この装置がラジオやテレビジョン受信機に近接して使用されると、受信障害を引き起こすことがあります。取扱説明書に従って正しい取り扱いをして下さい。

This is a Class B product based on the standard of the Voluntary Control Council for Interference from Information Technology Equipment (VCCI). If this is used near a radio or television receiver in a domestic environment, it may cause radio interference. Install and use the equipment according to the instruction manual.



## Waste Electrical and Electronic Equipment (WEEE)

**English:** For EU Customers: All products at the end of their life must be returned to Zebra for recycling. For information on how to return product, please go to: <http://www.zebra.com/weee>.

**Français:** Clients de l'Union Européenne : Tous les produits en fin de cycle de vie doivent être retournés à Zebra pour recyclage. Pour de plus amples informations sur le retour de produits, consultez : <http://www.zebra.com/weee>.

**Español:** Para clientes en la Unión Europea: todos los productos deberán entregarse a Zebra al final de su ciclo de vida para que sean reciclados. Si desea más información sobre cómo devolver un producto, visite: <http://www.zebra.com/weee>.

**Deutsch:** Für Kunden innerhalb der EU: Alle Produkte müssen am Ende ihrer Lebensdauer zum Recycling an Zebra zurückgesandt werden. Informationen zur Rücksendung von Produkten finden Sie unter <http://www.zebra.com/weee>.

**Italiano:** per i clienti dell'UE: tutti i prodotti che sono giunti al termine del rispettivo ciclo di vita devono essere restituiti a Zebra al fine di consentirne il riciclaggio. Per informazioni sulle modalità di restituzione, visitare il seguente sito Web: <http://www.zebra.com/weee>.

**Português:** Para clientes da UE: todos os produtos no fim de vida devem ser devolvidos à Zebra para reciclagem. Para obter informações sobre como devolver o produto, visite: <http://www.zebra.com/weee>.

**Nederlands:** Voor klanten in de EU: alle producten dienen aan het einde van hun levensduur naar Zebra te worden teruggezonden voor recycling. Raadpleeg <http://www.zebra.com/weee> voor meer informatie over het terugzenden van producten.

**Polski:** Klienci z obszaru Unii Europejskiej: Produkty wycofane z eksploatacji należy zwrócić do firmy Zebra w celu ich utylizacji. Informacje na temat zwrotu produktów znajdują się na stronie internetowej <http://www.zebra.com/weee>.

**Čeština:** Pro zákazníky z EU: Všechny produkty je nutné po skončení jejich životnosti vrátit společnosti Zebra k recyklaci. Informace o způsobu vrácení produktu najdete na webových stránkách: <http://www.zebra.com/weee>.

**Eesti:** EL klientidele: kõik tooted tuleb nende eluea lõppedes tagastada taaskasutamise eesmärgil Zebra'ile. Lisainformatsiooni saamiseks toote tagastamise kohta külastage palun aadressi: <http://www.zebra.com/weee>.

**Magyar:** Az EU-ban vásárlóknak: Minden tönkrement terméket a Zebra vállalatához kell eljuttatni újrahasznosítás céljából. A termék visszajuttatásának módjával kapcsolatos tudnivalóért látogasson el a <http://www.zebra.com/weee> weboldalra.

**Slovenski:** Za kupce v EU: vsi izdelki se morajo po poteku življenjske dobe vrniti podjetju Zebra za reciklažo. Za informacije o vračilu izdelka obiščite: <http://www.zebra.com/weee>.

**Svenska:** För kunder inom EU: Alla produkter som uppnått sin livslängd måste returneras till Zebra för återvinning. Information om hur du returnerar produkten finns på <http://www.zebra.com/weee>.

**Suomi:** Asiakkait Euroopan unionin alueella: Kaikki tuotteet on palautettava kierrätettäväksi Zebra-yhtiöön, kun tuotetta ei enää käytetä. Lisätietoja tuotteiden palauttamisesta on osoitteessa <http://www.zebra.com/weee>.

**Dansk:** Til kunder i EU: Alle produkter skal returneres til Zebra til recirkulering, når de er udtjent. Læs oplysningerne om returnering af produkter på: <http://www.zebra.com/weee>.

**Ελληνικά:** Για πελάτες στην Ε.Ε.: Όλα τα προϊόντα, στο τέλος της διάρκειας ζωής τους, πρέπει να επιστρέφονται στην Zebra για ανακύκλωση. Για περισσότερες πληροφορίες σχετικά με την επιστροφή ενός προϊόντος, επισκεφθείτε τη διεύθυνση <http://www.zebra.com/weee> στο Διαδίκτυο.

**Malti:** Għal klijenti fi-UE: il-prodotti kollha li jkunu waslu fl-aħħar tal-ħajja ta' l-użu tagħhom, iridu jiġu rritornati għand Zebra għar-riciklaġġ. Għal aktar taġġir dwar kif għandek tirritorna l-prodott, jekk jogħġbok żur: <http://www.zebra.com/weee>.

**Slovenski:** Za kupce v EU: vsi izdelki se morajo po poteku življenjske dobe vrniti podjetju Zebra za reciklažo. Za informacije o vračilu izdelka obiščite: <http://www.zebra.com/weee>.

**Slovenčina:** Pre zákazníkov z krajín EU: Všetky výrobky musia byť po uplynutí doby ich životnosti vrátené spoločnosti Zebra na recykláciu. Bližšie informácie o vrátení výrobkov nájdete na: <http://www.zebra.com/weee>.

**Lietuvių:** ES vartotojams: visi gaminiai, pasibaigus jų eksploatacijos laikui, turi būti grąžinti utilizuoti į kompaniją „Zebra“. Daugiau informacijos, kaip grąžinti gaminių, rasite: <http://www.zebra.com/weee>.

**Latviešu:** ES klientiem: visi produkti pēc to kalpošanas mūža beigām ir jānogādā atpakaļ Zebra otrreizējai pārstrādei. Lai iegūtu informāciju par produktu nogādāšanu Zebra, lūdzu, skatiet: <http://www.zebra.com/weee>.

## Service Information

If you have a problem using the equipment, contact your facility's Technical or Systems Support. If there is a problem with the equipment, they will contact the Zebra Support at: <http://www.zebra.com/support>.

For the latest version of this guide go to: <http://www.zebra.com/support>.