

BACK COVER WITH SWITCH (WA9302) INSTALLATION SHEET



Warning: Installation of any components must be performed using appropriate anti-static devices. If unavailable, discharge body static by touching a grounded metallic object before opening any covers on the hand-held.

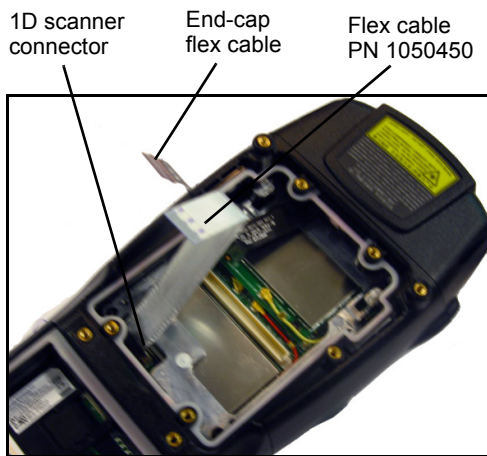
WA9302 back cover includes:

- Torx T6 screws (x6)
- Flex cable (PN 1050450)

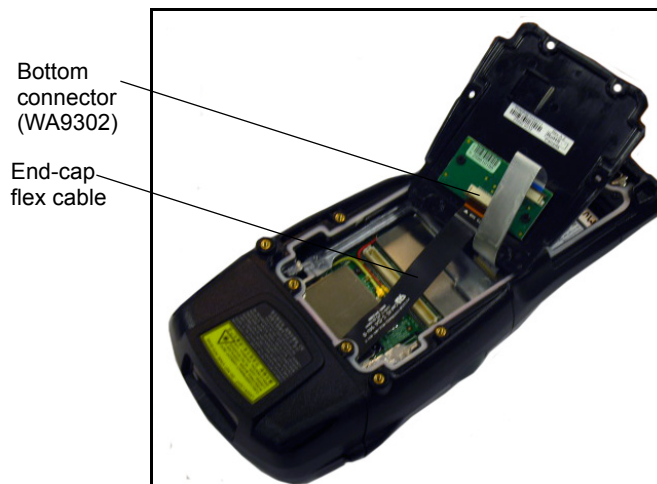


Important: Always disconnect the unit from all power sources (battery & A/C power) before servicing components.

1. Remove the battery and back cover (x6 screws).
2. Install the separate flex cable (PN 1050450) included with the WA9302 back cover into the 1D scanner connector on the hand-held, and push down on the connector latch to lock the flex cable in place.
3. Install the other end of the flex cable into the **top** connector on the back cover, and push the connector latch down to lock the flex cable in place



4. Connect the end-cap flex cable into the bottom connector on the WA9302 back cover.



5. Secure the WA9302 back cover using the 6 screws included. Torque to 2.5 in-lbs.
6. Install the battery and battery cover.

COMPANY HEADQUARTERS
Zebra Technologies Corporation
Lincolnshire, IL U.S.A.
<http://www.zebra.com>

SUPPORT SERVICES
Contact the Zebra Global Customer Support at:
<http://www.zebra.com/support>.