


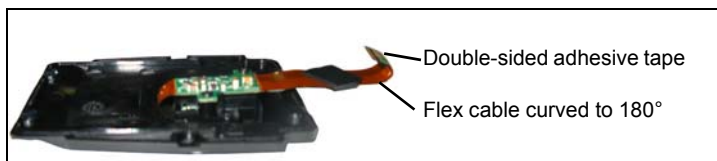
# WA9021 CAMERA BACK COVER KIT INSTALLATION INSTRUCTIONS

Along with the camera back cover, the camera kit includes:

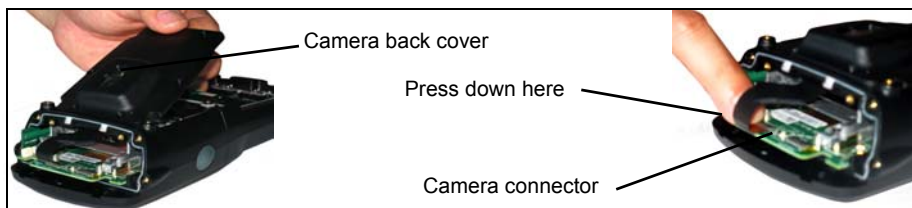
- M2.6x4L Torx T6 screws (x6)
- Square of white adhesive tape

 **CAUTION** Installation of any components must be performed using appropriate anti-static devices. If unavailable, discharge body static by touching a grounded metallic object before opening any covers on the hand-held.

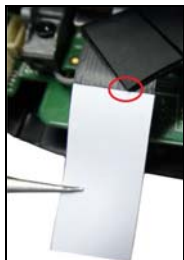
1. Remove the existing end-cap (x4 screws), back cover (x6 screws), and battery.
2. Gently bend the flex cable (already attached to the camera back cover) to create a curvature of approximately 180°. Do not fold or crease the flex as this will damage it.



3. Peel away the liner on the double-sided adhesive attached to the end of the flex cable.
4. Insert the camera back cover into the hand-held.
5. Insert the flex cable into the camera connector on the unit, using the white indicator to ensure proper alignment. Push the connector latch down to lock it in place.



6. Press down on the flex cable to ensure that the double-sided adhesive has secured the flex cable in place.
7. Peel the liner away from the supplied white adhesive tape, and align it with the edge of the rubber square on the flex cable.



8. Press down on the tape to attach it to the flex cable, and fold the tape under so that it sticks to the board.



9. Install the back cover using the 6 screws provided, torqued to 2.5 in-lbs.
10. Install the end-cap (x4 screws), torqued to 2.5 in-lbs.
11. Install the battery and battery cover.

## Service Information

If you have a problem using the equipment, contact your facility's Technical or Systems Support. If there is a problem with the equipment, they will contact the Global Support Center at: <http://www.zebra.com/support>.



Zebra Technologies Corporation  
Lincolnshire, IL U.S.A.  
<http://www.zebra.com>

Zebra and the Zebra head graphic are registered trademarks of ZIH Corp. The Symbol logo is a registered trademark of Symbol Technologies, Inc., a Zebra Technologies Company.

© 2015 Symbol Technologies, Inc.

