

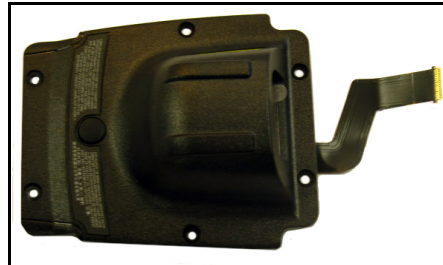
SE4500 (WA9019) SLIM POD PISTOL GRIP COMPATIBLE INSTALLATION SHEET



Warning: Installation of any components must be performed using appropriate anti-static devices. If unavailable, discharge body static by touching a grounded metallic object before opening any covers on the hand-held.

Along with the SE4500 slim pod, this kit includes:

- M2.6x4L Torx T6 screws (x6)

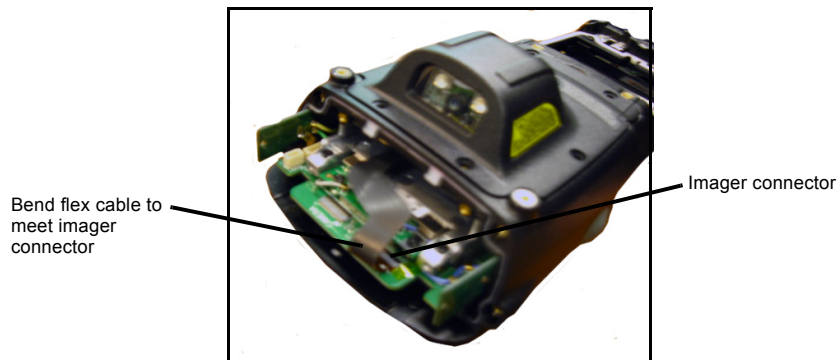


Important: Do not insert the end-cap flex cable into the 1D scanner connector on the unit. Instead, insert the flex cable into the imager connector at the top of the unit.

1. Remove the existing end-cap (x4 screws), back cover (x6 screws), and battery.
2. Install the slim pod using the 6 screws provided to a torque of 2.5 in-lbs.



3. Bend the flex cable toward the top of the slim pod back cover.
4. Unlatch the imager connector, and curl the flex cable around to mate with the imager connector.
5. Lock the imager connector latch to secure the flex cable in place.



6. Install the end-cap (x4 screws), torqued to 2.5 in-lbs.
7. Install the battery and battery cover.

Once the slim pod is installed:

1. Press **[Power] [FN/BLUE]** and the top-middle **[SCANNER]** button simultaneously to display the *Boot* menu.
2. Press the **[s]** key to display the *Scanner* menu. (For numeric keyboard users, press the **[FN/ORANGE]** key, press the **[7]** key **four times**, and then press the **[FN/ORANGE]** key again.)
3. Type the number corresponding with the slim pod you have installed – for example, type **65** to configure the *SE4500*.
4. Next, perform a *clean boot* – at the *Command>* prompt, type **.clean** (For numeric keyboard users, type **.25326**).

Note: Clean booting the device removes the add-on CAB file for Windows Embedded Handheld. It needs to be re-installed.

To re-install the add-on CAB file:

1. Download the add-on CAB file from *Ingenuity Working* to your Workabout Pro4.
2. Double-click the add-on CAB filename to install the CAB file.

The Workabout Pro4 restarts automatically to complete the installation.