

# M3 MOBILE

## Quick Manual

Model :

- SM10 (LTE)
- UL10
- BK10
- OX10(1G)
- ST10
- MT10
- PS10

**Headquarter**  
4F, Namjeon Building,  
44, Guujangbyeon-ro, Gwangjin-gu,  
Seoul, Korea, 05116  
Tel. +82 2 574 0037 (Ext.4)  
Fax. +82 2 556 0155  
www.m3mobile.net  
sales@m3mobile.co.kr

**Production Center/Service Center**  
Unit 610, 201  
Chun-ui Techno Park, 18,  
Bucheon-ro, 198beon-gil,  
Wonmi-gu, Bucheon-si,  
Gyeonggi-do, Korea, 14557  
Tel. +82 32 623 0037  
Fax. +82 70 4015 6323

Copyright©2017 M3 Mobile Co., Ltd. All Rights Reserved.

### NFC

#### Connecting with the NFC Device

- Open a Web page or the screen of a video, photo or contact.
- Place the back part of the NFC device toward the back of the SM10(LTE)
- Touch the screen then Data transmission would be started.

#### Connecting to the NFC chip / Tag card

- Hold the SM10(LTE) as shown below. Do not grip antenna area of the battery cover with your hands.
- Place the SM10(LTE) near the NFC chip or tag card until the data transfer is completed. (Generally, data is displayed in the application)

### CAMERA

#### Taking pictures

- Run the Camera program.
- Tap the Capture button to take a picture.
- Taken pictures are stored in Pictures & Video folder. (Start \Programs \Pictures&Video)

#### Taking videos

- Run the Camera program.
- Tap the Video Mode button to take a video.
- Taken videos are stored in Pictures&Videos folder/ (Start \Programs \Pictures&Videos)

### SCANNER

#### Scanning

- Launch the Scanner program (either ScanEmul or M3Scan Test)
- Press the SCAN BUTTON toward barcode to read.
- Make sure the laser beam covered whole barcode to read data properly



#### Imaging

- Launch the Scanner program.
- Press the SCAN BUTTON toward barcode to read.
- Make sure the scanner beam covered whole barcode to read data properly.



### CHARGING

LED Color	Description
Red	Battery is being charged.
Green	Battery is fully charged.

### SOFT RESET

#### Windows :

When unexpected error occurs while using the device, SOFT RESET allows your device to restart, similar to rebooting a computer. It will adjust memory allocation - all records and entries are retained after soft reset but unsaved data or files may be lost.

- Press the RESET BUTTON briefly.

#### Android :

Press and hold the Power button to display the power management menu. Select the "Power Off and Restart" menu. If the device stops its operation for a long time, press the Volume Down button + Back button + Camera button to proceed soft reset.

### CLEAN BOOT

#### Windows :

When an unexpected error cannot be solved with SOFT RESET, perform CLEAN BOOT to restart the system. It will erase all data stored in the device except in Flash Disk and return to its default settings

Follow below steps to CLEAN BOOT. (☰ + ⏻ + Ⓚ)

- Press the POWER BUTTON more than 10 seconds.
- Press and hold the (SEND) and (END) buttons together then press the POWER button briefly.
- When "Clean boot" sign will be displayed on the screen, press "1" to proceed CLEAN BOOT.

#### Android :

- Tap ☰ → Backup & reset → Factory data reset
- Check if Erase internal SD-Card is checked → Reset Phone → Erase everything

### Warning

- Risk of explosion if battery is replaced by an incorrect type. Dispose of used batteries according to the instructions.
- Battery contact pin can break if battery is forced to insert incorrectly. Watch out for the correct direction as indicated on the battery.
- Risk of explosion if unauthorized power supply is used.
- If an unapproved battery is used, it may explode.
- It may cause significant damages to your eyes if you look directly into the flash attached at camera module.

### OS UPDATE

M3 Mobile can distribute a new OS to improve the quality and performance of a product.

The latest OS is described in the online support page of M3 Mobile. The OS can be updated through two methods :

- i. Use the Micro-SD Card.
- ii. Connect the device through USB cable.
- iii. OTA Update over Wifi (SM10(LTE))

For detailed information on OS update, please refer to the "OS" item of the M3 FAQ (FAQ Download).

### TECHNICAL SUPPORT

Should you require any services or technical support on M3 Mobile's products, contact your supplier or visit M3 Mobile technical support web page.

Technical Support Website : <http://itc.m3mobile.net>

Desired or relevant manuals can be downloaded from Manuals or FAQ in technical support webpage. User manual, especially, is included in Flash Disk so that users can obtain it from the Flash Disk as well.

For DOA or RMA, please send the defective product to suitable address after consulting the supplier.

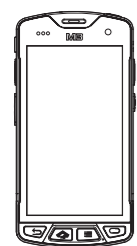
Wireless Device Country Approvals  
Europe include, Austria, Belgium, Bulgaria, Croatia, Czech Republic, Cyprus, Denmark, Estonia, Finland, France, Germany, Greece, Hungary, Iceland, Ireland, Italy, Latvia, Liechtenstein, Lithuania, Luxembourg, Malta, Netherlands, Norway, Poland, Portugal, Romania, Russia, Slovak Republic, Slovenia, Spain, Sweden, Switzerland, Turkey and the United Kingdom.

If you need more detail information, please visit M3 Mobile web site. [www.m3mobile.net](http://www.m3mobile.net)

## SM10(LTE)

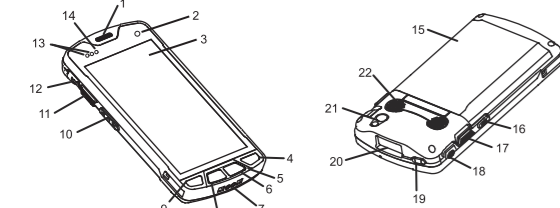
CE 2200

#### PACKAGE



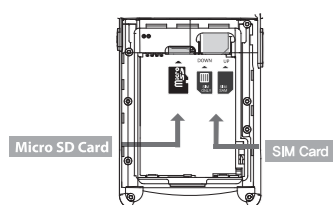
1. Device
2. Standard Battery
3. Quick Manual

#### DEVICE

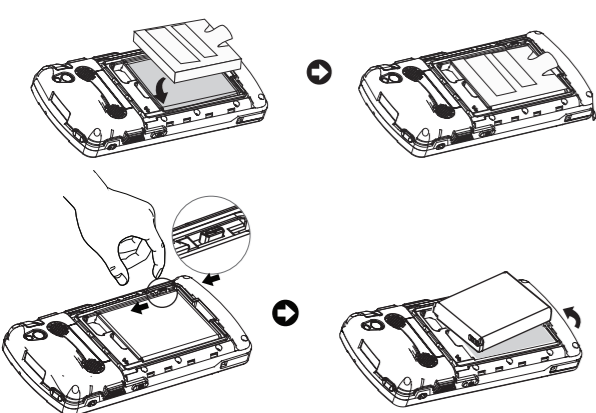


1. Receiver
2. Camera
3. Action Button
4. Menu Button
5. Changing Contacts
6. Home Button
9. Back Button
10. Volume Button
11. Scanner Button
12. Micro-USB Connector
14. Charging LED
15. Battery Cover
16. Camera Button
17. Scanner Button
18. Ear Jack Hole
19. Power Button
20. Scan Window
21. Camera
22. Speaker

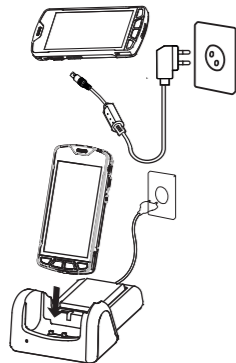
#### CARD INSTALLATION



#### BATTERY



#### CHARGING



## UL10

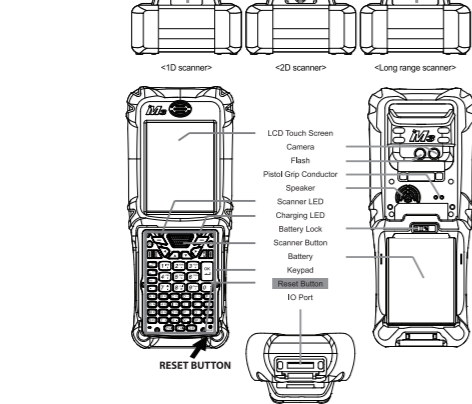
CE 0678

#### PACKAGE

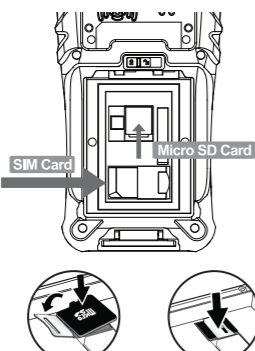


1. Device
2. Standard Battery
3. Stylus
4. Quick Manual
5. License

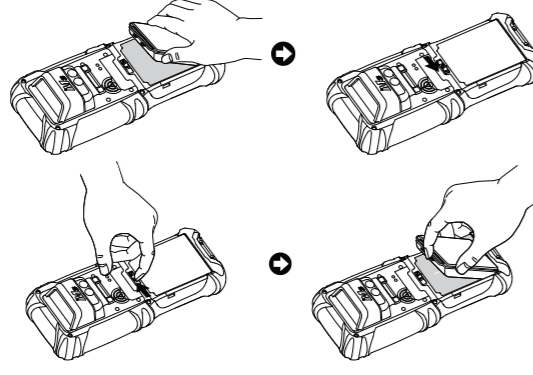
#### DEVICE



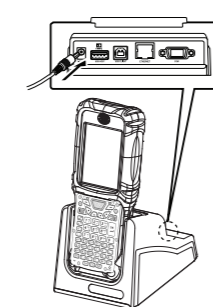
#### CARD INSTALLATION



#### BATTERY



#### CHARGING



## OX10(1G)

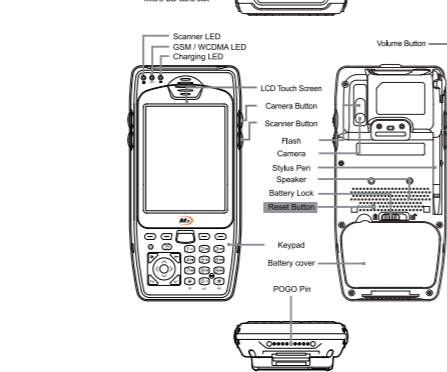
CE 0678

#### PACKAGE

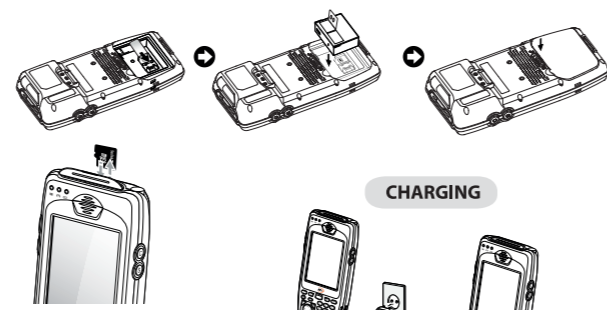


1. Device
2. Standard Battery
3. Stylus
4. Quick Manual
5. License

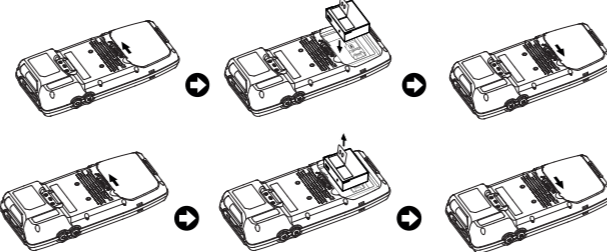
#### DEVICE



#### CARD INSTALLATION



#### BATTERY



## BK10

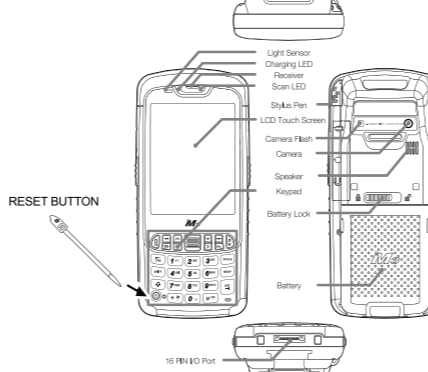
CE 0678

#### PACKAGE

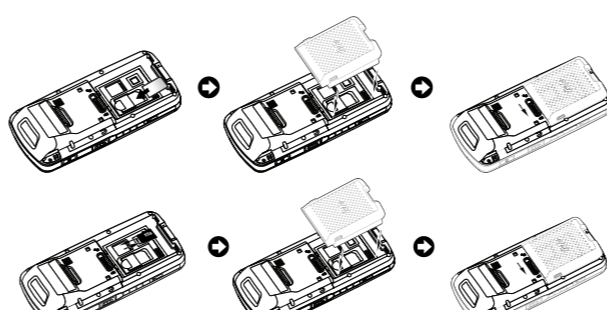


1. Device
2. Standard Battery
3. Stylus
4. Quick Manual
5. License

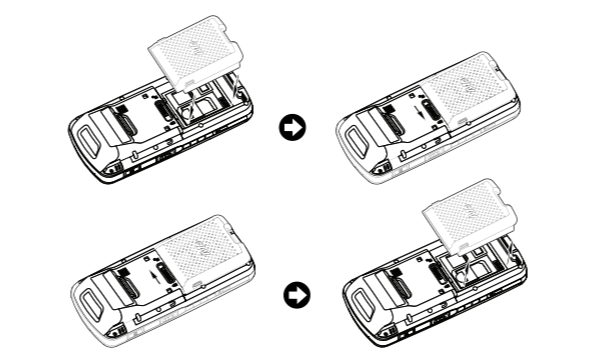
#### DEVICE



#### CARD INSTALLATION



#### BATTERY



## ST10

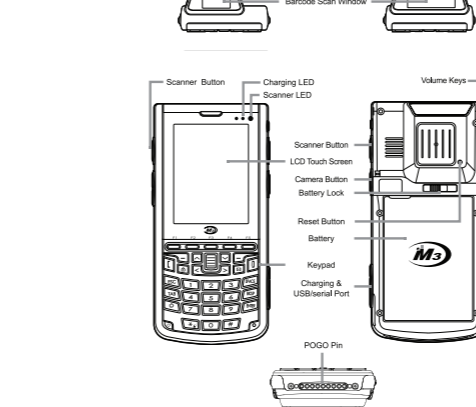
CE 0678

#### PACKAGE

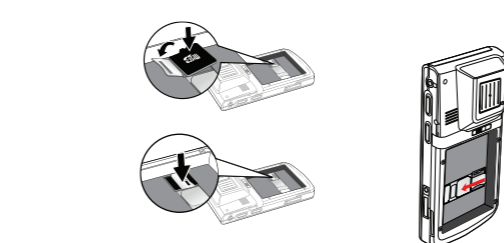


1. Device
2. Standard Battery
3. Stylus
4. Quick Manual
5. License

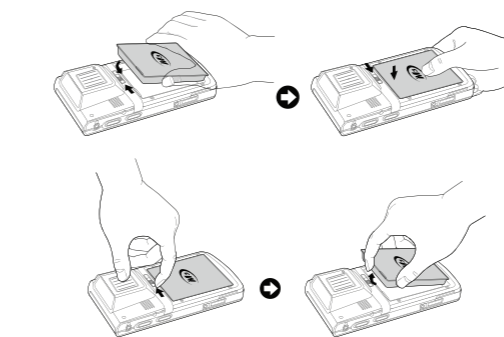
#### DEVICE



#### CARD INSTALLATION



#### BATTERY



#### CHARGING



## MT10

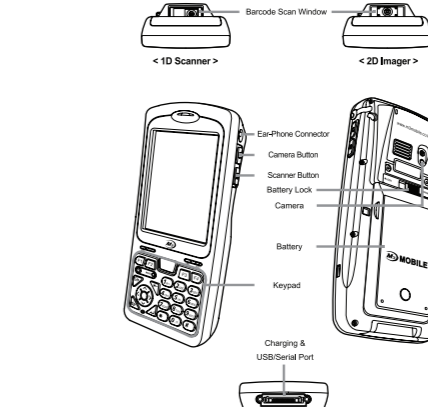
CE 0984

#### PACKAGE

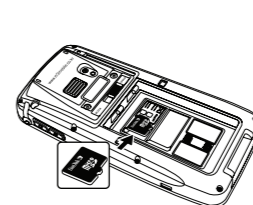


1. Device
2. Standard Battery
3. Stylus
4. Quick Manual
5. License

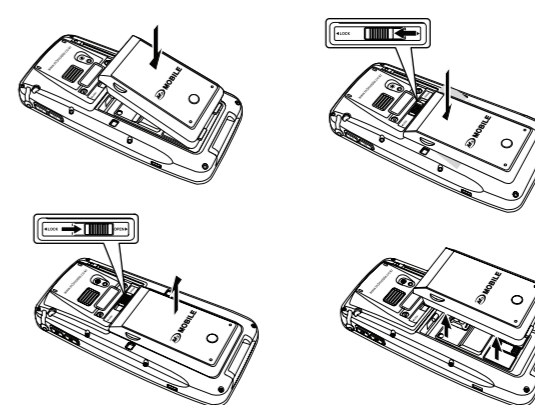
#### DEVICE



#### CARD INSTALLATION



#### BATTERY



#### CHARGING



## PS10

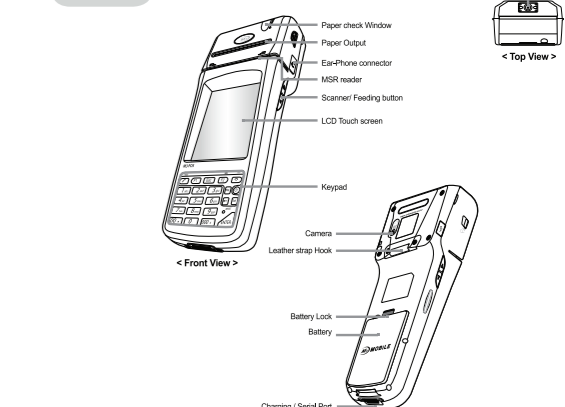
CE 0678

#### PACKAGE

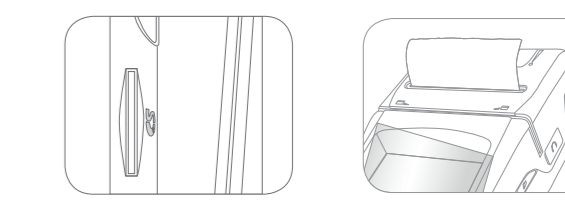


1. Device
2. Standard Battery
3. Stylus
4. Quick Manual
5. License

#### DEVICE



#### INSTALLATION



#### BATTERY

