

**Package**

Please make sure the following contents are in the HT1 gift box. If something is missing or damaged, please contact your unitech representative.

**Package contents with single slot cradle**

- HT1 Handheld Computer
- Wrist Strap
- Single Slot Cradle + Cradle Adapter
- Regulatory Compliance Statements
- Battery
- USB Cable
- Quick Start Guide
- QR Code Card

**Package contents without single slot cradle**

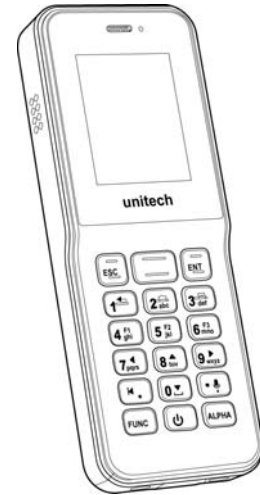
- HT1 Handheld Computer
- Wrist Strap
- Regulatory Compliance Statements
- Plugs + Adapter
- Battery
- USB Cable
- Quick Start Guide

**Single Slot Cradle Package**

- Single Slot Cradle
- Cradle Adapter
- Quick Start Guide

**Handheld Computer**

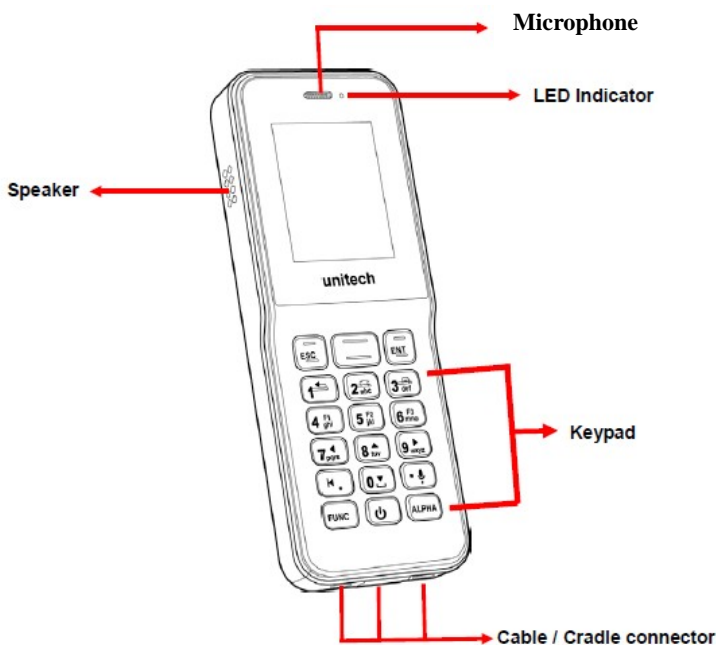
- HT1 -



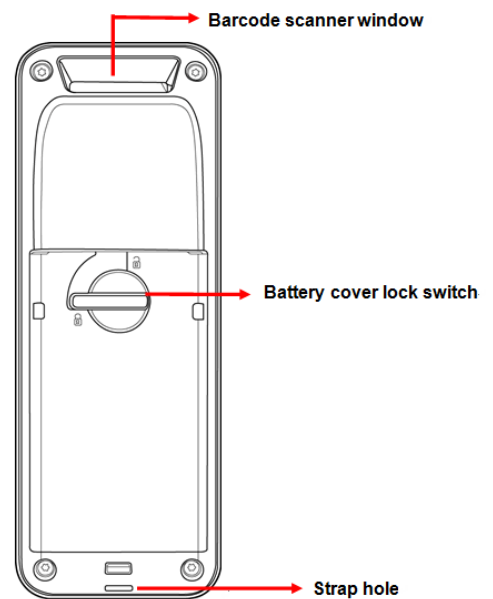
**Quick Start Guide**

401301G V1.1

**Product View ( Front View )**

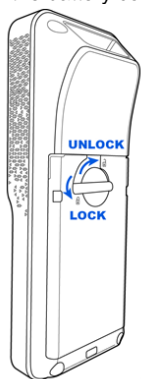


**Product View ( Rear View )**

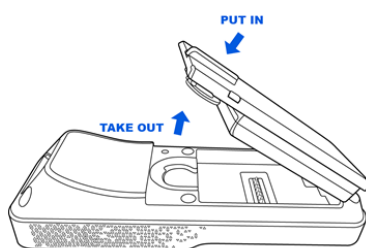


## Installing the Battery

1. Turn the switch left to lock the battery cover.  
Turn the switch up to unlock the battery cover.



2. You can take the battery out directly.

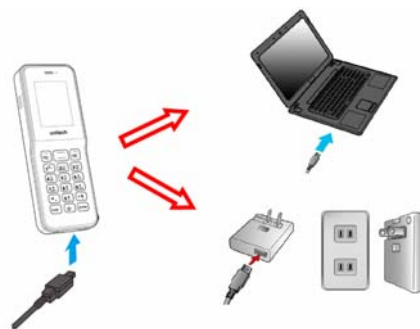


-4-

## Charging the Battery

### ■ Charge with USB

Connect the micro USB cable to the USB port at the bottom of HT1 and plug into your PC's USB port to simultaneously charge the HT1. Or plug the AC power adapter into the electrical outlet on the USB plug.  
*Note: AC power adapter is included in the package without cradle.*



### ■ Charge with cradle



-5-


## Keypad Definition



Key	Description
	Power key
	Enter key
	Alpha key
	Function key
	Trigger Key
	Escape Key
	Alphanumeric keys
	Back Key

-6-

## Using Function keys

Press the function key once, it will appear a blue symbol  in the status bar at the top of the screen. Then you can refer to the following table to execute the desired function or input.

Key	Description (Func)
	Return
	Home
	Menu
	Programmable key F1~F3
	Left, Up, Right, Down cursor keys

- CAUTION!** • To ensure the unit working properly, please keep all connectors away from the contaminants staying inside of them such as dust, grease, mud, and water. The negligence may cause the unit with no communication, short circuited, overheated and so on.
- If the connector is damaged, please ensure the connector is being fully repaired before using the unit to avoid causing short circuited.

<http://www.ute.com/>

-7-