



HT510A RFID/UHF Handheld Terminal Quick Start Guide

Unpacking

- Carefully remove all protective material from the HT510A and save the shipping container for later storage and shipping .
- Verify that the following were received.
 - Power adapter x1
 - USB data cable x1
 - HT510A handheld Terminal x1
 - 4500mAh Lithium-ion battery
 - 1-slot cradle
 - Plugs
 - Stylus
- Inspect the equipment for damage. If any equipment is missing or damaged, contact the local service center immediately.
- Prior to using the HT510A for the first, remove the protective shipping film that covers the display window.

Appearance and Buttons

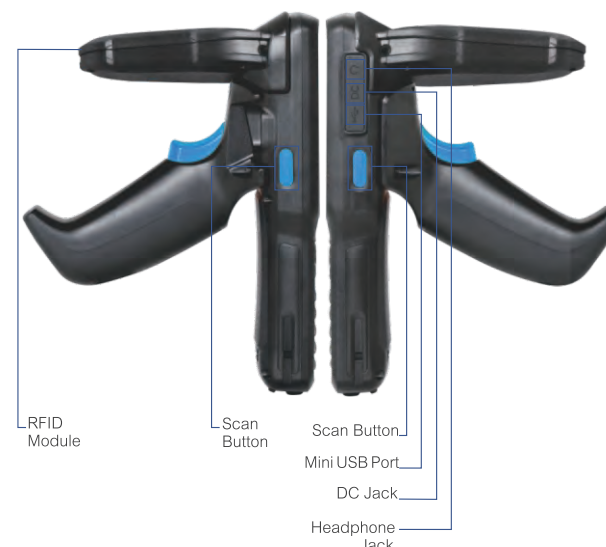
Front view



Back view



Side view



Features

- Battery release latch: Dig to remove the battery.
- Power button: Turns the display on and off. Press and hold to reset the device, power off or swap battery.
- Microphone: Use for communications in headset mode.
- Touch screen: Displays all information needed to operate.
- Charging LED: Indicates battery charging status while charging.
- Notification LED: Indicates system status while application generated notifications(programmable).
- Custom button: The key value can be programmed by user.
- RFID reader antenna: Provide communication with RFID Tag.
- Pogo pin: Provide charging with cradle.
- Trigger button: Trigger scan button with handle.
- Speaker: Provides audio out-put for video and music playback.
- Scan window: Provide data capture using the scanner.
- Scan button: Initiates data capture.

Indicators

Battery		Power high/AC adaptor Connected without battery inside
		Power medium
		Charging while Battery is medium or low
		Power low
Network signal strength		Good signal
		Fair signal
		No sim card
		Sim card error/No service
		WiFi on but not connected any WiFi network
WiFi		WiFi ON and connected
		WiFi off

Setup your Device

Inserting a SIM Card

- Only use a standard SIM card.
- Press battery latch and lift the battery to remove it.
 - Slide the SIM Card into the corresponding slots with contacts facing down.
 - Press and pull the card to remove.

Inserting a Micro-SD Card

- Slide the micro-SD card holder to Open position.
- Lift the micro-SD card holder.
- Slide the micro-SD card into the corresponding slot with contacts facing down.
- Close the micro-SD card holder and slide to Lock position.

Note:
Overexertion should be avoid when installing or removing the card.



Installing the Battery

1. Insert the battery from the top and slide it into the battery compartment.
2. Press the battery down into the battery compartment until the battery release latch snaps into place.



Standard Cradle

- 1-Slot Only Cradle with Battery Charger:
- Provides 5VDC power for operating the HT510A.
 - Simultaneously charges up to 1 HT510A and 1 battery using the standard cradle.



Device Charging

1. Insert the HT510A into a slot to begin charging.
2. Ensure the HT510A is seated properly

Battery Charging

The device's Charging/Notification LED indicates the status of the battery charging in the device. See table below for device charging status.

Off		Cradle is not powered.
Power LED		No spare battery in slot; Spare battery not placed correctly.
Solid Red		Spare battery is charging.
Solid Green		Spare battery charging is complete.

4-Slot Battery Charger (Optional)



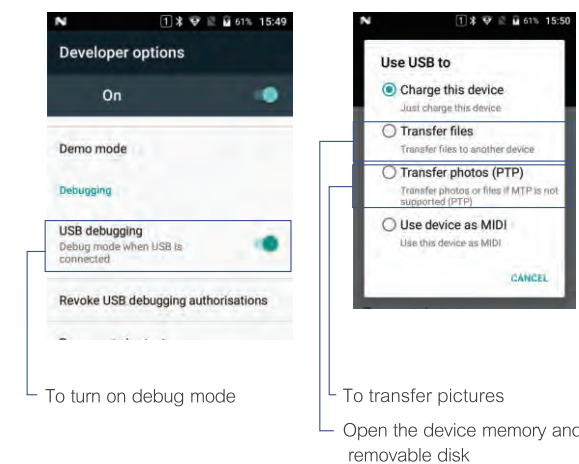
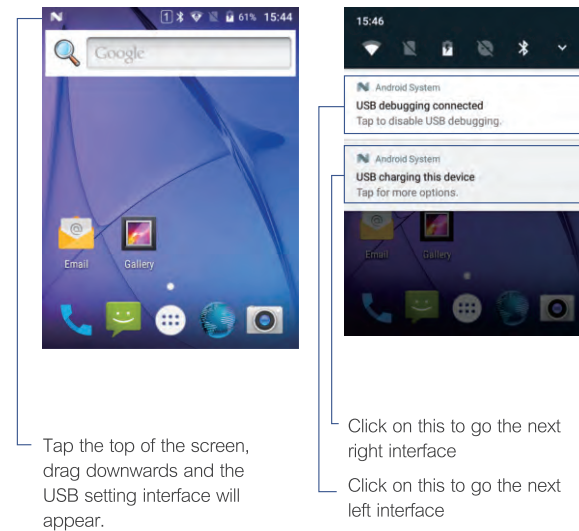
- Simultaneously charges up to 4 batteries

Lanyard (Optional)



Connecting to PC

After you install the Android driver or an Android smart phone assistant, you can connect the devices to your PC with USB cable provided. After device connected to your PC, the screen would display like this:



Device Care & Maintenance

Read all information before using the device to ensure safe and proper operation. Following are the warning information provided below to prevent incidents such as fire or explosion.

Warning

- Using unapproved power source, charger or battery may cause fire, explosion or other risks.
- Please use the accessories approved by manufacturer and corresponding to this model.
- Please charge device by standard charger of the manufacturer. Using other chargers may cause electrical leakage, fire, or damage to equipment and chargers.
- If charging is completed, remove the charger from the device and unplug the charger from the power outlet. Do not charge more than 12 hours.
- Do not expose to physical impact or damage.
- Do not use outdoor during a thunderstorm.
- Turn off the device before storage to prevent the battery to be completely drained.
- Do not expose to high temperatures, battery overheating may cause an explosion.
- Do not use the battery if the battery appears discoloration, deformation, abnormal heating, expansion and other phenomena.
- Stop using and disconnect all connections to other devices or cables before cleaning and maintaining the equipment.
- Do not touch the device with wet hands. Also, do not use the device in humid environments, such as rest rooms, or during water-base activities, such as swimming.
- It is recommended to use your device at temperature between 5 ~35°C (41~95°F) .
- Do not store the device near or in heaters, microwave, cooking equipment, or high pressure containers.
- Keep the device dry.
- Do not use the device in the environment of potential explosion risk (including the gas station, below the deck of the ship, near the transportation or storage facilities of fuel or chemicals, and the area in the air containing chemicals or grains, metal powder and other particles).

CAUTION!

- To ensure the unit working properly, please keep all connectors away from the contaminants staying inside of them such as dust, grease, mud, and water. The negligence may cause the unit with no communication, short circuited, overheated and so on.
- If the connector is damaged, please ensure the connector is being fully repaired before using the unit to avoid causing short circuited.

<http://www.ute.com/>

Copyright 2019 unitech Electronics Co., Ltd. All rights reserved.
unitech is a registered trademark of unitech Electronics Co., Ltd.

Thank you for purchasing the unitech product.
For other product documentation, please scan the QR code for more information.

