

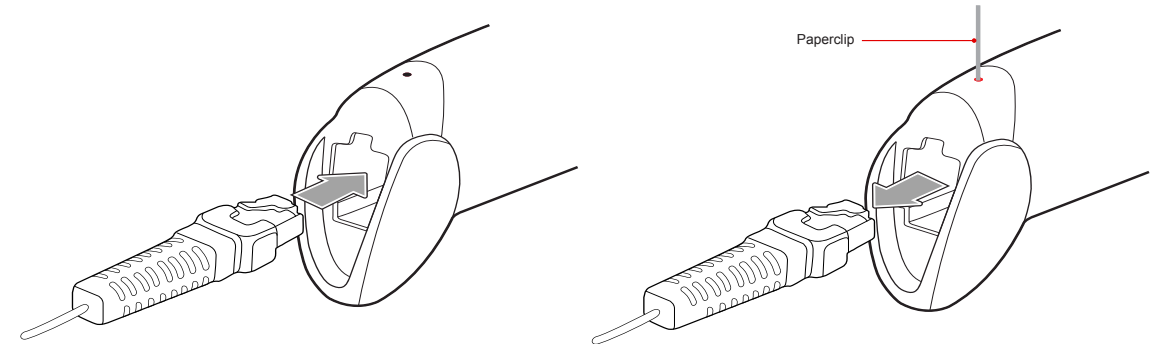


The Unitech MS250 Linear Imager Scanner
Installation Instructions & Popular Configuration Settings

SETUP AND INSTALLATION

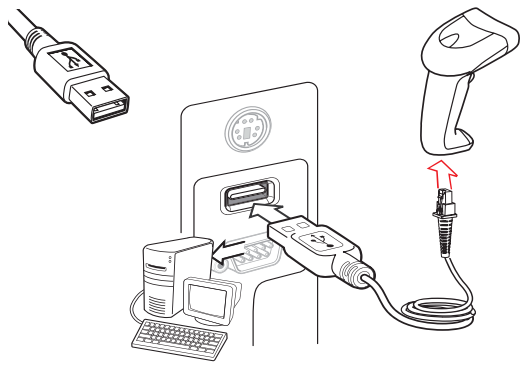
The following steps will walk you through the installation process.

CONNECTING AND DISCONNECTING THE INTERFACE CABLE



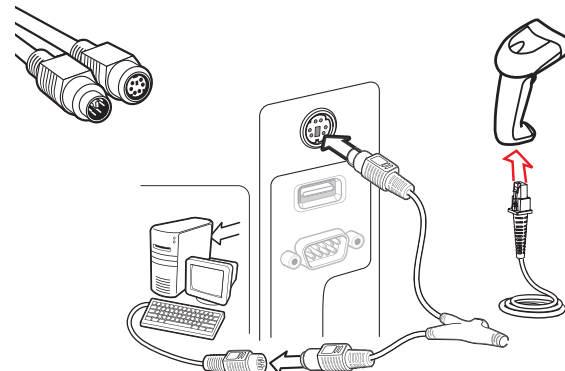
An audible “click” sound indicates the interface cable has been plugged in correctly and the connector lock is engaged. To unplug the interface cable, release the connector lock by inserting one end of a paperclip into the handle.

CONNECT TO HOST VIA USB



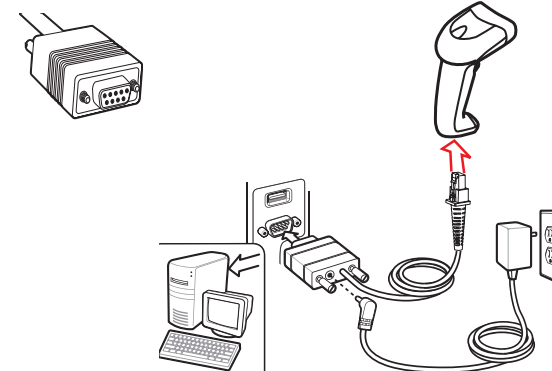
Plug the interface cable into a free USB port of a host computer.

CONNECT TO HOST VIA PS/2



Plug the interface cable into the keyboard port of a host computer.

CONNECT TO HOST VIA RS232



Plug the interface cable into the RS232 port of a host computer. Plug the power supply cable into the RS232 connector and into an electrical outlet.*

TEST & FINISH

Open a word processing program such as Microsoft Word or Notepad on your host. Now scan the following barcode:



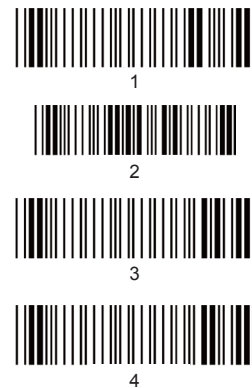
If the word “Unitech” appears on the screen you have successfully installed your scanner. Congratulations!

SETTINGS AND CONFIGURATION

The following section covers the most common configuration settings for your MS250 scanner.

For additional configuration options please visit unitechscanners.com/MS250 and select the “Download” tab. You will find the User’s Manual and a variety of other resources.

TAB MODE



You may wish to set your scanner to “Tab Mode.” In this mode, data will tab over to the next column as you scan. Scan this series of barcodes to switch to Tab Mode from the default Enter Mode.

ENTER MODE



Scan this series of barcodes to switch back to Enter mode. In Enter Mode, data will jump to the next line as you scan.

FLASH MODE



Scan this series of barcodes to switch to Flash Mode from the default Trigger Mode. In Flash mode, the MS250 will function automatically. It will scan at a set interval.

TRIGGER MODE



Scan this series of barcodes to switch back to Trigger Mode. In Trigger Mode, the MS250 will scan only when the scanner button is pressed.

DEFAULT SETTINGS



Scan here to return your scanner to its original factory settings, a useful feature for troubleshooting purposes.

HOW CAN WE HELP YOU?

The MS250 is a plug-and-play scanner.* It does not require a driver and should be recognized as a generic HID device by your computer, similar to a standard keyboard. This allows you to scan into any field that you could normally type into.

Unitech's professional support team is available to quickly answer questions or technical-related issues. Should equipment issues occur, please contact a Unitech Service Representative at (800) 861-8648 for more information.

*RS232 connections may require additional software