

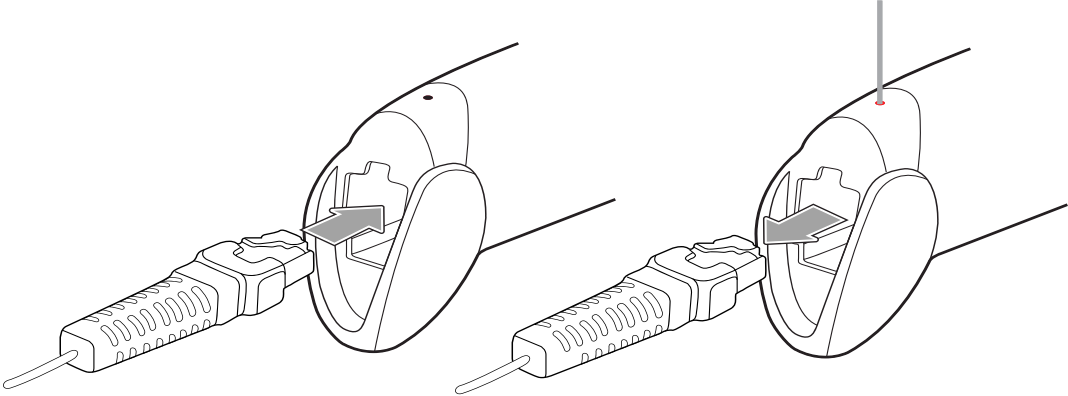


The Unitech MS842 Laser Scanner
Installation Instructions & Popular Configuration Settings

SETUP AND INSTALLATION

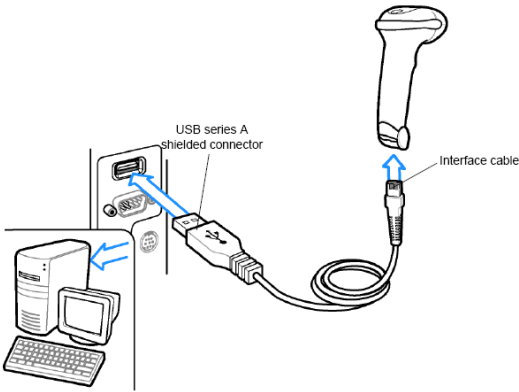
The following steps will walk you through the installation process.

CONNECTING AND DISCONNECTING THE INTERFACE CABLE



An audible “click” sound indicates the interface cable has been plugged in correctly and the connector lock is engaged. To unplug the interface cable, release the connector lock by inserting one end of a paperclip into the handle.

CONNECTING USB CABLE TO A HOST



Plug the the interface cable into a free USB port of a host computer.
The MS842 is now ready to use.

TEST & FINISH

Open a word processing program such as Microsoft Word or Notepad on your host. Now scan the following barcode:



If the word “Unitech” appears on the screen you have succesfully installed your scanner. Congratulations!

SETTINGS AND CONFIGURATION

The following section covers the most common configuration settings for your MS842 scanner.

For additional configuration options please visit unitechscanners.com/MS842 and select the “Download” tab. You will find the User’s Manual and a variety of other resources.

FLASH MODE



Flash Mode

Scan here to switch to Flash Mode from the default Trigger Mode. In Flash mode, the MS842 will function automatically. It will scan at a set interval.

TRIGGER MODE



Trigger Mode

Scan here to switch back to Trigger Mode. In Trigger Mode, the MS842 will scan only when the scanner button is pressed.

TAB MODE



Tab Mode Start

You may wish to set your scanner to “Tab Mode.” In this mode, data will tab over to the next column as you scan instead of jumping to the next line. Scan here to begin switching to Tab Mode from the default Enter Mode.

TAB MODE CONT.



1



0



0



9

Now scan these barcodes in the following order: 1, 0, 0, 9. Please make sure the “x” marker is in the center of the barcode as you scan.

HOW CAN WE HELP YOU?

The MS842 is a plug-and-play scanner. It does not require a driver and should be recognized as a generic HID device by your computer, similar to a standard keyboard. This allows you to scan into any field that you could normally type into.

Unitech’s professional support team is available to quickly answer questions or technical-related issues. Should equipment issues occur, please contact a Unitech Service Representative at (800) 861-8648 for more information.

TAB MODE CONT.



Enter

Scan here to enter your settings. You are now in Tab Mode.

ENTER MODE & DEFAULT SETTINGS



Factory Default

Scan here to return to Enter Mode. This barcode will also return your scanner to its original factory settings, a useful feature for troubleshooting purposes.