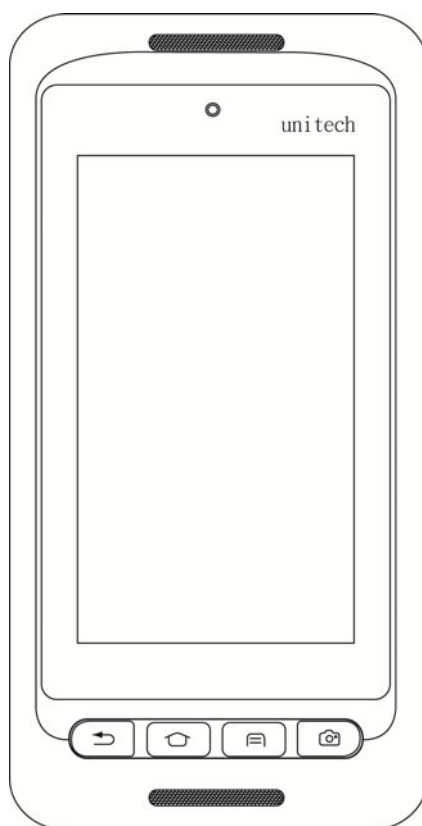


# Rugged Handheld Computer

- PA726 -



## User's Manual

Version 1.1



## Revision History

<b>Date</b>	<b>Change Description</b>	<b>Version</b>
2018/2/9	first published version	1.0
2018/2/23	Update 1.2 Product Detail	1.1

### About This Manual

Thank you for purchasing the unitech product.

This manual explains how to install, operate and maintain our product.

No part of this publication may be reproduced or used in any form, or by any electrical or mechanical means, such as photocopying, recording, or information storage and retrieval systems, without permission in writing from the manufacturer. The material in this manual is subject to change without notice.

## Regulatory Compliance Statements

---

### FCC Warning Statement

This device has been tested and found to comply with the limits for a Class B digital device, pursuant to part 15 of the FCC rules. These limits are designed to provide reasonable protection against harmful interference in a residential installation. This equipment generates, uses and can radiate radio frequency energy and, if not installed and used in accordance with the instructions, may cause harmful interference with radio communications. However, there is no guarantee that interference will not occur in a particular installation. If this equipment does cause harmful interference with radio or television reception, which can be determined by turning the equipment off and on, the user is encouraged to try to correct the interference by one or more of the following measures:

- Reorient or relocate the receiving antenna.
- Increase the separation between the equipment and receiver.
- Connect the equipment into an outlet on a circuit different from that to which the receiver is connected.
- Consult the dealer or an experienced radio/TV technician for help.

1. This transmitter must not be co-located or operating in conjunction with any other antenna or transmitter.
2. This device complies with FCC RF radiation exposure limits set forth for an uncontrolled environment. To maintain compliance with FCC RF exposure requirements, avoid direct contact to the transmitting antenna during transmitting.
3. Any changes or modifications (including the antennas) made to this device that are not expressly approved by the manufacturer may void the user's authority to operate the equipment.

## **FCC Label Statement**

This device complies with part 15 of the FCC rules. Operation is subject to the following two conditions:

1. This device may not cause harmful interference.
2. This device must accept any interference received, including interference that may cause undesired operation.

## **RF Radiation Exposure Statement**

For body contact during operation, this device has been tested and meets FCC RF exposure guidelines when used with an accessory that contains no metal and that positions the handset a minimum of 1.0 cm from the body.

Use of other accessories may not ensure compliance with FCC RF exposure guidelines.

## **European Conformity Statement**

unitech Electronics co., Ltd herewith declares that the unitech product is in compliance with the essential requirements and all other provisions of the RED 2014/53/EU directive.

The declaration of conformity is available for download at :

<https://portal.unitech.eu/public/Safetyregulatorystatement>

## **CE RF Exposure Compliance**

For body-worn operation, this device has been tested and meets the ICNIRP guidelines and the European Standard EN 62209-2, for use with dedicated accessories, SAR is measured with this device at a separation of 0.5 cm to the body, while transmitting at the highest certified output power level in all frequency bands of this device. Use of other accessories which contain metals may not ensure compliance with ICNIRP exposure guidelines.

## **CE Mark Warning**



The highest CE SAR values for the device are as follows :

0.316W/kg @ 10g (Head)

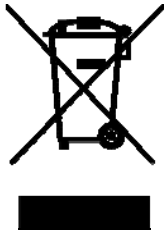
1.593W/kg @ 10g (Body)

## RoHS Statement



This device conforms to RoHS (Restriction Of Hazardous Substances) European Union regulations that set maximum concentration limits on hazardous materials used in electrical and electronic equipment.

## Waste electrical and electronic equipment (WEEE)



unitech has set up a policy and process to meet the 2012/19/EU concerning electronic waste disposal.

For more detailed information of the electronic waste disposal of the products you have purchased from unitech directly or via unitech's resellers, you shall either contact your local supplier or visit us at :

<https://portal.unitech.eu/public/WEEE>

## Taiwan NCC Warning Statement

### 低功率電波輻射性電機管理辦法

第十二條：經型式認證合格之低功率射頻電機，非經許可，公司、商號或使用者均不得擅自變更頻率、加大功率或變更原設計之特性及功能。

第十四條：低功率射頻電機之使用不得影響飛航安全及干擾合法通信；經發現有干擾現象時，應立即停用，並改善至無干擾時方得繼續使用。

前項合法通信，指依電信法規定作業之無線電通信。

低功率射頻電機需忍受合法通信或工業、科學及醫療用電波輻射性電機設備之干擾。

#### 注意事項：

1. 使用過度恐傷害視力。
2. 使用30分鐘請休息10分鐘；2歲以下幼兒不看螢幕，2歲以上每天看螢幕不要超過1小時。
3. 減少電磁波影響，請妥適使用。

## Laser Information

---

The unitech product is certified in the U.S. to conform to the requirements of DHHS/CDRH 21CFR Subchapter J and to the requirements of IEC 60825-1. Class II and Class 2 products are not considered to be hazardous. The unitech product contains internally a Visible Laser Diode (VLD) whose emissions do not exceed the maximum limits as set forth in the above regulations. The scanner is designed so that there is no human access to harmful laser light during normal operation, user maintenance or prescribed service operations.

The laser safety warning label required by the DHHS/IEC for the unitech product's optional laser scanner module is located on the memory compartment cover, on the back of the unit.

\* Laser information only applies to the products with laser components.

**CAUTION!** Use of controls or adjustments or performance of procedures other than those specified herein may result in hazardous laser light. Use of optical instruments with the scanner, including binoculars, microscopes, and magnifying glasses, will increase eye damage. This does not include eyeglasses worn by the user.

## LED Information

---

The unitech product contains LED indicator(s) or LED ring whose luminance is not harmful to human eyes during normal operation, user maintenance or prescribed service operations.

\*LED information only applies to the products with LED components.



## Battery Notice

---

1. To guarantee optimal performance, it is recommended that rechargeable batteries be replaced every year, or after 500 charging cycles are completed. It is normal for the battery to balloon or expand after one year or 500 cycles. Although it does not cause damage, it cannot be used again and must be disposed of according to the location's safe battery disposal procedures.
2. If a battery performance decreases more than 20%, the battery is at the end of its life cycle. Stop use and ensure the battery is disposed of properly.
3. The length of time that a battery lasts depends on the battery type and how the device is used. Conserve the battery life by doing the following:
  - Avoid fully uncharging the battery because this places additional strain on it. Several partial uncharges with frequent charges are better than a fully uncharged battery. Charging a partially charged battery does not cause harm to the unit.
  - Keep the battery cool. Avoid hot vehicles. For prolonged storage, keep the battery at a 40% charge level.
  - Do not leave the battery uncharged and unused for an extended period of time, the battery will wear out and the longevity of the battery will be at least half of one with frequent charges.
4. Protect battery life by not over or under charging the battery.
5. Please do not leave battery unused for long time without charging it. Despite unitech's safety precautions, the battery pack may begin to change shape. If so, stop using it immediately. Please check to see if you are using a proper power adapter to charge the battery or contact your service provider for service.
6. If you cannot charge the battery after it has been idle for an extended period of time and it begins to heat up, please do not try to charge it. It may not be functional anymore.
7. Please only use the original battery from unitech. Using a third party battery can damage our products. Please note that when such damage occurs, it is not covered by unitech's warranty policy.

**CAUTION!**

- RISK OF EXPLOSION IF BATTERY IS REPLACED INCORRECTLY. DISPOSE OF USED BATTERIES ACCORDING TO THE INSTRUCTIONS.
- 如果更換不正確之電池行事會有爆炸的風險  
請依製造商說明書處理用過之電池
- 如果更換不正確之電池行事會有爆炸的風險  
請依製造商說明書處理用過之電池

## Battery charge notice

It is important to consider temperature when the battery pack is charging. Charging is most efficient at normal room temperature or in a slightly cooler environment. It is essential that batteries are charged within the stated range of 0°C to 40°C. Charging batteries outside of the specified range could damage the batteries and shorten their life cycle.

**CAUTION!** Do not charge batteries at a temperature lower than 0°C. This will make the batteries unstable and dangerous. Please use a battery temperature detecting device for a charger to ensure a safe charging temperature range.

**CAUTION!** To ensure the unit working properly, please keep all connectors away from the contaminants staying inside of them such as dust, grease, mud, and water. The negligence may cause the unit with no communication, short circuited, overheated and so on.

**CAUTION!** If the connector is damaged, please ensure the connector is being fully repaired before use the unit to avoid causing short circuited.

## Storage and safety notice

Although charged batteries may be left unused for several months, their capacity may be depleted due to build up of internal resistance. If this happens, they will require recharging prior to use. Batteries may be stored at temperatures between -20°C to 60°C, however they may deplete more rapidly at higher temperatures. It is recommended to store batteries at room temperature.

*\* The message above only applies to the usage of the removable batteries.  
For the products with non-removable batteries / without batteries, please refer to the specification of each product.*

## Product Operation and Storage Notice

The unitech product has applicable operation and storage temperature conditions. Please follow the limitation of suggested temperature conditions to avoid failure, damage or malfunction.

*\* For applicable temperature conditions, please refer to the specification of each product.*

## Adapter Notice

---

1. Please do not leave the power adapter in the socket when it is not connected to your unitech product for charging.
2. Please remove the power adapter when the battery is fully recharged.
3. The bundled power adapter that comes with your unitech product is not meant to be used outdoors. An adapter exposed to water or rain, or a very humid environment can cause damage to both the adapter and the product.
4. Please only use the bundled power adapter or same specification of adapter to charge your unitech product. Using the wrong power adapter can damage your unitech product.

*\* The message above only applies to the product connected to the adapter.  
For the products without using the adapters, please refer to the specification of each product.*

# Hearing Damage Warning

---

To prevent possible hearing damage, do not listen at high volume levels for long periods.



Figure 1 – Warning label (IEC 60417-6044)

## Worldwide Support

unitech's professional support team is available to quickly answer questions or assist with technical-related issues. Should an equipment problem occur, please contact the nearest unitech regional service representative.

For complete contact information please visit the Web sites listed below:

<p><b>Taipei, Taiwan – Headquarters</b></p> <p><b>Tel:</b> +886-2-89121122</p> <p><b>E-mail:</b> info@hq.ute.com</p> <p><b>Address:</b> 5F, No. 136, Lane 235, Baoqiao Road, Xindian District, New Taipei City 231, Taiwan (R.O.C.)</p> <p><b>Website:</b> <a href="http://www.ute.com">http://www.ute.com</a></p>	<p><b>Europe</b></p> <p><b>Tel:</b> +31-13-4609292</p> <p><b>E-mail:</b> info@eu.ute.com</p> <p><b>Address:</b> Kapitein Hatterasstraat 19, 5015 BB, Tilburg, the Netherlands</p> <p><b>Website:</b> <a href="http://eu.ute.com">http://eu.ute.com</a></p>
<p><b>China</b></p> <p><b>Tel:</b> +86-59-2310-9966</p> <p><b>E-mail:</b> info@cn.ute.com</p> <p><b>Address:</b> Room401C, 4F, RIHUA International Mansion, Xinfeng 3rd Road, Huoju Hi-tech District, Xiamen, Fujan , China</p> <p><b>Website:</b> <a href="http://cn.ute.com">http://cn.ute.com</a></p>	<p><b>Japan</b></p> <p><b>Tel:</b> +81-3-35232766</p> <p><b>E-mail:</b> info@jp.ute.com</p> <p><b>Address:</b> Kayabacho Nagaoka Building 8F.,1-5-19 Shinkawa, Chuo-Ku, Tokyo, 104-0033, Japan</p> <p><b>Website:</b> <a href="http://jp.ute.com">http://jp.ute.com</a></p>
<p><b>Asia &amp; Pacific / Middle East</b></p> <p><b>Tel:</b> +886-2-27911556</p> <p><b>E-mail:</b> info@apac.ute.com info@india.ute.com info@mideast.ute.com</p> <p><b>Address:</b> 4F., No. 236, ShinHu 2nd Rd., NeiHu Chiu, 114, Taipei,Taiwan</p> <p><b>Website:</b> <a href="http://apac.ute.com">http://apac.ute.com</a> / <a href="http://mideast.ute.com">http://mideast.ute.com</a></p>	<p><b>Latin America</b></p> <p><b>Tel:</b> +52-55-5171-0528</p> <p><b>E-mail:</b> info@latin.ute.com</p> <p><b>Address:</b> 17171 Park Row, Suite 210 Houston, TX 77084USA (Rep.)</p> <p><b>Website:</b> <a href="http://latin.ute.com">http://latin.ute.com</a></p>
<p><b>North America</b></p> <p><b>Tel:</b> +1-714-8916400</p> <p><b>E-mail:</b> info@us.ute.com / info@can.ute.com</p> <p><b>Address:</b> 6182 Katella Ave, Cypress, CA 90630, USA</p> <p><b>Website:</b> <a href="http://us.ute.com">http://us.ute.com</a></p>	<p><b>Please scan QR Code to visit us :</b></p> 

## Warranty Policy

---

The following items covered under the unitech Limited Warranty are free from defects during normal use:

The warranty period is varied from each country. Please consult with your supplier or unitech local office for actual length of warranty period to your purchased product.

Warranty becomes void if equipment is modified, improperly installed or used, damaged by accident or neglect, or if any parts are improperly installed or replaced by the user.

## Table of Contents

<b>Preface</b> .....	i
Regulatory Compliance Statements .....	i
Laser Information .....	iii
LED Information .....	iii
Battery Notice.....	iv
Adapter Notice.....	vi
Hearing Damage Warning .....	vii
Worldwide Support .....	x
Warranty Policy .....	xii
Chapter 1 - Overview.....	1
1.1 Package .....	1
1.2 Product Detail.....	2
1.3 Specifications .....	5
1.4 Getting Started .....	12
Chapter 2 – Installation & Operation.....	18
2.1 Barcode Setting.....	18
2.2 HF Setting .....	24
2.3 UHF Setting.....	25
2.4 MSR Setting .....	25
2.5 WWAN Setting.....	26
2.6 WLAN Setting.....	28
2.7 PAN Setting .....	29
2.8 GPS Setting.....	30
2.9 PC Setting .....	32
2.10 Camera Setting .....	33
2.11 Performing a Hardware Reset .....	38
2.12 Performing Factory data reset .....	39
2.13 Programmable Keys.....	40
2.14 Battery Swap .....	47
Chapter 3 – Introduction to Applications.....	50

3.1 Scan Service .....	50
3.2 File Manager .....	55
3.3 Update Center .....	56
3.4 Sound Recorder .....	57
3.5 Push to Talk.....	59
3.6 MoboLink.....	60



# Chapter 1 - Overview

## 1.1 Package

---

Please make sure the following contents are in the PA726 gift box. If something is missing or damaged, please contact your unitech representative.

### The standard package contents

- PA726 Terminal
- Battery
- Hand Strap
- QR Code Card
- Quick Start Guide
- Regulatory Compliance Statements

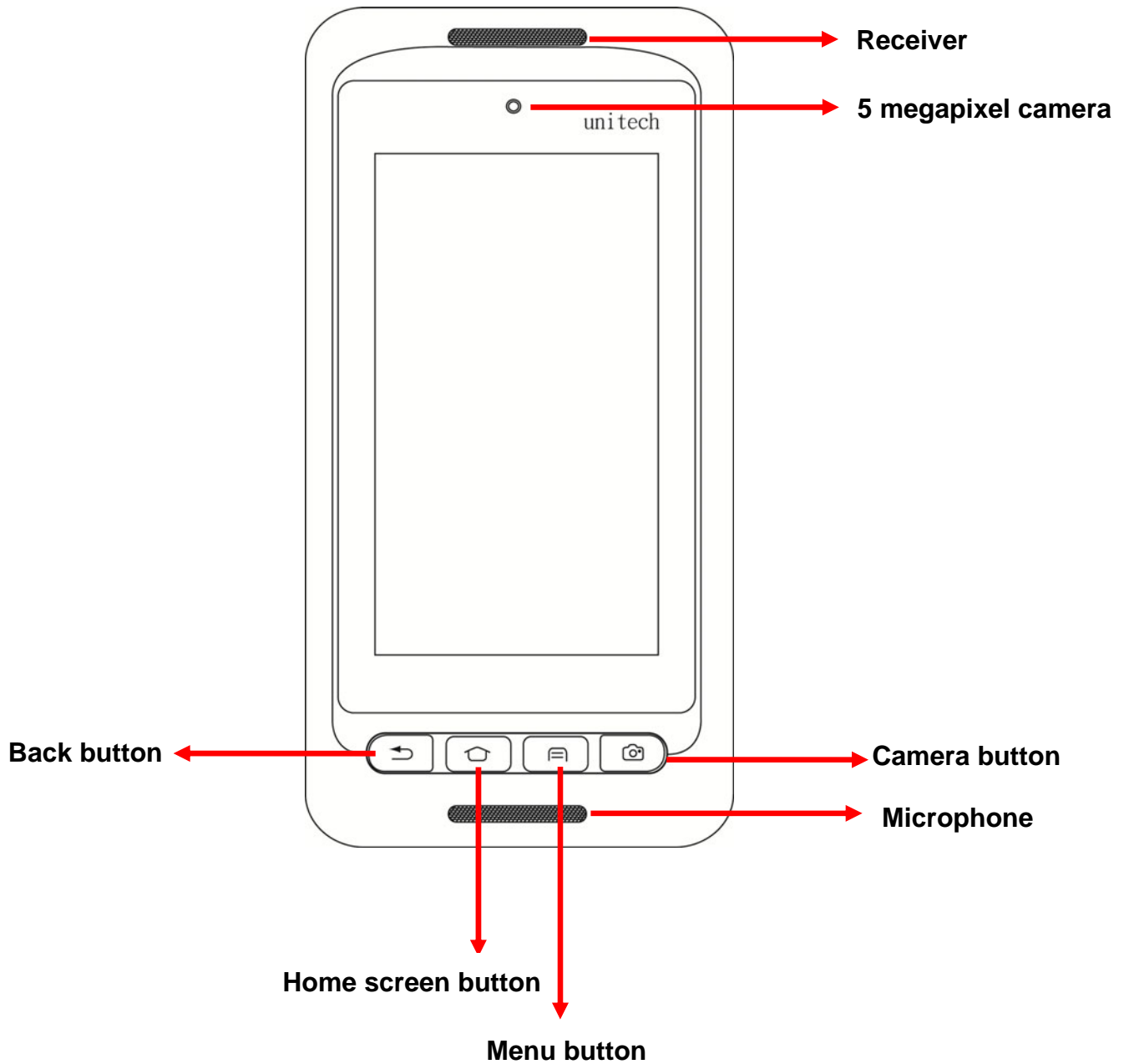
### Optional accessories

- 4-slot Ethernet Cradle
- 4-slot Terminal Charging Cradle
- 1-slot USB Cradle
- 1-slot Ethernet Cradle
- 4-slot Battery Charger
- Vehicle Charger
- USB Holder Cable
- Hand Strap with stylus loop
- Stylus & Coiled Strap
- Bumper
- Gun Grip
- Wrist-arm Mount
- 9H Glass Screen Protector

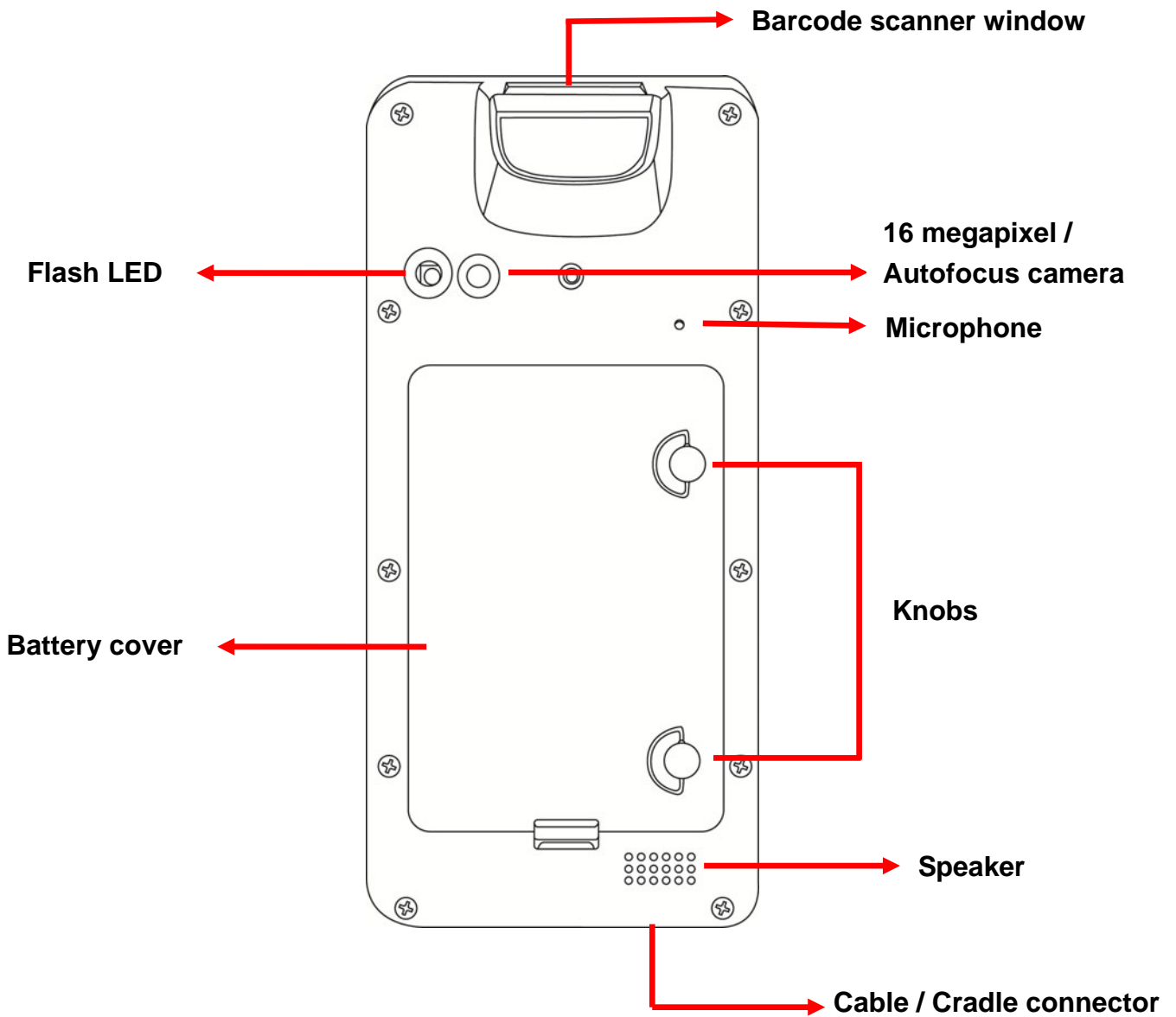
## 1.2 Product Detail

---

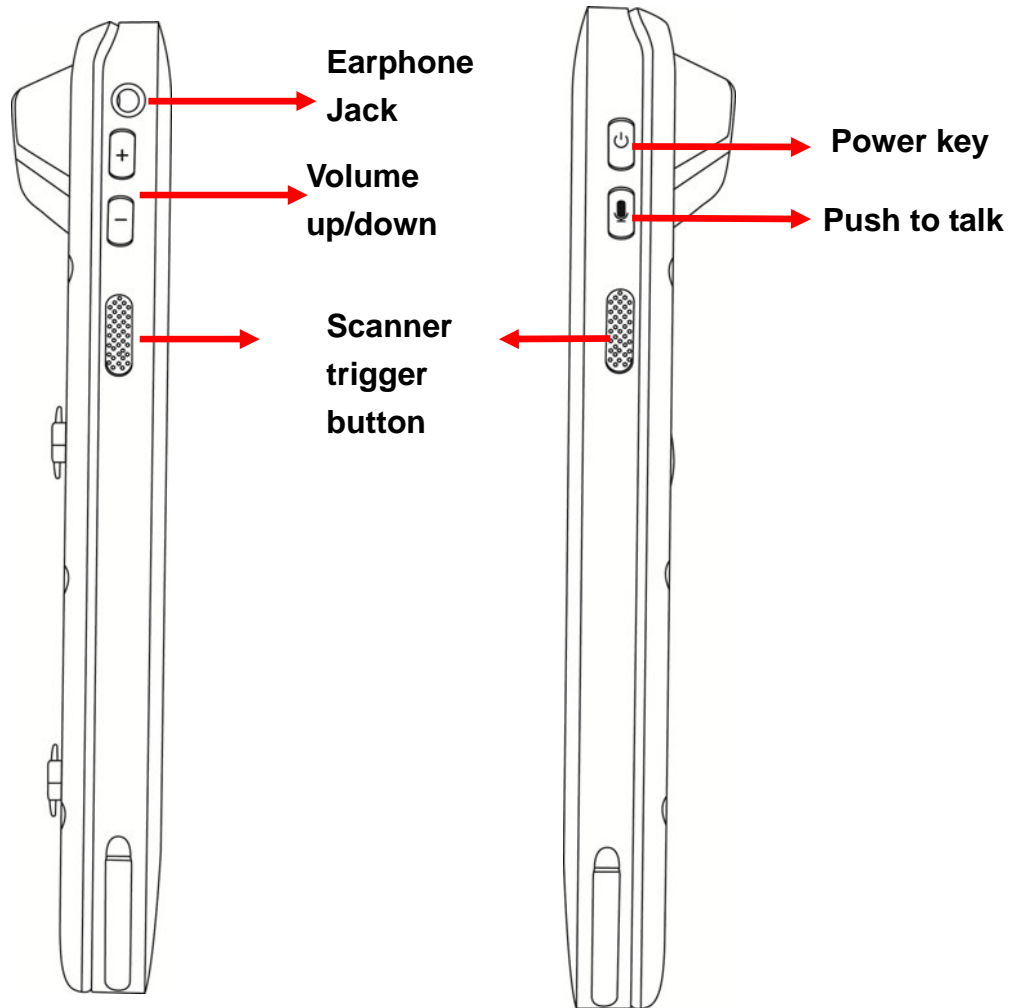
### PA726 Front View



## PA726 Rear View



## PA726 Left and Right View



## 1.3 Specifications

<b>System Features</b>		
<b>CPU</b>	MSM8953 2GHz Octa Core ARM A53 64bits	
Memory	3GB SDRAM 32GB eMMC / MLC Flash (2GB of ROM is completely independent partition that delivers stable processes and flexible programs installation.)	
<b>Expanded slot</b>	MicroSD, up to 128GB	
<b>OS</b>	Android 7.1	
<b>Languages support</b>	English, Simplified Chinese, Traditional Chinese, Japanese, Spanish, German, French and multiple languages	
<b>Display</b>		
Gorilla Glass III with 5-point capacitive touch panel		
4.67" Color 450 cd/m <sup>2</sup> Brightness 720x1280 dots Color Transmissive type's TFT		
<b>Keypad</b>		
4 x Function key	1 x Power key	1 x Push To Talk key
2 x Scan trigger button	2 x Volume key	
<b>Indicator</b>		
1 x LED Indicator		
Vibrator		

**Symbologies**

**1D (SE655)**

- UPC/EAN
  - ◆ UPC-A
  - ◆ UPC-E
  - ◆ UPC-E1
  - ◆ EAN-8
  - ◆ EAN-13
  - ◆ Booklan EAN
  - ◆ Bookland ISBN Format
  - ◆ Decode UPC/EAN/JAN Supplementals
  - ◆ Transmit UPC-A Check Digit
  - ◆ Transmit UPC-E Check Digit
  - ◆ Transmit UPC-E1 Check Digit
  - ◆ UPC-A Preamble
  - ◆ UPC-E Preamble
  - ◆ UPC-E1 Preamble
  - ◆ Convert UPC-E to A
  - ◆ Convert UPC-E1 to A
  - ◆ EAN-8/JAN-8 Extend
  - ◆ UCC Coupon Extended Code
  - ◆ ISSN EAN
- Code 128
- Code 39
- Code 93
- Code 11
- Interleaved 2 of 5
- Discrete 2 of 5
- Codabar
- MSI
- Chinese 2 of 5
- Matrix 2 of 5
- GS1 DataBar(RSS)

<p><b>2D (SE4750)</b> <i>(2D is only available when the 2D imager is on your device )</i></p>	<ul style="list-style-type: none"> <li>■ <b>2D symbologies</b> <ul style="list-style-type: none"> <li>◆ PDF417</li> <li>◆ MicroPDF417</li> <li>◆ Code128Emulation</li> <li>◆ DataMatrix</li> <li>◆ DataMatrixInverse</li> <li>◆ Maxicode</li> <li>◆ QRcode</li> <li>◆ MicroQR</li> <li>◆ Aztec</li> <li>◆ Aztec Inverse</li> <li>◆ Han Xin</li> <li>◆ Han Xin Inverse</li> </ul> </li> <li>■ <b>1D symbologies</b></li> <li>■ <b>UPC/EAN</b> <ul style="list-style-type: none"> <li>◆ UPC-A</li> <li>◆ UPC-E</li> <li>◆ UPC-E1</li> <li>◆ EAN-8</li> <li>◆ EAN-13</li> <li>◆ Booklan EAN</li> <li>◆ Bookland ISBN Format</li> <li>◆ Decode UPC/EAN/JAN Supplementals</li> <li>◆ Transmit UPC-A Check Digit</li> <li>◆ Transmit UPC-E Check Digit</li> <li>◆ Transmit UPC-E1 Check Digit</li> <li>◆ UPC-A Preamble</li> <li>◆ UPC-E Preamble</li> <li>◆ UPC-E1 Preamble</li> <li>◆ Convert UPC-E to A</li> <li>◆ Convert UPC-E1 to A</li> <li>◆ EAN-8/JAN-8 Extend</li> <li>◆ UCC Coupon Extended Code</li> <li>◆ ISSN EAN</li> </ul> </li> </ul>	<ul style="list-style-type: none"> <li>■ Code 128</li> <li>■ Code 39</li> <li>■ Code 93</li> <li>■ Code 11</li> <li>■ Interleaved 2 of 5</li> <li>■ Discrete 2 of 5</li> <li>■ Codabar</li> <li>■ MSI</li> <li>■ Chinese 2 of 5</li> <li>■ Matrix 2 of 5</li> <li>■ Postal Codes <ul style="list-style-type: none"> <li>◆ US Postnet</li> <li>◆ US Planet</li> <li>◆ Transmit US Postal Check Digit</li> <li>◆ UK Postal</li> <li>◆ Transmit UK Postal Check Digit</li> <li>◆ Japan Postal</li> <li>◆ Australian Postal</li> <li>◆ Netherlands KIX Code</li> <li>◆ USPS 4CB/One Code/Intelligent Mail</li> <li>◆ UPU FICS Postal</li> </ul> </li> <li>■ GS1 DataBar (RSS)</li> <li>■ Composite <ul style="list-style-type: none"> <li>◆ Composite CC-C</li> <li>◆ Composite CC-A/B</li> <li>◆ Composite TLC-39</li> </ul> </li> <li>■ Optional : DPM (Direct part marked barcodes)</li> </ul>
---	--	---

<b>Engines</b>	
<b>1D</b>	SE655 : Illumination/AIMER : LED 630 ± 30 nm Optical Resolution : 5 mil (minimum readable bar code module size) Scan Repetition Rate : Nominally 50 scans/second Print Contrast : 20% (minimum print contrast) Ambient Light Immunity Light Source: 4845(lux) ± 5%
<b>2D</b>	SE4750SR (Imager with laser aimer) : Sensor Resolution: 1280 x 960 pixels Illumination Element: 2 x Warm white LED Minimum Bar Code Print Contrast : 20% Ambient Light: Max 107,639 lux (direct sunlight) Wavelength: 655 ± 10 nm Beam divergence: 48.0° horizontal, 38.0° vertical Pulse duration: 1.7ms Maximum power :0.6 mW
<b>Audio</b>	
Speaker , 3.5mm Audio Jack, Receiver, 2 x Microphone	
<b>Regulatory Approvals</b>	
CE, RoHS compliance, FCC, NCC, VCCI,CCC, BSMI	
<b>Communication</b>	
<b>USB</b>	USB 2.0 Host / Client
<b>WLAN</b>	IEEE 802.11 a/b/g/n/ac/d/h/i/k/r/v
<b>PAN</b>	Bluetooth 4.2
<b>WWAN</b>	GSM/GPRS/EDGE 850/900/1800/1900 MHz UMTS 850/900/1900/2100 MHz LTE FDD Band 1/2/3/4/5/7/8/20 TDD Band 38/39/40/41 DL: 150Mbps/ UL: 50Mbps 2x Micro SIM slots
<b>RFID/HF</b>	Frequency: 13.56MHz Tag Support: ISO15693, ISO14443A , ISO14443B Support NFC



<b>GPS</b> (Optional, available on WWAN version)	12 x 12 mm patch antenna Support GPS / GLONASS
<b>Camera and Flash Light</b>	
16 MP CMOS sensor rear autofocus camera with LED flash light 5MP front camera	
<b>External Storage</b>	
Support MicroSD memory card up to 128GB	
<b>Other Sensors</b>	
G-sensor , Light + Proximity sensor , E-Compass, Gyroscope + 3-axis accelerometer	
<b>Power Source</b>	
<b>Standard Battery</b>	Minimum: 3120mAh/3.6V, full charge should over 95% capacity Typical: 3220mAh/3.6V, full charge should over 95% capacity
<b>Extended Battery</b>	Minimum: 4660mAh/3.6V, full charge should over 95% capacity Typical: 4800mAh/3.6V, full charge should over 95% capacity
<b>Enclosure</b>	
<b>Weight</b>	Approximately 287g (including standard battery, without hand strap)
<b>Dimension</b>	Approximately 171.3mm (L) x 29.3mm (H) x 80mm (W)
<b>Environmental</b>	
<b>Operating temperature</b>	-4°F to 122°F (-20°C to 50°C)
<b>Storage temperature</b>	-22°F to 140°F (-30°C to 60°C)
<b>Charging Temperature</b>	32°F to 113°F (0°C to 45°C)
<b>Relative Humidity</b>	5% ~ 95% ( non-condensing )
<b>Drop test to Concrete</b>	1.5 meter, 1.8 meter with bumper
<b>Environmental Sealing</b>	IP65
<b>Vibration and Shock test</b>	MIL-STD-810G, 514.4 process II
<b>Software</b>	
Android 7.1 Support camera API and Camera 2 API.	

Radio type / Description		Transmitter Frequency	Maximum Output Power
<b>GSM</b>	GSM900	880-915MHz	28.5dBm
	DCS 1800	1710-1785MHz	31.5dBm
<b>UMTS</b>	FDD 1	1920-1980MHz	23dBm
	FDD 8	880-915MHz	24dBm
<b>LTE</b>	FDD 1	1920-1980MHz	23dBm
	FDD 3	1710-1785 MHz	24dBm
	FDD 7	2500-2570MHz	23.5dBm
	FDD 8	880-915MHz	24dBm
	FDD 20	832-862MHz	24dBm
	TDD 40	2300-2400MHz	23dBm
<b>WLAN 2.4GHz</b>	IEEE 802.11b	2400-2483.5MHz	16dBm
	IEEE 802.11g	2400-2483.5MHz	16dBm
	IEEE 802.11n	2400-2483.5MHz	15dBm
<b>WLAN 5GHz</b>	IEEE 802.11a	5180-5240MHz	15dBm
		5260-5320MHz	15dBm
		5500-5700MHz	15dBm
		5745-5825MHz	10.5dBm
	IEEE 802.11n	5180-5240MHz	15dBm
		5260-5320MHz	15dBm
		5500-5700MHz	15dBm
		5745-5825MHz	10.5dBm
	IEEE 802.11ac	5180-5240MHz	15dBm
		5260-5320MHz	15dBm
		5500-5700MHz	15dBm
		5745-5825MHz	10.5dBm
<b>Bluetooth</b>	Bluetooth	2400-2483.5MHz	13.5dBm
<b>RFID</b>	NFC	13.56MHz	<25dBuA/m

**Note:**

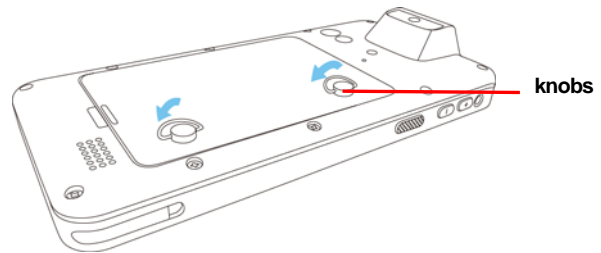
The device is restricted to indoor use only when operating in the 5150 to 5350 MHz frequency range.

	AT	BE	BG	HR	CY	CZ	DK
	EE	FI	FR	DE	EL	HU	IE
	IT	LV	LT	LU	MT	NL	PL
	PT	RO	SK	SI	ES	SE	UK
	IS	LI	NO	CH	TR		

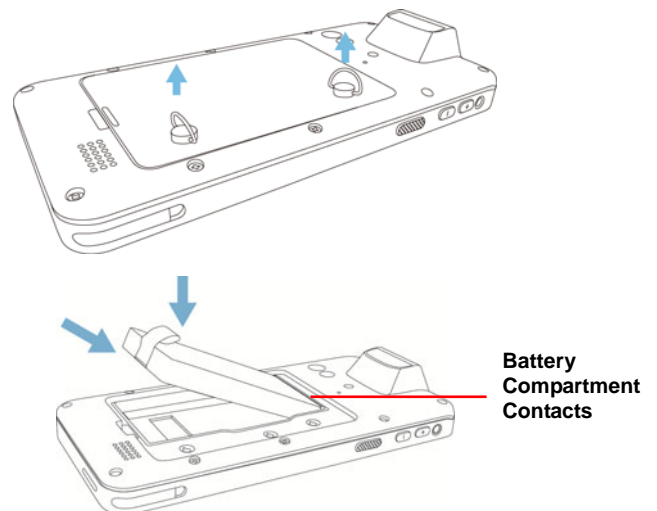
## 1.4 Getting Started

### 1.4.1 Installing the Battery

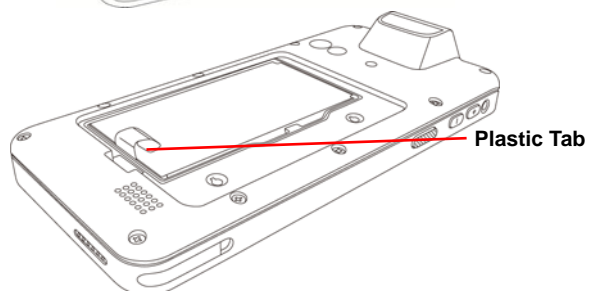
1. To loosen the two knobs on the battery cover by turning counterclockwise.  
And pull the two knobs up to remove the battery cover.



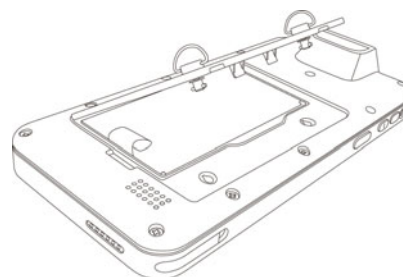
2. Slide and position the battery pack, making sure the battery contacts are aligned with the contacts in the compartment.



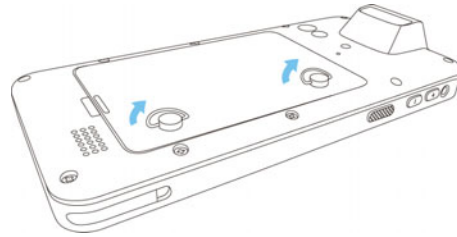
3. Use your thumb to snap the battery in place.



4. Put back the battery cover.



5. To tighten the two knobs on the battery cover by turning clockwise.



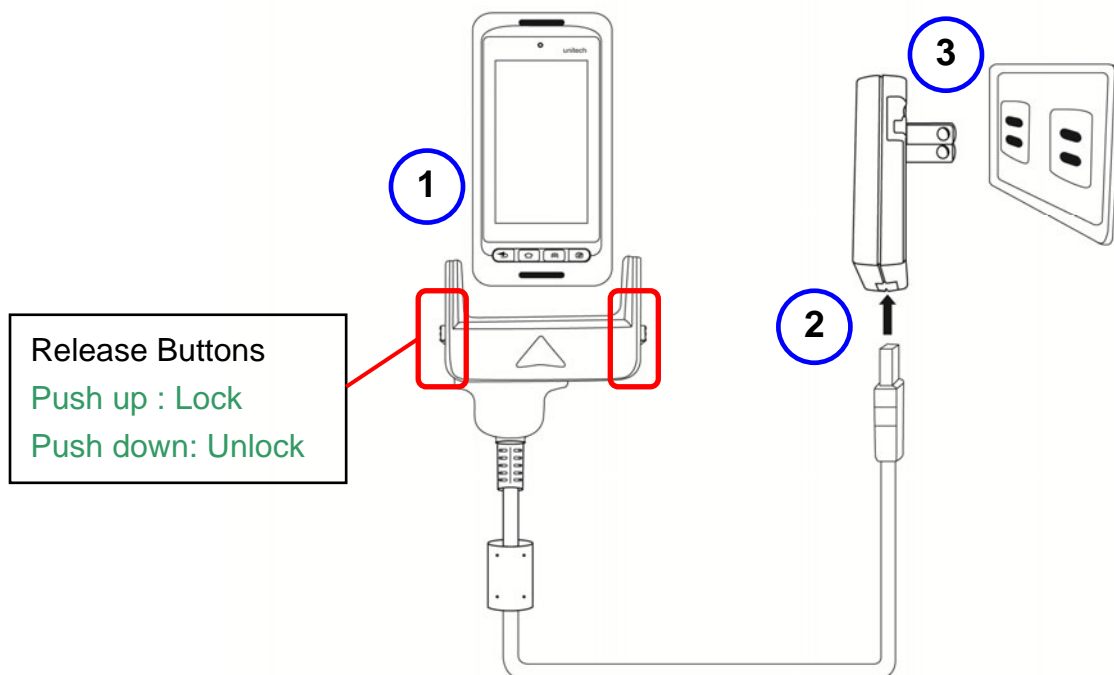
**NOTE:** After installing the battery, make sure the battery cover is securely closed, or you may be unable to turn ON the terminal.

**WARNING!** There is a risk of fire and burns if the battery pack is handled improperly. DO NOT disassemble, crush, puncture, short external contacts, or dispose the battery pack in fire or water. DO NOT attempt to open or service the battery pack. Dispose of used batteries according to local recycling guidelines in your area.

## 1.4.2 Charging the Battery

Before using the terminal for the first time, you need to charge it for about 24 hours. After that, you can charge the terminal for 4 hours to recharge the battery to full capacity. Charge the terminal using the USB charging cable or the docking station.


1. After PA726 is connected to the charging cable, push up the release buttons on the both sides of the USB charging cable to lock PA726.
2. Use USB charging cable to connect the AC adapter.
3. Plug the AC adapter cord into an electrical outlet.



### 1.4.3 Turning on the terminal for the first time

After you have initially charged your device for about 24 hours, the device is ready to be used. You can now start up your device. You can then set up the languages, WiFi setting, and date and time.

#### Power-On Button

Turn ON your device by pressing the power button  on the right side of the terminal.

### 1.4.4 Checking the LED status

	Status	LED	Description
Terminal	Scan	Green light blinks once	Successful reading
	Message	Blue light blinks	Message received
	Power	Solid Red light	Being charged
		Solid Green light	Fully charged

#### Checking the Battery Status

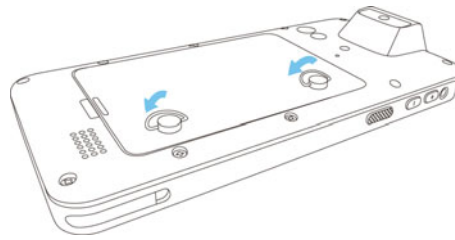
If the battery level becomes low in the course of normal use, a status icon appears on the device screen indicating low or very low battery status. In both cases, connect PC with USB to back up your data, and then recharge your device as soon as possible.

## 1.4.5 Using the Micro SD/ Micro SIM Card

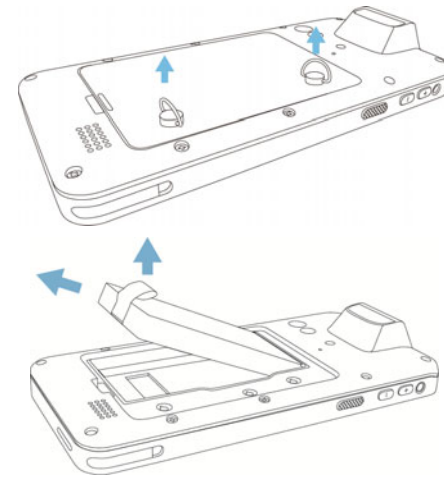
The PA726 has Micro SD/ Micro SIM card slots inside the battery compartment.

### Inserting a Micro SD/ Micro SIM Card

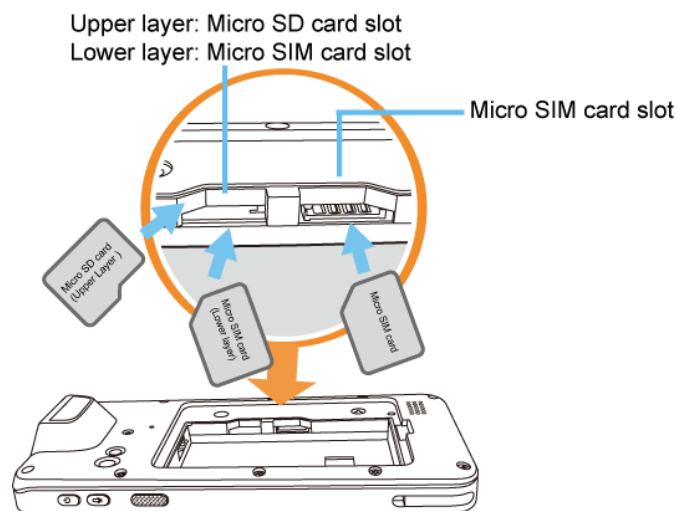
1. To loosen the two knobs on the battery cover by turning counterclockwise.  
And pull the two knobs up to remove the battery cover.



2. Remove the battery cover and the main battery.

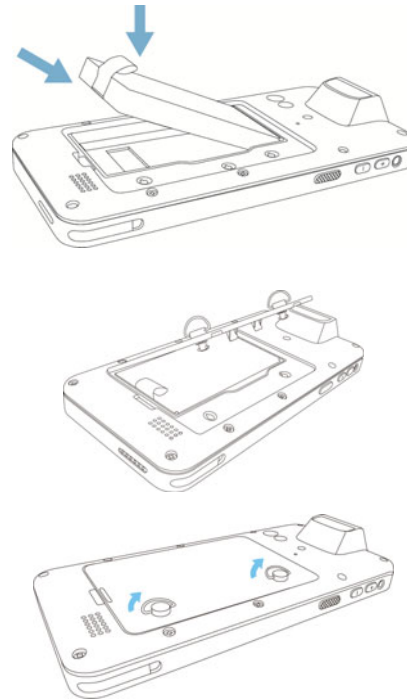


3. Now you can access the Micro SD card slot and two Micro SIM card slots.





4. Put the battery back into the battery cover.
5. Replace the battery cover.  
To tighten the two knobs on the battery cover by turning clockwise.





## Removing the Micro SD/ Micro SIM Card

1. To loosen the two knobs on the battery cover by turning counterclockwise.
2. Remove the battery cover and the main battery.
3. Press the card in and release. The card pops out.
4. Remove the card from the slot.
5. Put the battery back into the battery cover.
6. Replace the battery cover.
7. To tighten the two knobs on the battery cover by turning clockwise.

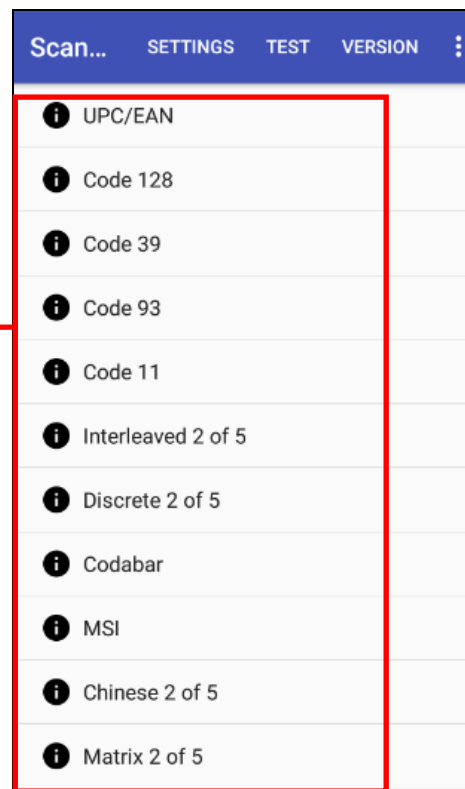
## Chapter 2 – Installation & Operation

### 2.1 Barcode Setting

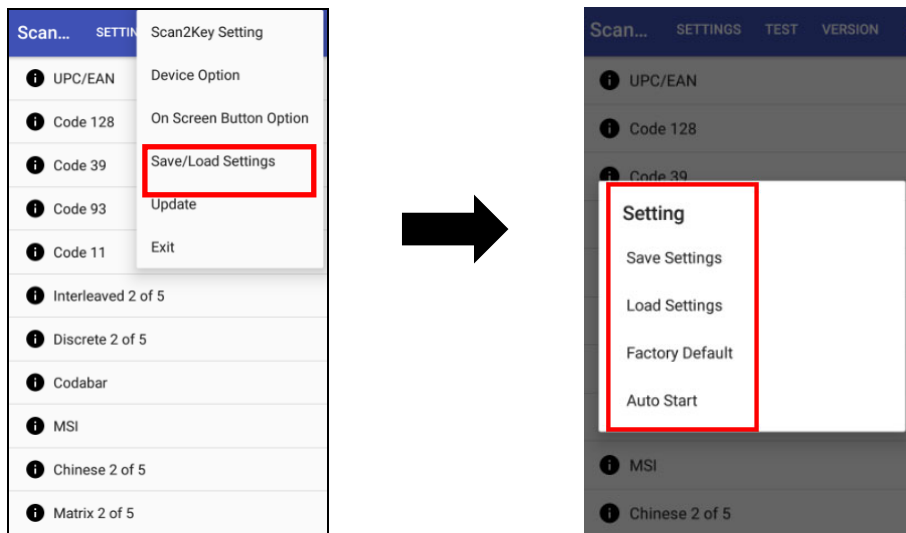
1. Tap  go to APPS, and tap  **ScanService**.
2. You are now enter the ScanService application. There are three main items : **Settings, Test and Version**.

#### 2.1.1 Settings

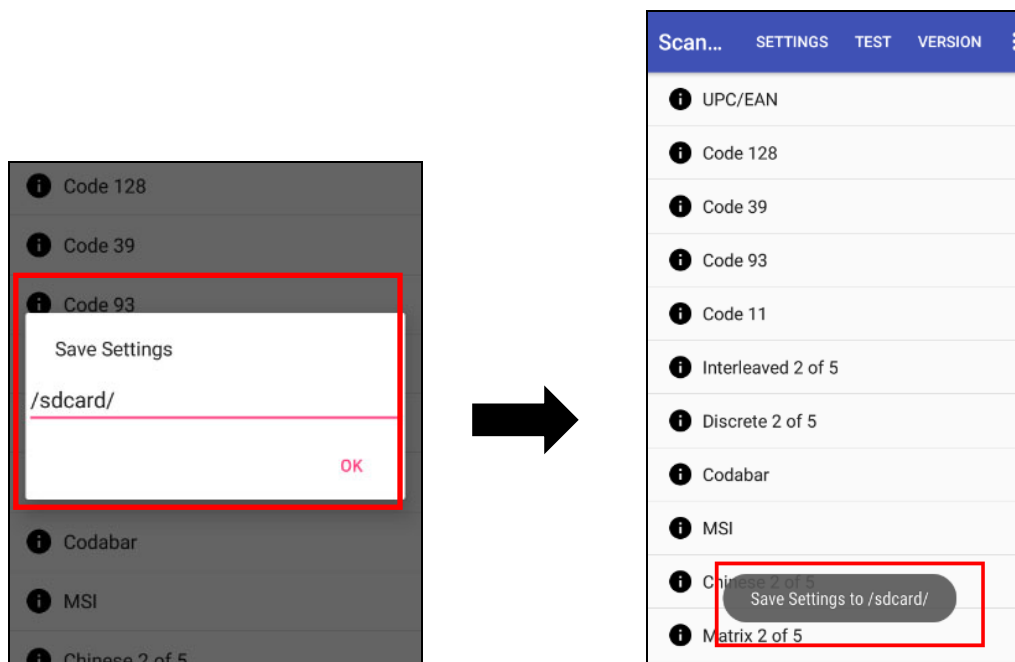
Tap the default barcode symbologies for a different application



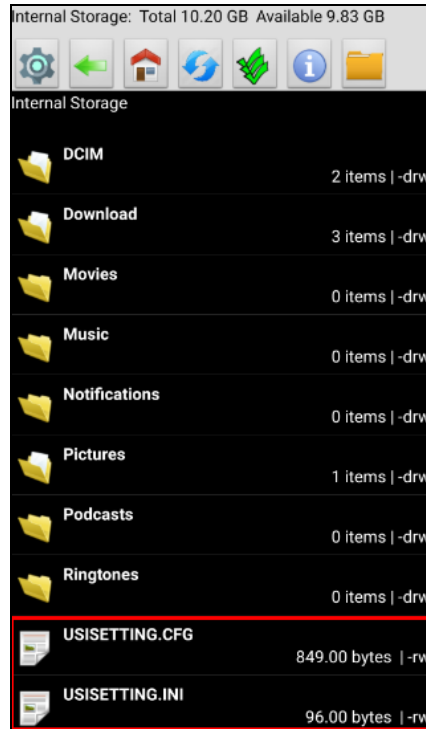
- For **Save / Load Settings**, and **Factory Default** section,  
To save data, Please tap  and then tap **Save / Load Settings**.




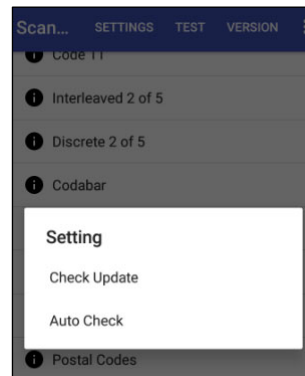
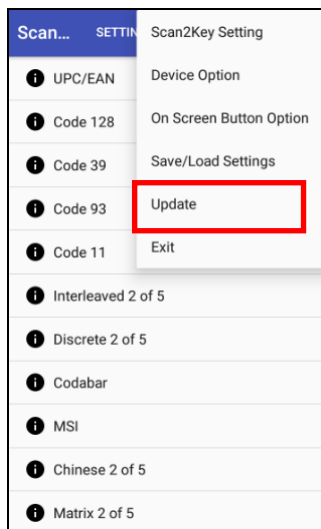
Please tap **Save Settings – input path - OK**



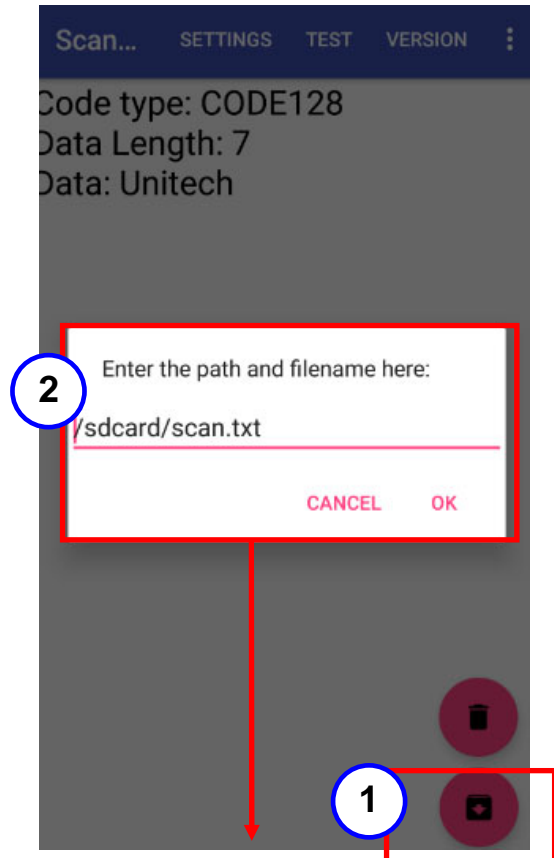
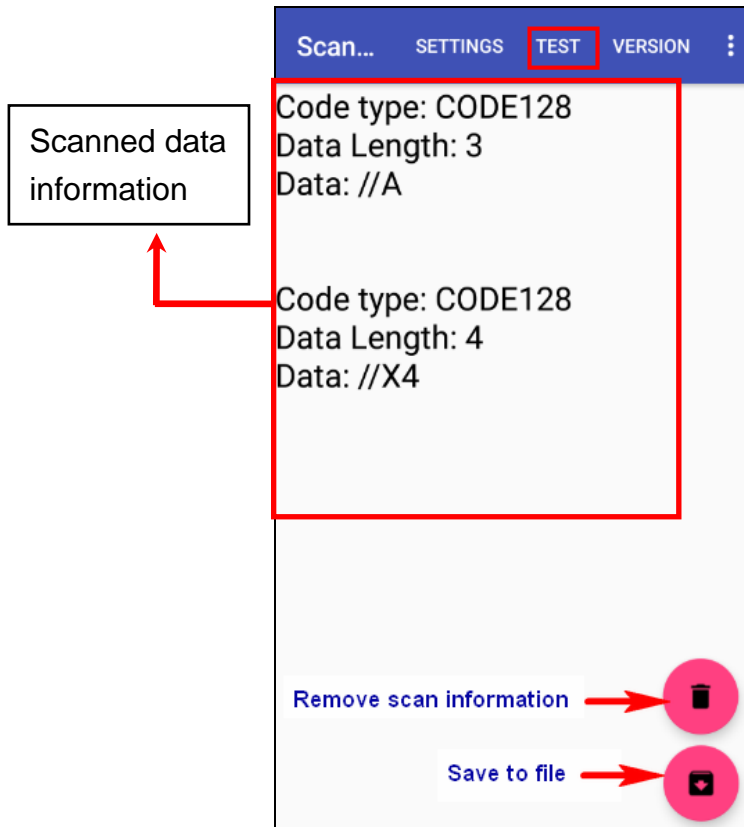
The save setting data is stored in File Manager. (Please see [3.2 File Manager](#) )




- To update scan service, please tap  and then tap **Update**.



## 2.1.2 Test

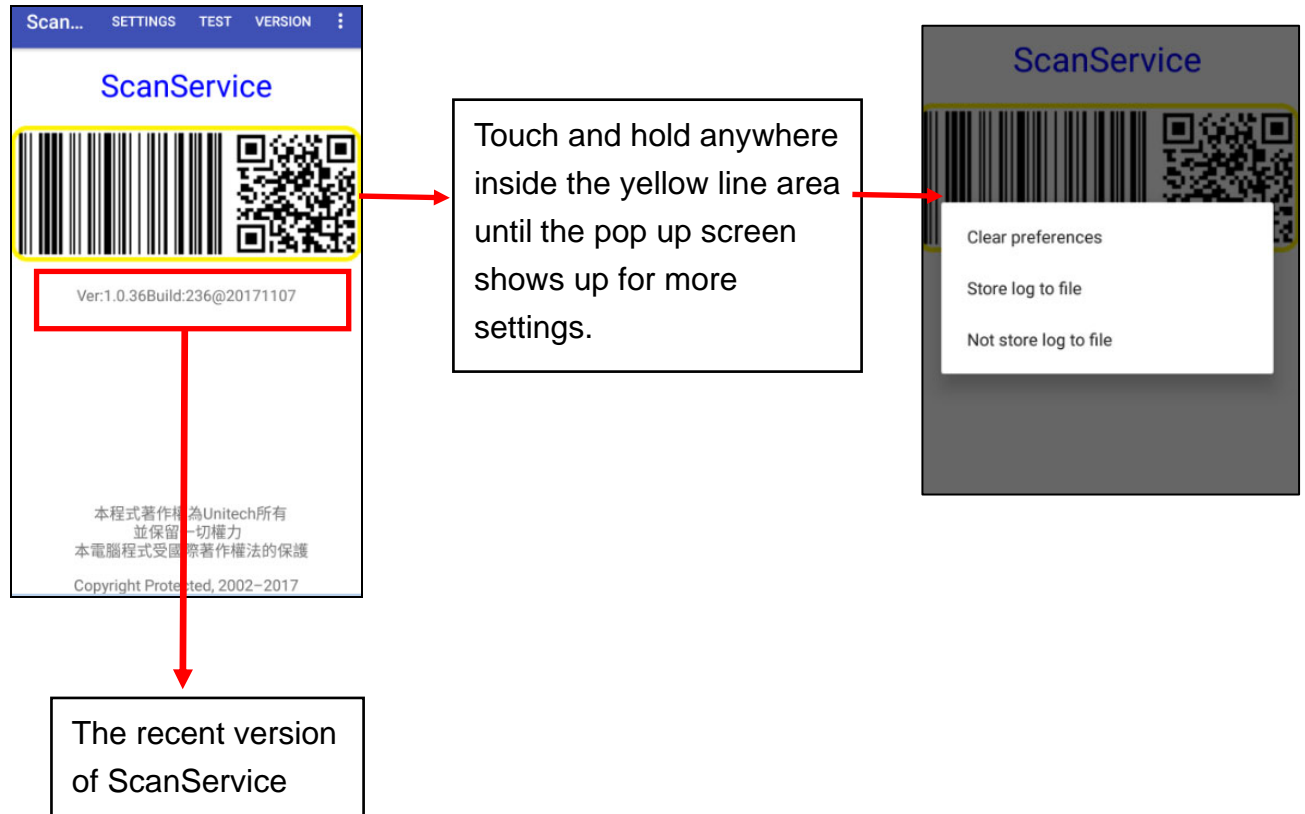


- ① Tap 
- ② Choose the path and filename to save the scanned data. And press "OK"

## 2.1.3 Version

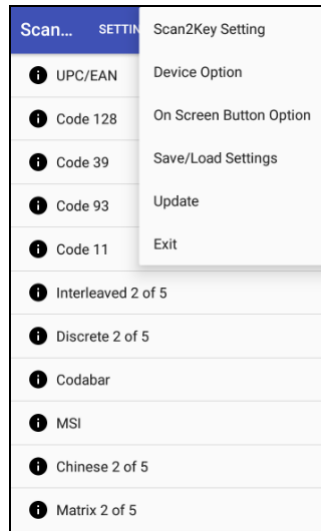
Show the recent version of ScanService.

Tab  to **Exit**.



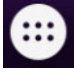

## 2.1.4 More Options

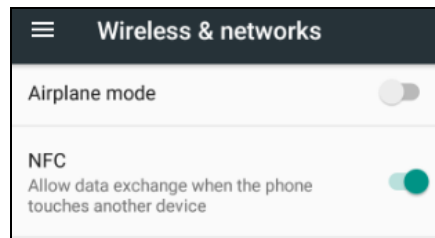
For more options and settings, please tap .



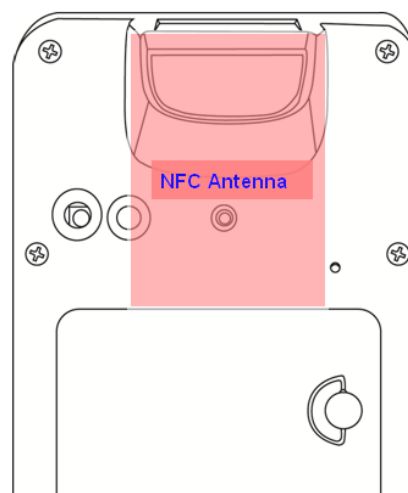
## 2.2 HF Setting

---

1. Tap  go to APPS, and tap  **Settings** and then under **Wireless & networks**, tap **More...**
2. Tap **NFC** check box to Enable / disable NFC function.
3. If enable / disable NFC check box, it will also enable / disable Android Beam too.



4. Make sure that both devices are unlocked and have NFC turned on. If the other device has an Android Beam option, make sure it is also turned on.
5. Make sure that the NFC antenna area of PA726 and the other phone's NFC area are close to one another. Experiment by slightly moving the phones until a connection is made. Tap the screen.





## 2.3 UHF Setting

---

Current model is not available.


## 2.4 MSR Setting

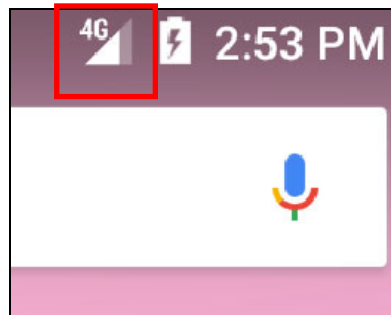
---

Current model is not available.


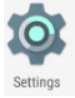
## 2.5 WWAN Setting

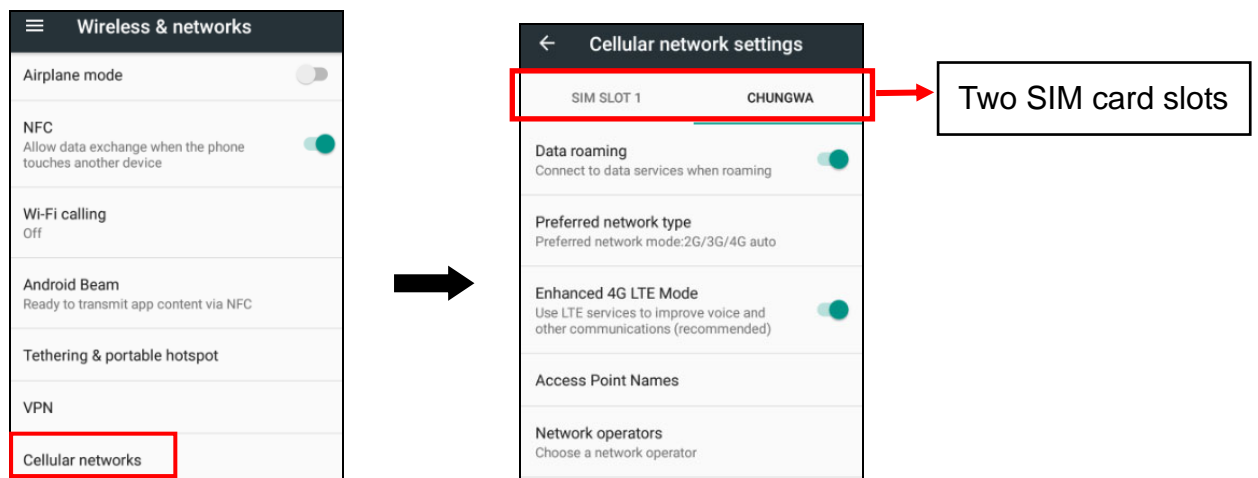
1. Turn off the terminal to insert the SIM card.  
**Note :**
  - For the instruction, please refer to [1.4.5 Using the Micro SD/SIM Card](#).
  - It only applies to the device which supports WWAN.
2. Turn on the terminal, 4G signal will show at the top of the screen.

If you insert 3G SIM card into PA726, the icon  is displayed on the status bar.

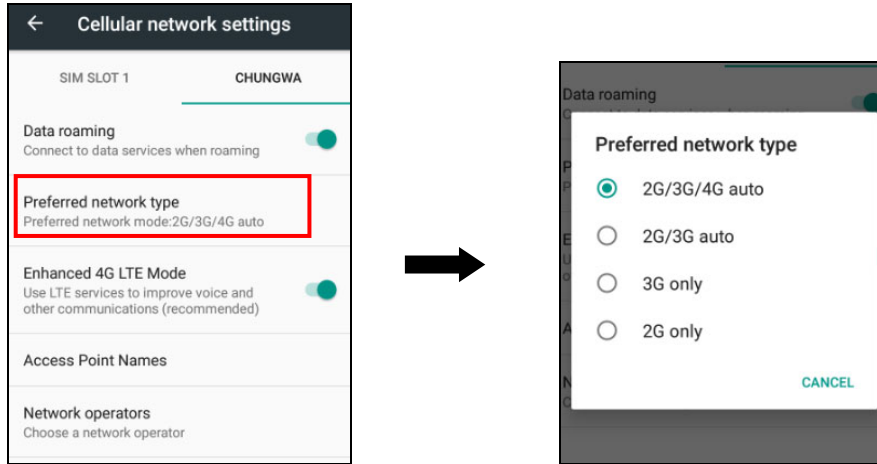


### 2.5.1 Mobile Network Settings


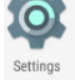
1. Tap  go to APPS, and tap  **Settings** and then under **Wireless & networks**, tap **More**, and tap **Cellular networks**.

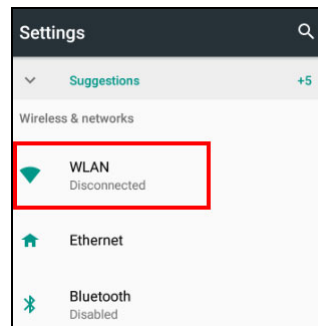


2. You can have more **Cellular network settings** in this section.  
For network type, please tap **Preferred network type**.

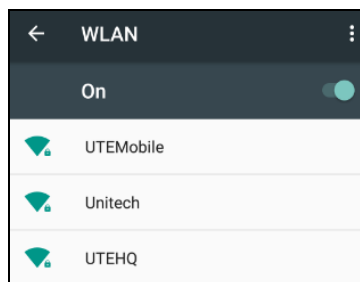


## 2.6 WLAN Setting

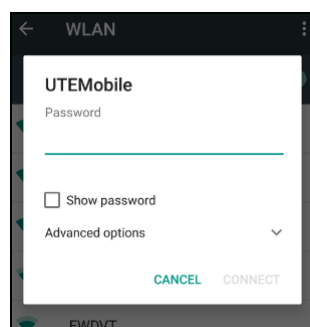
1. Tap  go to APPS, and tap  **Settings** and then under **Wireless & networks**, Tap **WLAN**.



2. To see available networks, turn Wi-Fi **ON**. And tap to choose the available networks.




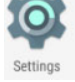
3. Choose the available networks, and enter the Password and tap **Connect**.

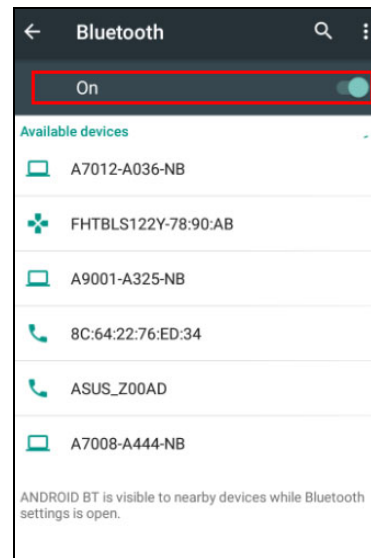
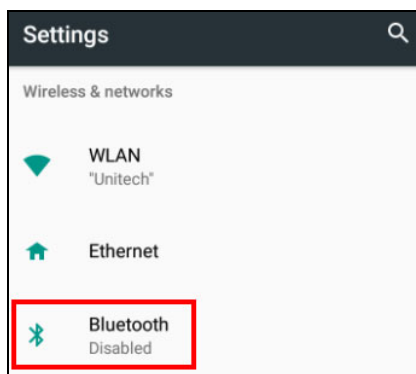



4. If the wireless network that you want is not listed, tap **+ Add network** to manually add it.

5. When enabled, the Wi-Fi icon  is displayed on the status bar.

## 2.7 PAN Setting

1. Tap  go to APPS, and tap  **Settings** and then under **Wireless & networks**, Tap **Bluetooth**.
2. Tap **ON / OFF** to enable / disable Bluetooth (PAN).  
To pair the available device, turn Bluetooth **ON** to choose the available device.



3. When enabled, the Bluetooth icon  is displayed in the status bar.

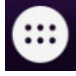
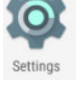
When the Bluetooth device is connected, you'll see in the status bar.

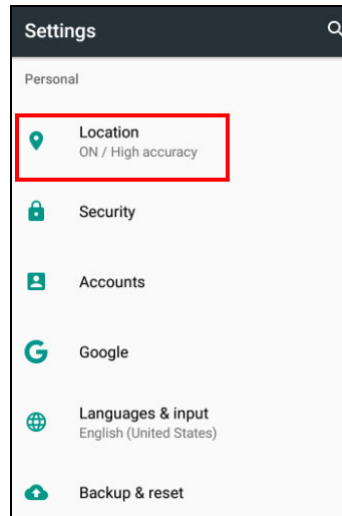
Normally, you can easily reconnect your device by switching on Bluetooth on PA726, and then turning on the device.

However, you might have to connect manually if PA726 has been used with another Bluetooth device.

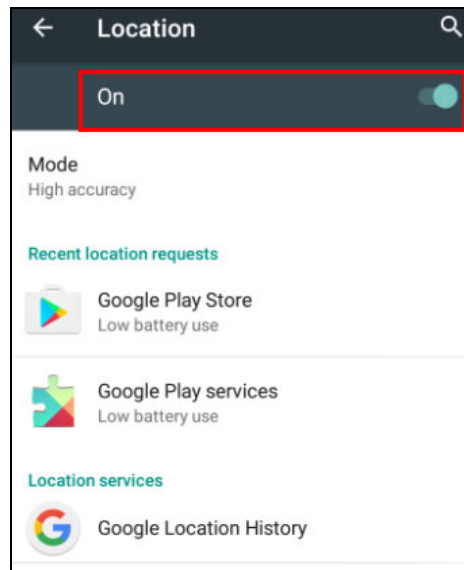
## 2.8 GPS Setting

---

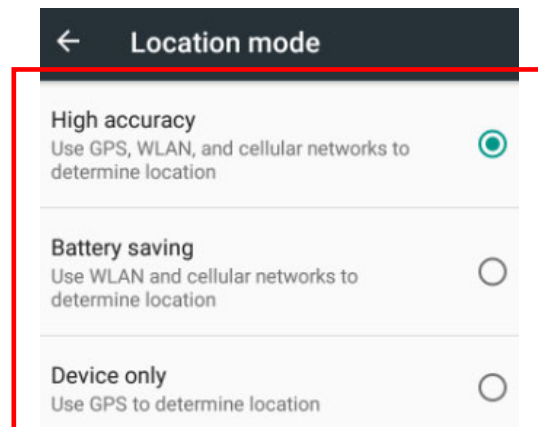
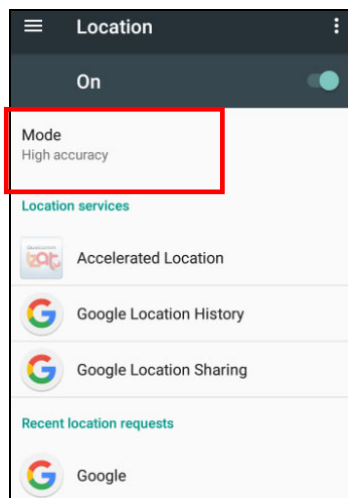
1. Tap  go to APPS, and tap  **Settings**
2. Go to **PERSONAL** , Tap **Location**.



3. Tap **ON/OFF** for the permission to use your location information.



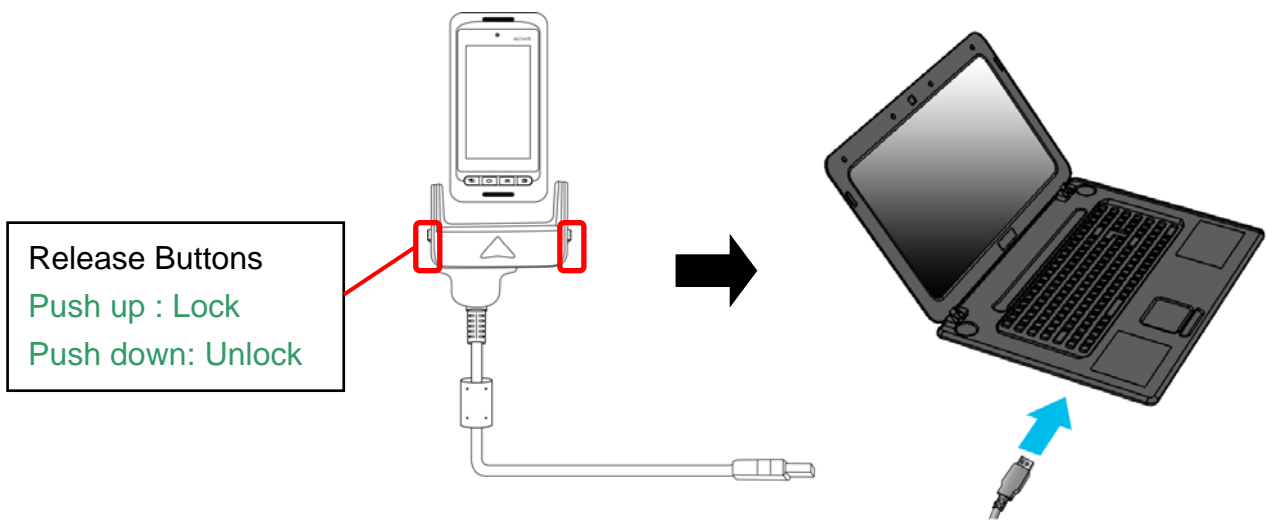
4. Tap **Mode** for more location mode settings.



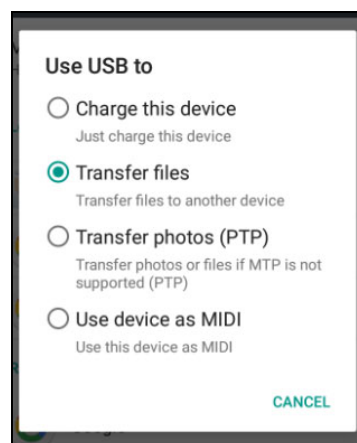
- **High accuracy :**  
Use GPS, WLAN and cellular networks to determine location
- **Battery saving :**  
Use WLAN and cellular networks to determine location
- **Device only :**  
Use GPS to determine location

## 2.9 PC Setting

1. Connect PA726 to your computer with the USB cable. Your computer will recognize it is USB charging.




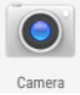
2. Slide down from top, the system will show as follow picture, then you can select File transfers.



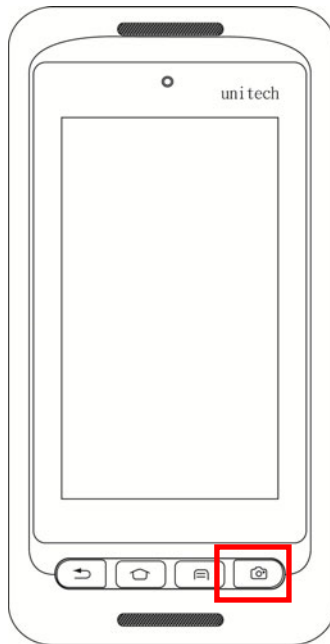


## 2.10 Camera Setting

---

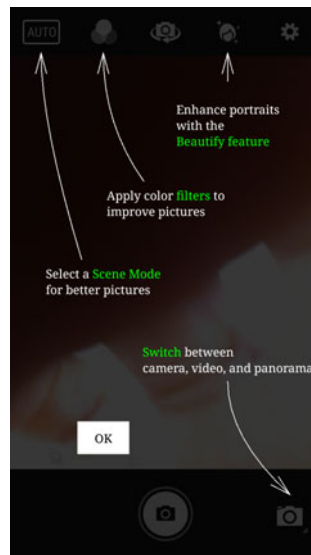
1. Tap  go to APPS, and tap  **Camera.**

Or use the camera button as below :

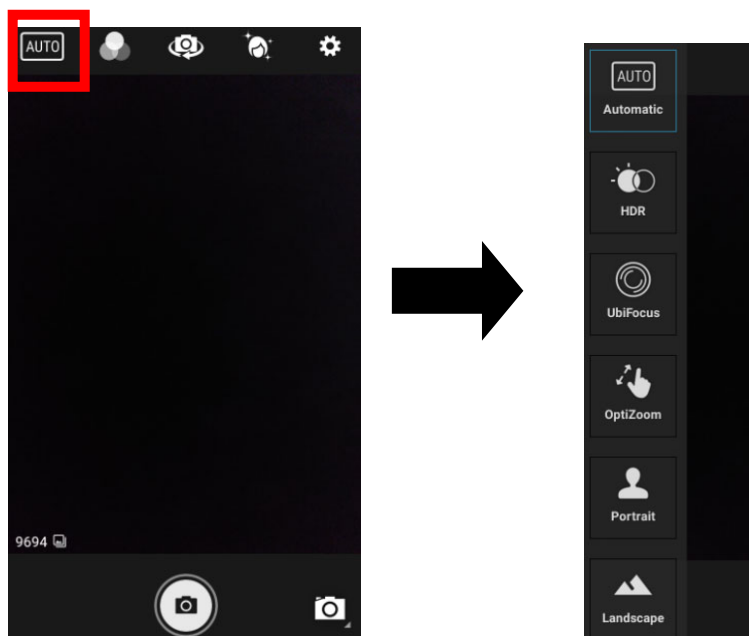


## 2.10.1 Camera Settings

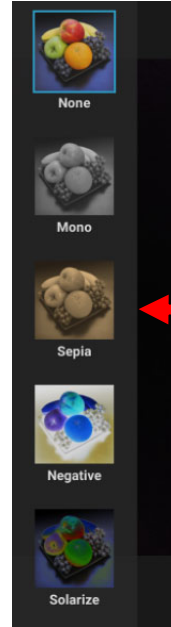
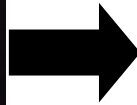
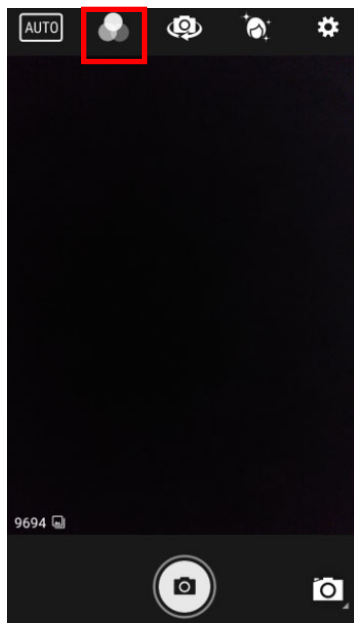
For the first time turn on, the screen will show a brief introduction about camera settings.



### 2.10.1.1 Scene Mode Setting

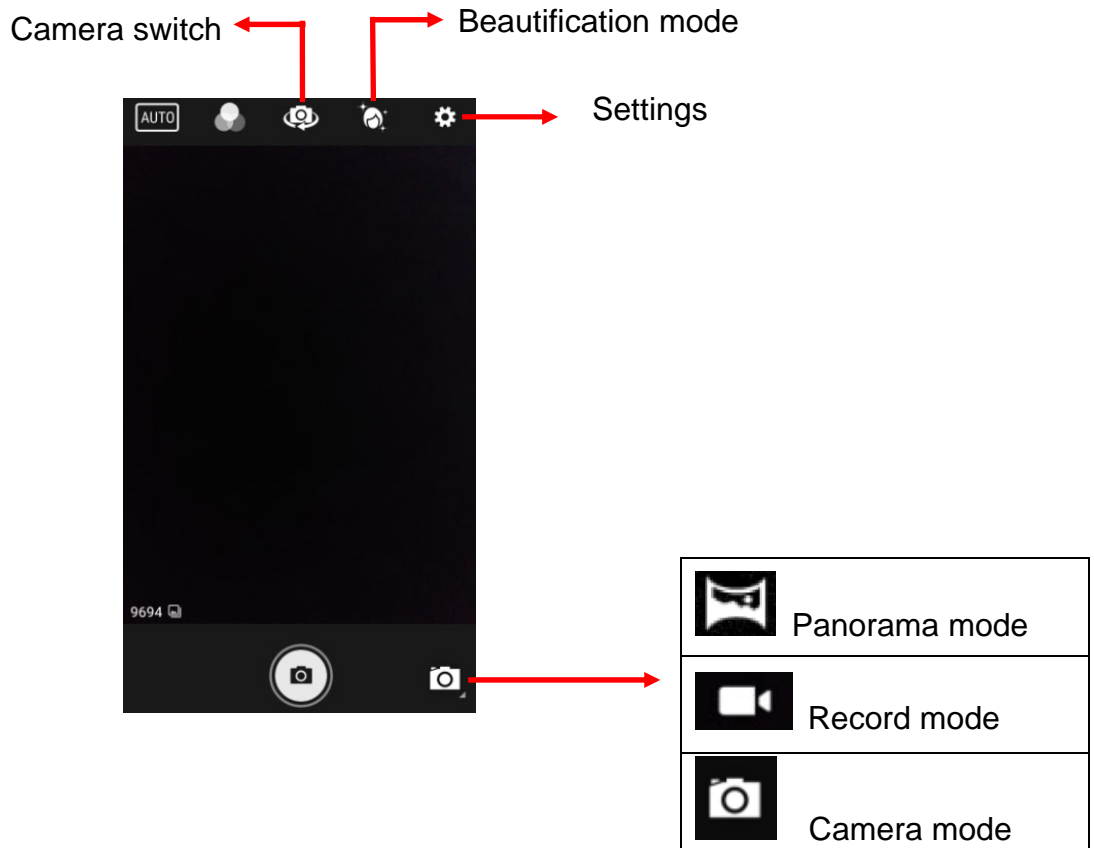


### 2.10.1.2 Camera filter effects

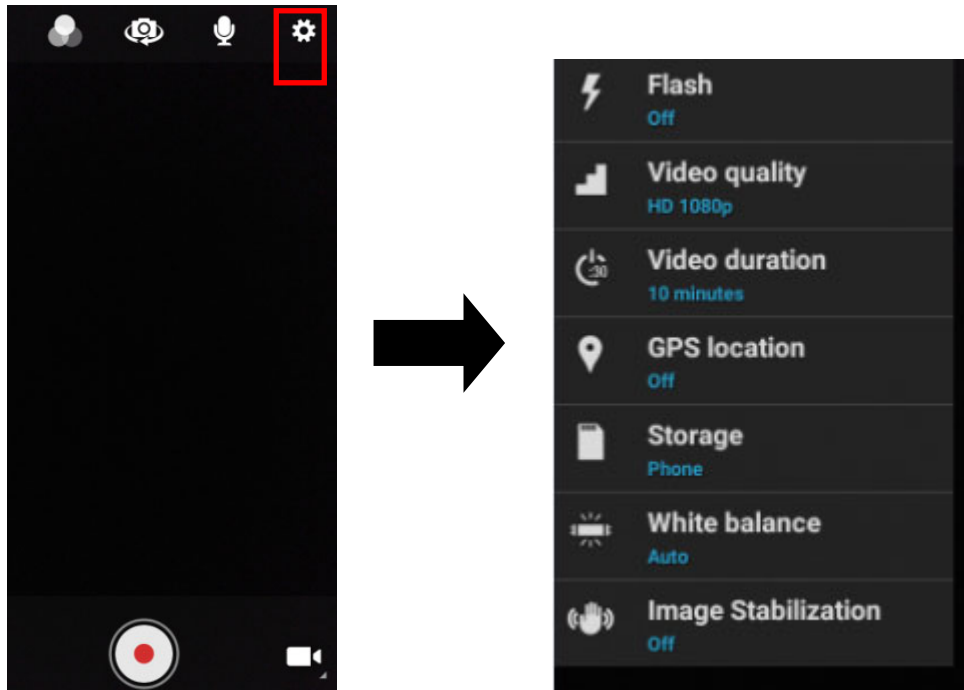


Scroll down for more.

### 2.10.1.3 Other settings



## 2.10.2 Record Settings

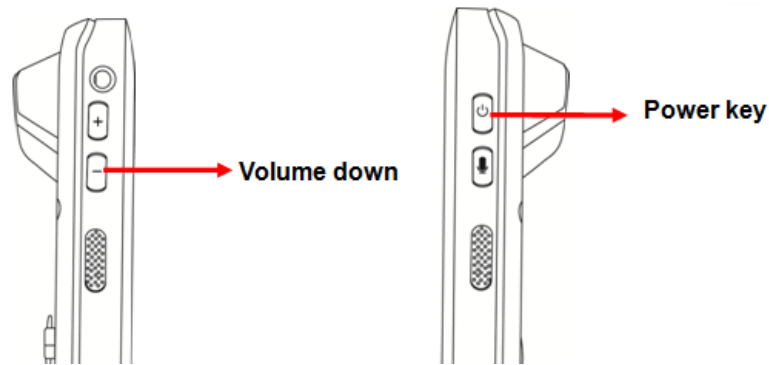


## 2.11 Performing a Hardware Reset

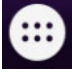

---

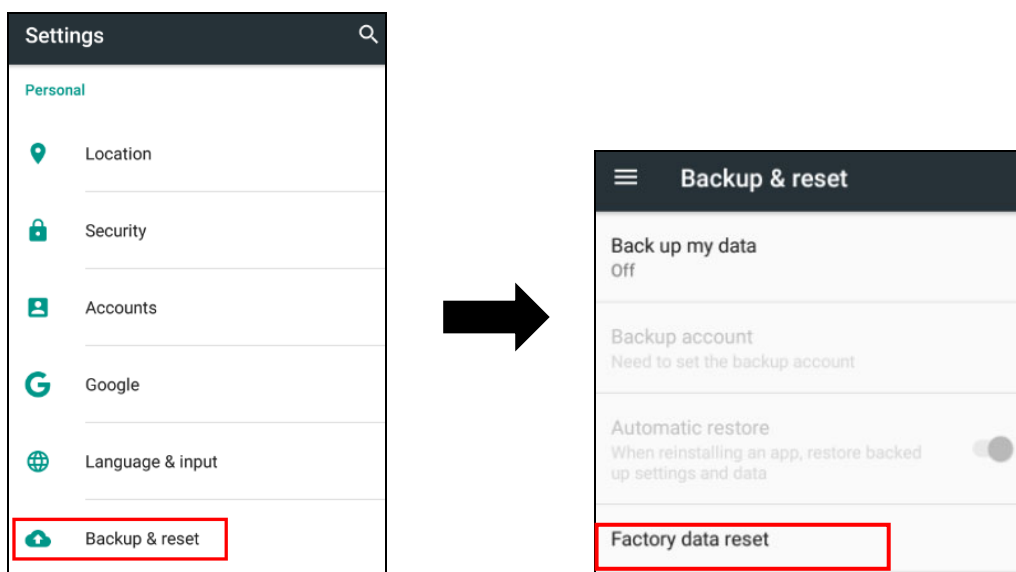
You may have to perform a reset if the device freezes (i.e., the terminal no longer responds to the buttons or tapping on the screen).

Long press **Power button** and **Volume down button** simultaneously to make the device restart the system within 20 seconds.

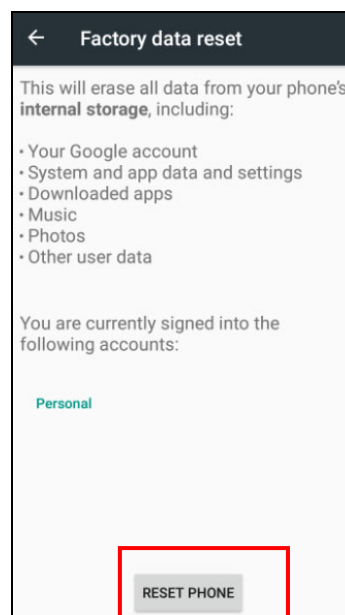


## 2.12 Performing Factory data reset

1. Tap  go to APPS, and tap  **Settings**.
2. Tap **Backup & reset**, you can reset to factory default when you select **Factory data reset**, it will erase all include enterprise folder.




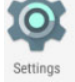
3. Tap **RESET PHONE** to start the factory data rest.

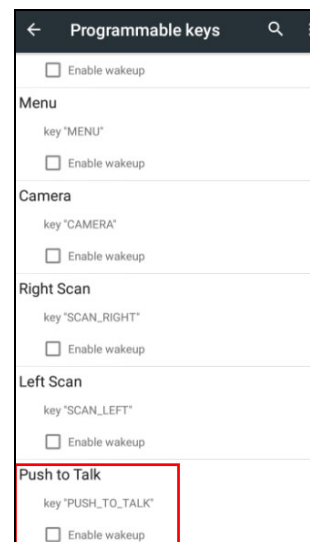
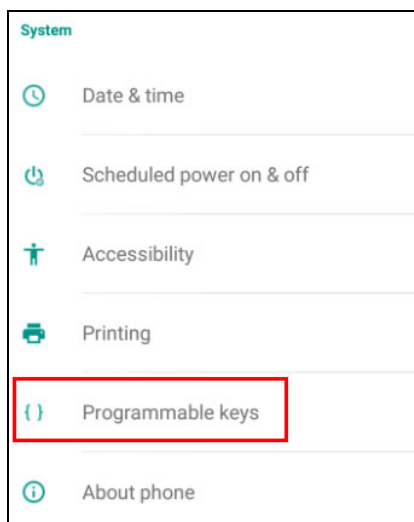


## 2.13 Programmable Keys

The PA726's keys can be programmed for users to be able to perform different functions or applications.

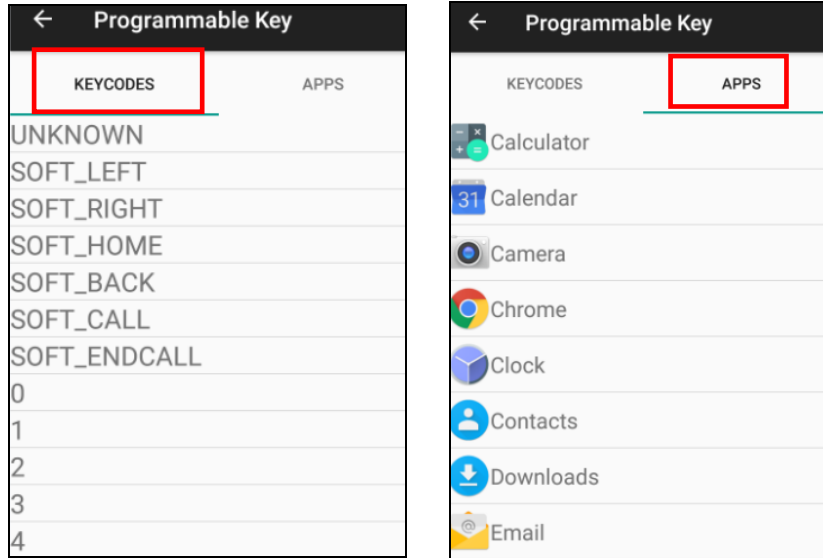
### 2.13.1 Programming a key

1. Tap  go to APPS, and tap  **Settings**.
2. Go to SYSTEM, Tap **Programmable keys**, and select the keys to remap. (ex. tab *Push to Talk* )

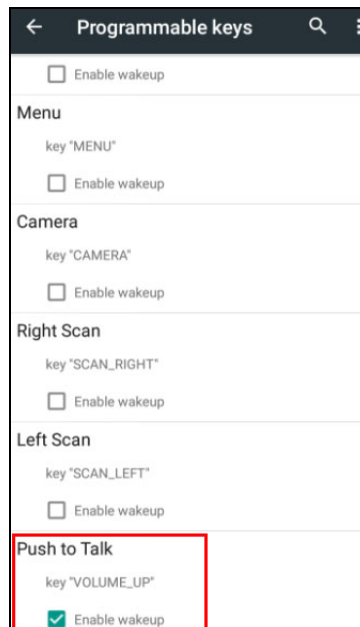




3. Tab one of **KEYCODES** or **APPS** that lists the available functions or applications and select one shortcut to map to the key.  
(ex. tab **VOLUME\_UP**)

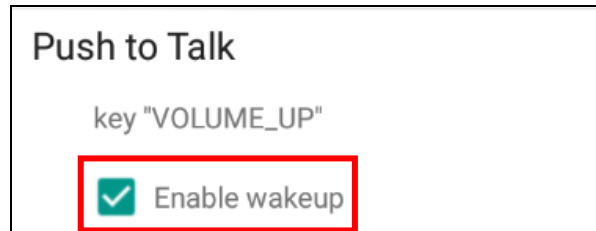


4. The key is successfully mapped to a key code.



## 2.13.2 Enable/ Disable wakeup

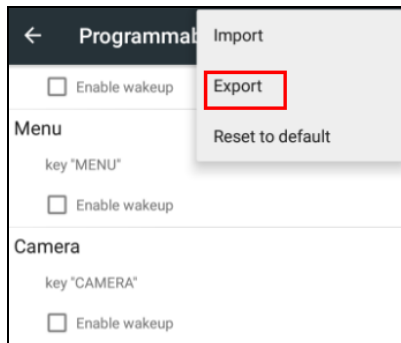
After the key is mapped to a key code, check the **Enable wakeup** checkbox to wake PA726 by pressing the programmable keys when PA726 is in sleep mode. **Note:** *This function only applies to KEYCODES.*




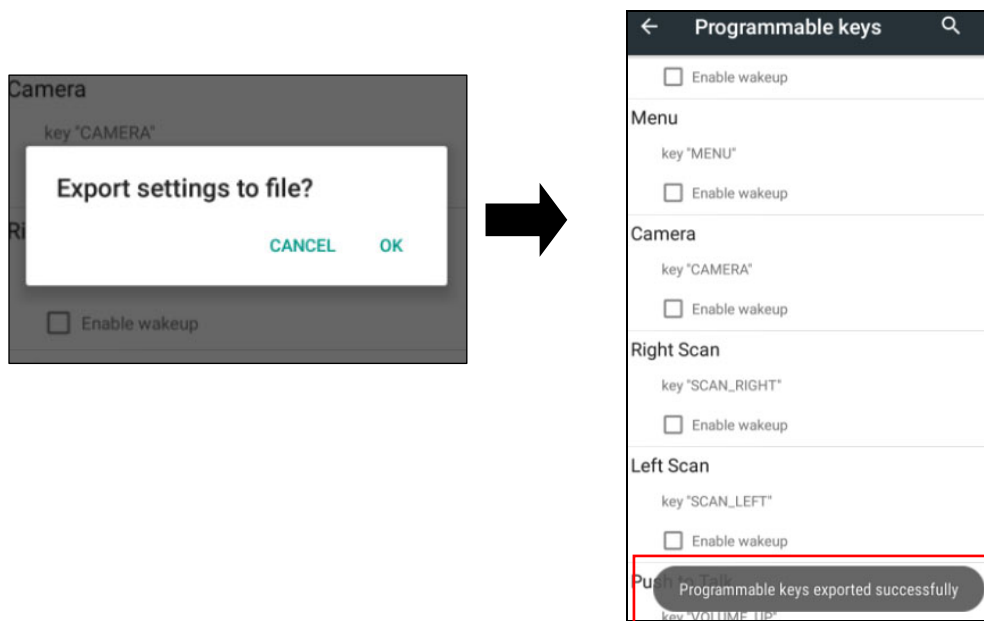
## 2.13.3 Export / Import a Programmable Key Configuration file

### ■ Export file

1. Tab 
2. Select **Export**



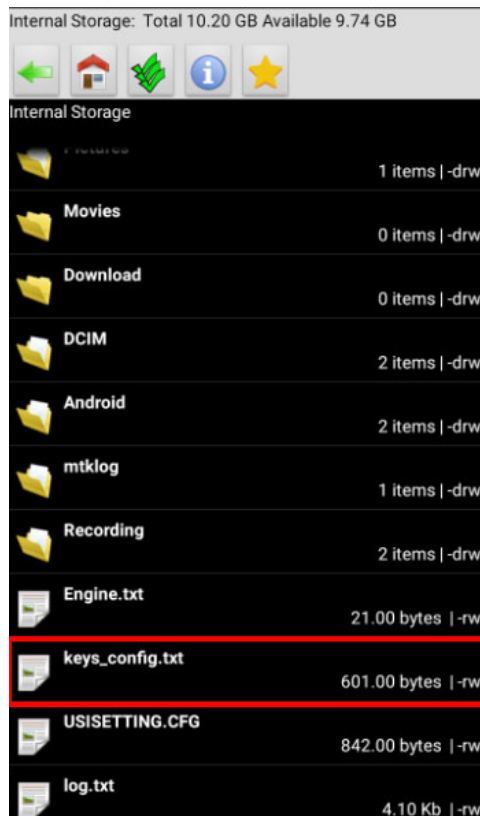
3. Tab **OK**  Programmable keys exported successfully



The Programmable Key configuration can be exported to a text file or imported into PA726.

**Note:** The configuration file (*keys\_config.txt*) is saved in File Manager.

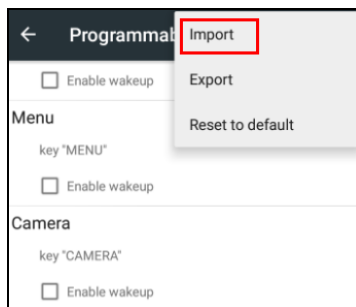
(For File Manager setting, please refer to [3.2 File Manager](#))




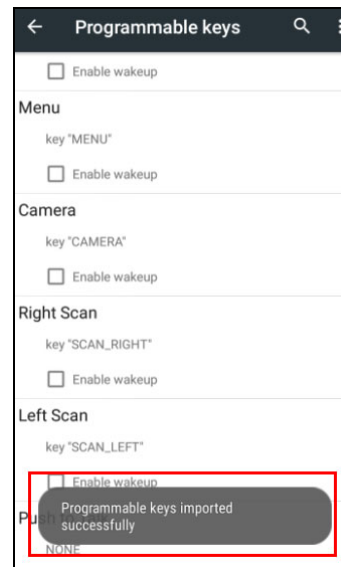
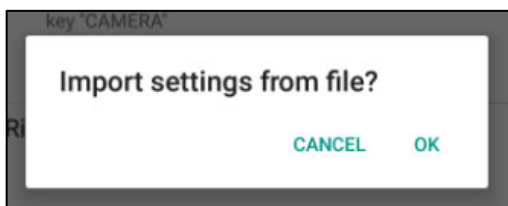
## ■ Import file

Before importing the file, please make sure the configuration file (keys\_config.txt) is in File Manager.

1. Tab 
2. Select **Import**

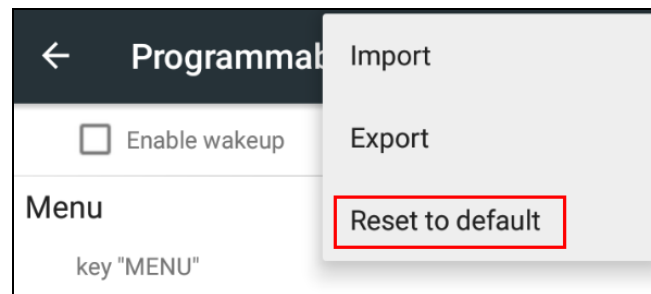


3. Tab **OK**  **Programmable keys imported successfully**  
The new configuration will be applied immediately after import.



## ■ Reset default

1. Tap 
2. Select **Reset to default**

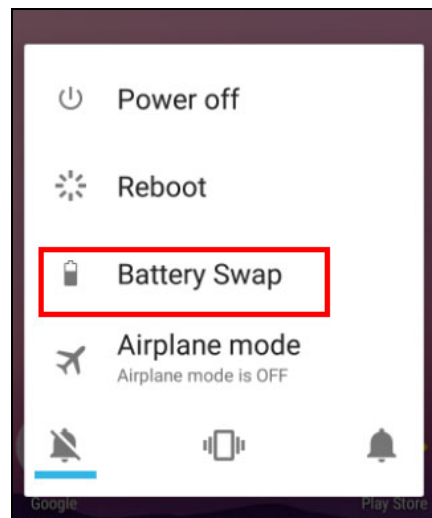


## 2.14 Battery Swap

---

Please follow the steps for the battery swap.

1. Long press power button until you see the pop up window and tap **Batt swap**.



2. The LED indicator will start showing solid red light. **Please swap the battery after the LED red light goes off.** Please do not turn on PA726 during the battery swap.
3. When the battery swap is done, you can press the power button to restart PA726 again.

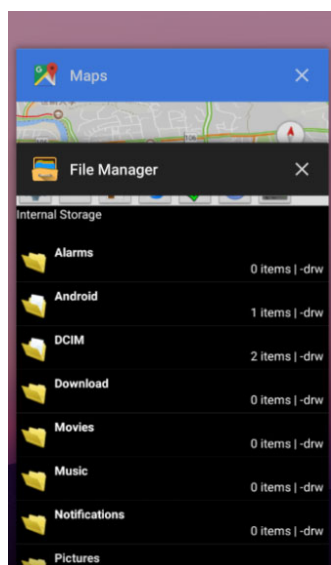
*Note :Please see [1.4.1 Installing the Battery](#) for more information.*

## 2.15 Split Screen

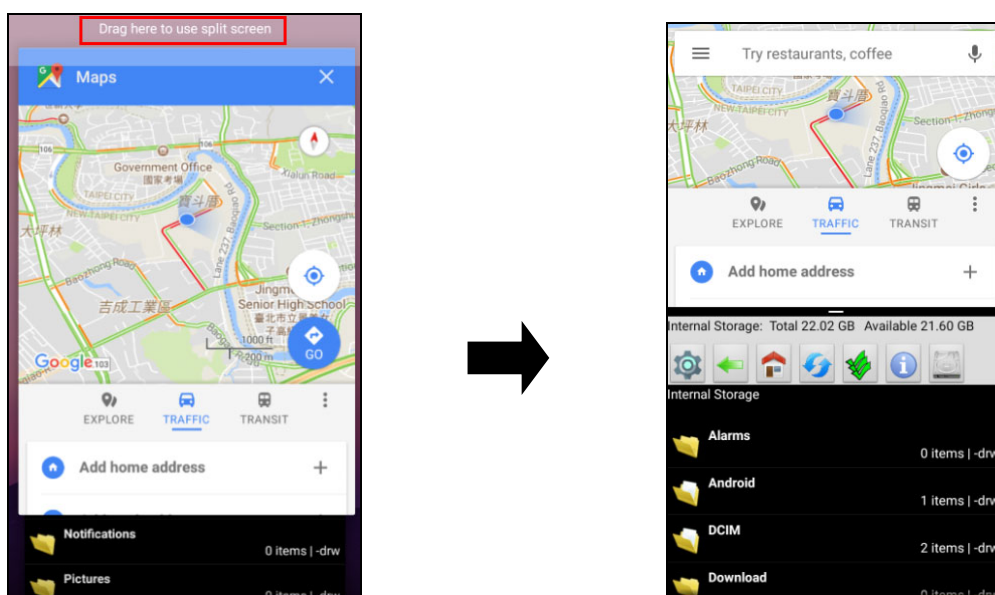
Split screen function allows you to have two apps work side by side on the same screen. Please follow the steps to enable split screen multitasking.

*Note:* Some apps may not work with split-screen.

1. Hold **Home screen button** until you see the apps on the screen.

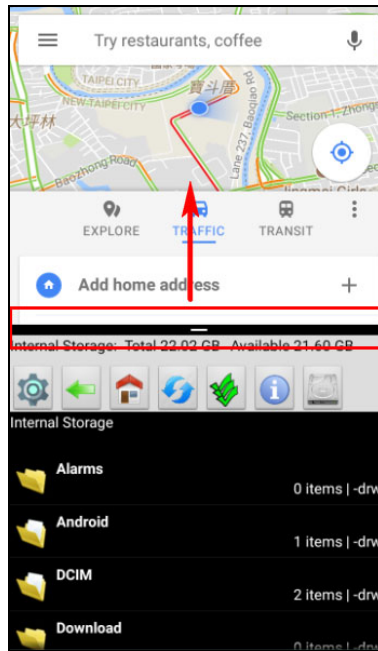


2. Drag one of these apps you would like to use, and drag it up to the screen. The bottom half of screen shows the rest of apps.







3. To cancel split screen, drag the middle black bar up to the screen.



## Chapter 3 – Introduction to Applications

### 3.1 Scan Service

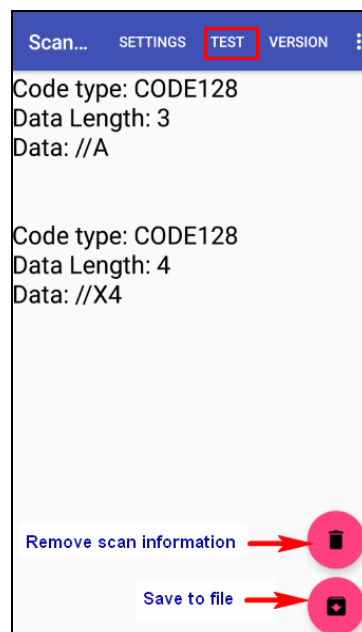
---

1. Tap  go to APPS, and tap  **ScanService**.
2. You are now enter the ScanService application. There are three main items : **Settings, Test and Version**.

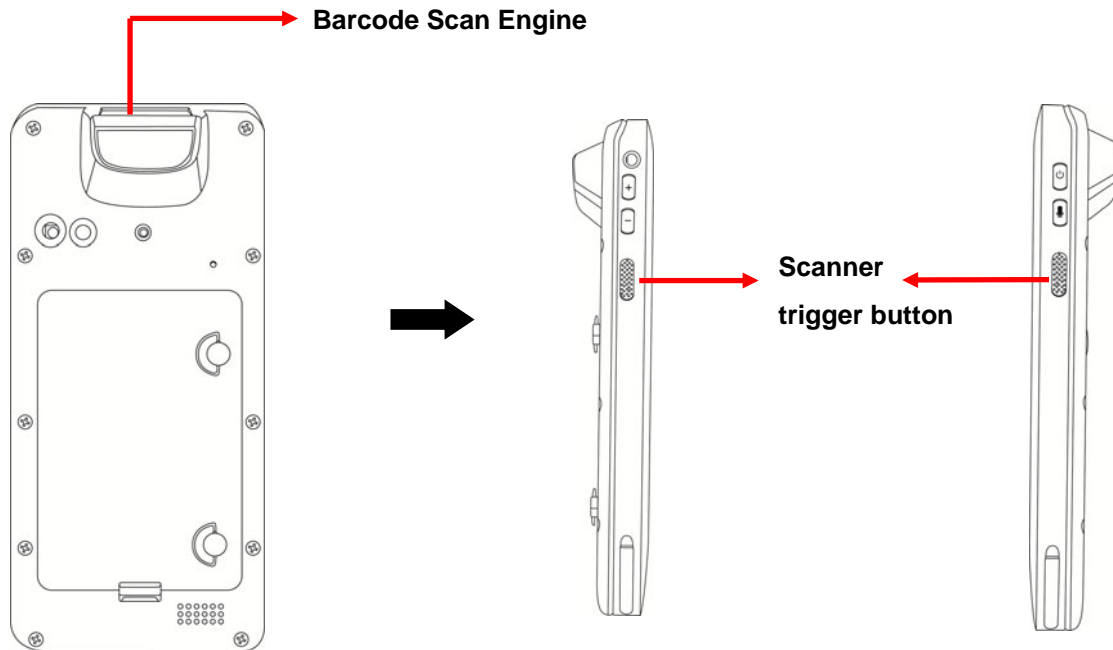
**Note :** For more Scan Service settings, please refer to [2.1 Barcode Setting](#).

#### 3.1.1 Settings

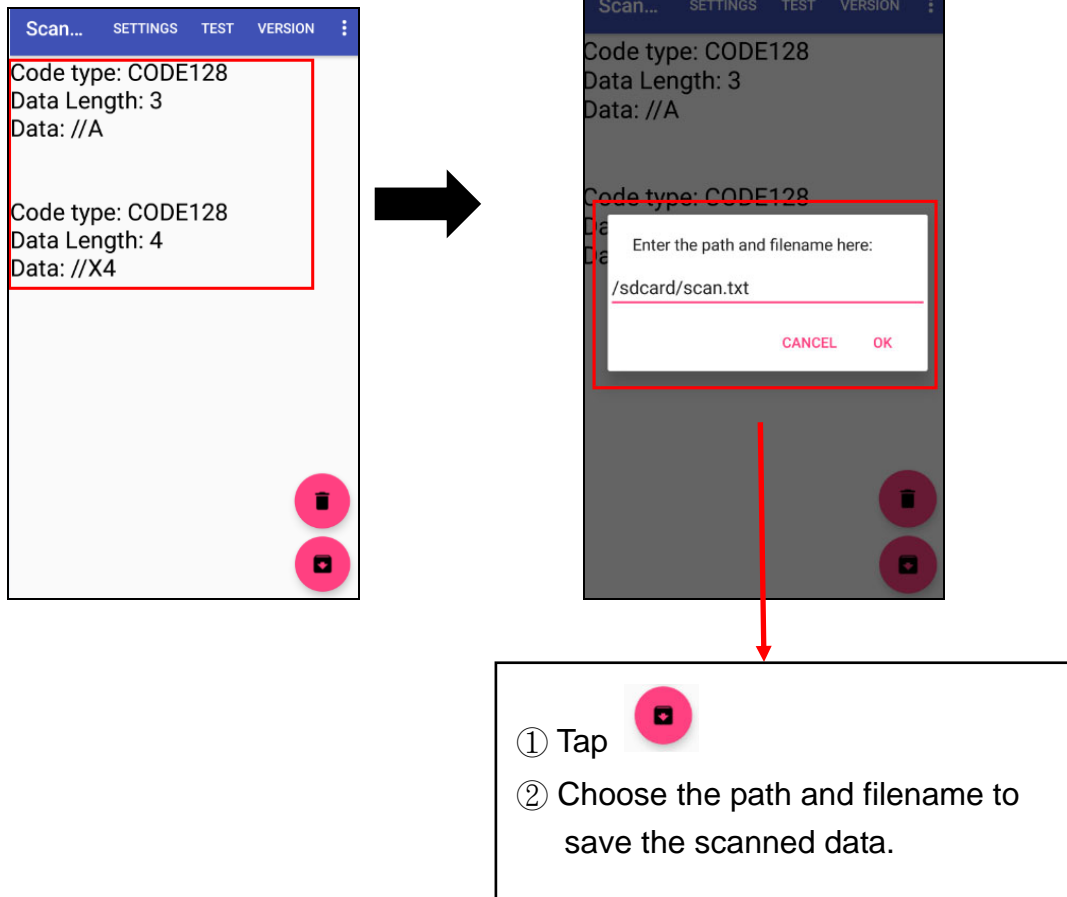
1. Scanned data information / Save / Clear all scanned data.  
Tap **Test** to start scanning barcodes.




2. Aim the Barcode Scan Engine to the barcode and press one of two scan trigger buttons.

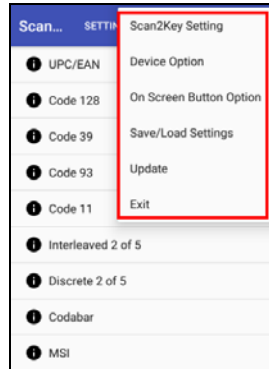


3. After scanning the barcodes, the barcode information is as shown below.

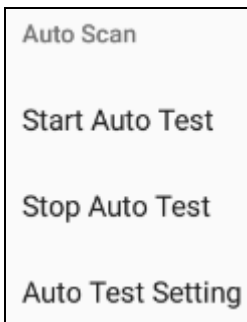


■ More Options

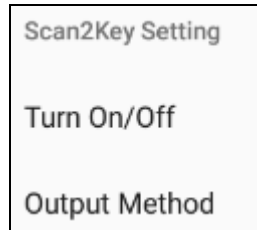
For more options and settings, please tap .



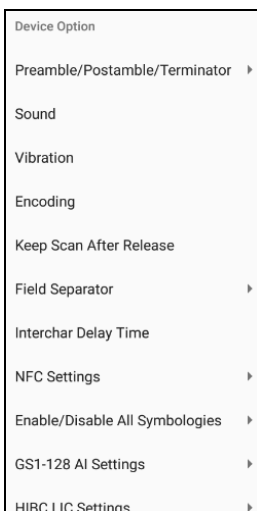
■ Auto Scan



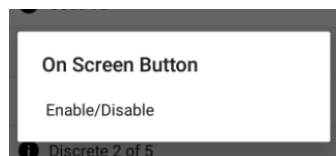
■ Scan2key Setting



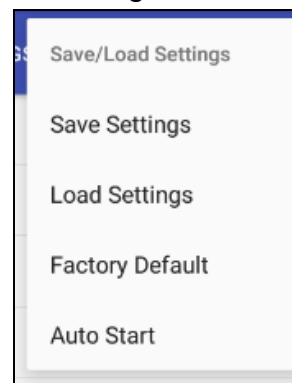
■ Device Option



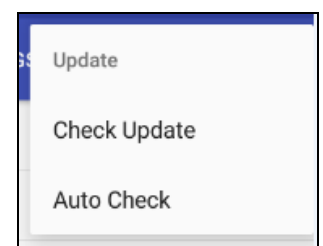
■ On Screen Button Option



■ Save / Load Settings



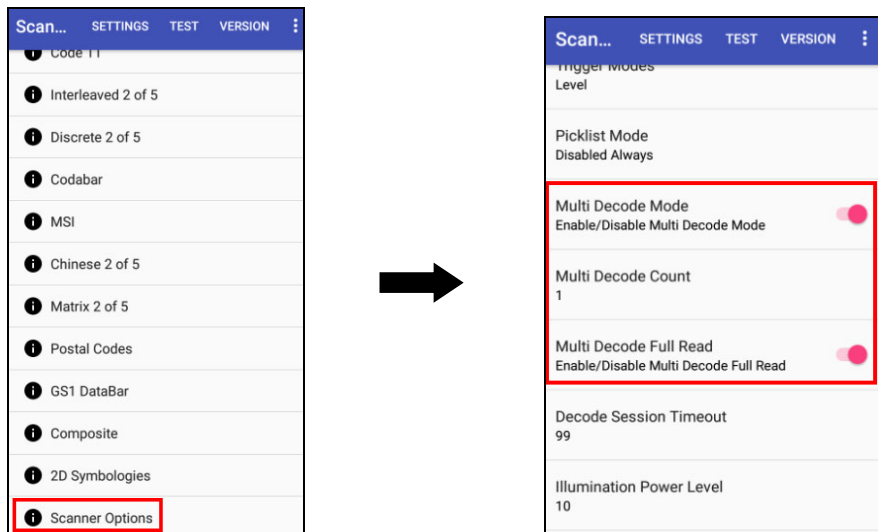
■ Update



### 3.1.2 Multi Decode Scan


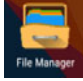
Multi decode scan function allows users to scan multiple barcodes at once.

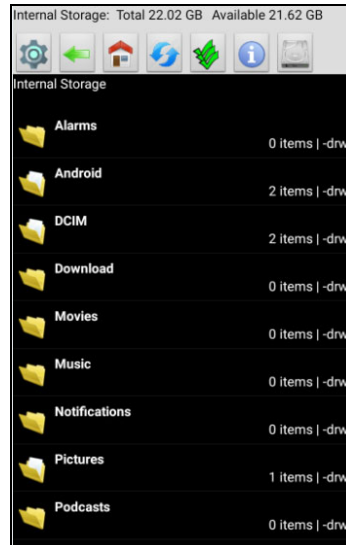
1. Go to **Settings**, Choose **Scanner Options**
2. Enable **Multi Decode Mode**, and input the barcode decode count, back to **Test** screen and start multi decode scan.



For video demonstration, please go to unitech youtube channel :  
<https://youtu.be/coJ6y0hqT9c>

## 3.2 File Manager

1. Tap  go to APPS, and tap  **File Manager.**



: Settings



: Return to the previous page



: Main page



: Refresh



: Folder arrangement





: Folder Information

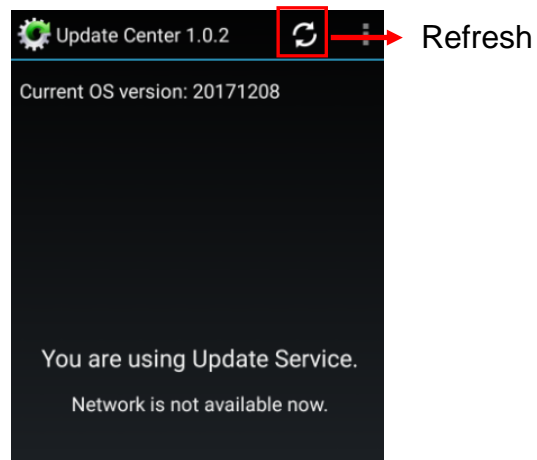


: Solutions

## 3.3 Update Center


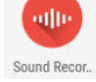

---

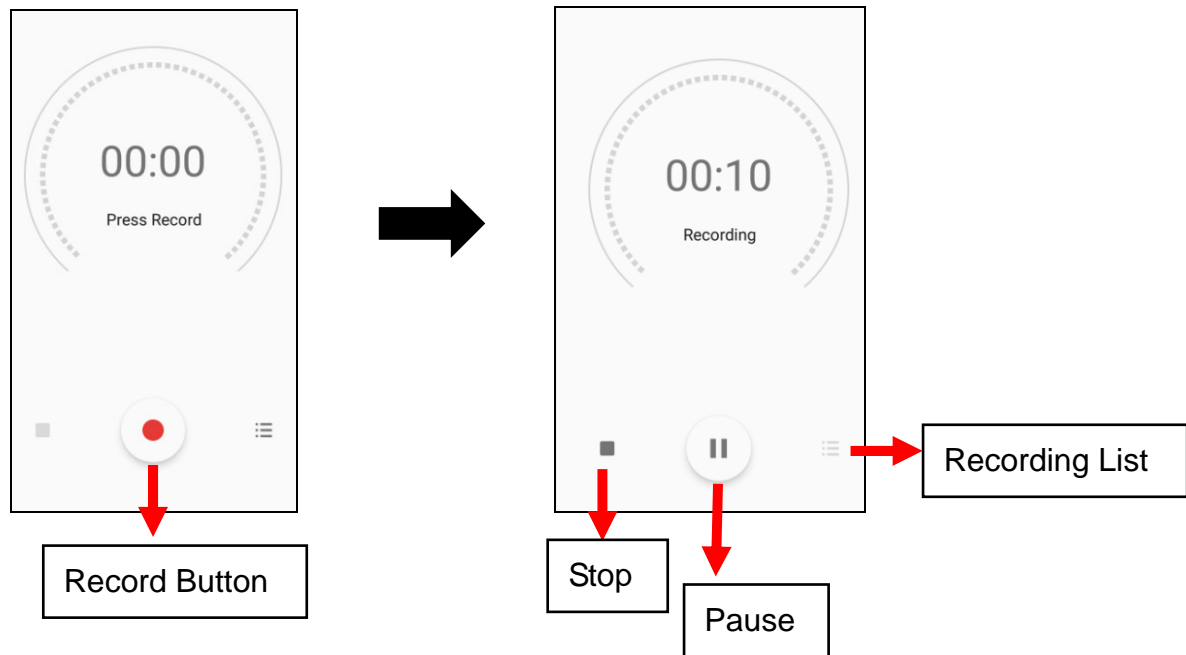
1. Tap  go to APPS, and tap  **Update Center**.
2. To update or check the latest version of software and applications, you will need to do it manually.





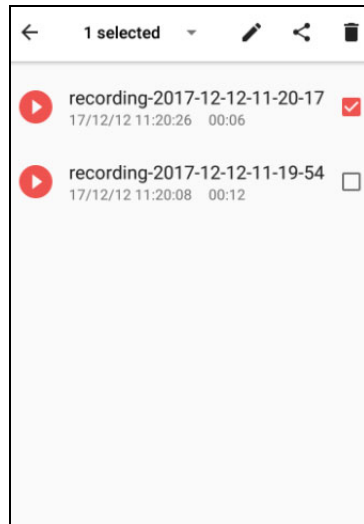


## 3.4 Sound Recorder

1. Tap  go to APPS, and tap  **Sound Recorder**.
2. **Recording** : Tap red dot to start the sound recording.
3. **Save files** : Tap stop button during the sound recording and choose **save**.  
Tap  to check the recording file list.

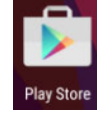


4. **Delete files** : Tap  to the recording file list and long press the file you choose to remove. Tap  and press OK to delete the file.



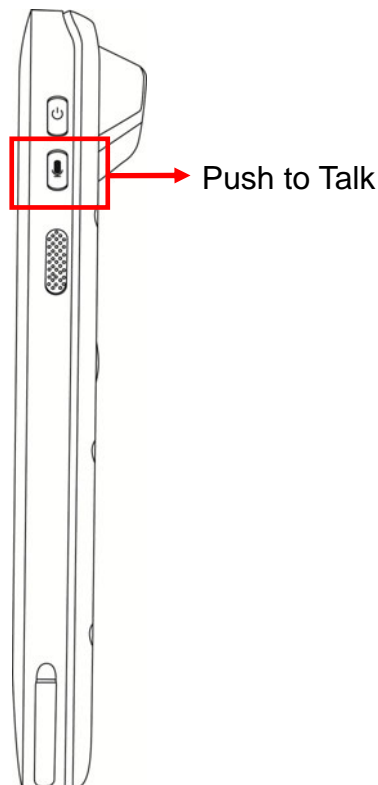
## 3.5 Push to Talk

---



To operate push to talk, please go to Google Play store to download the walkie talkie apps which can support any android device.



For example, *Zello PTT Walkie Talkie* is the most recommended walkie talkie app.



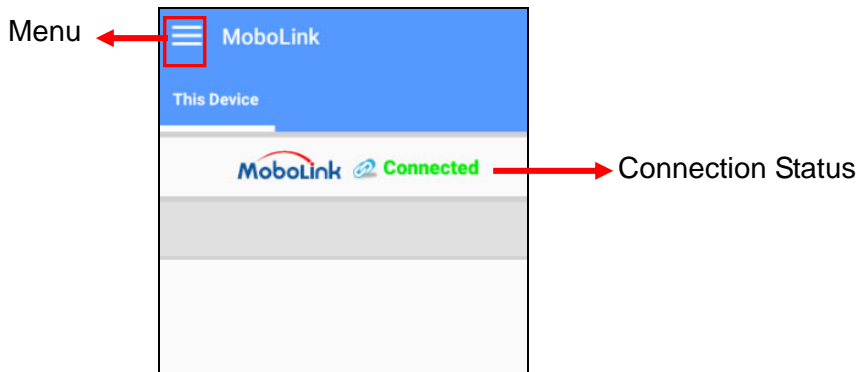
## 3.6 MoboLink

---

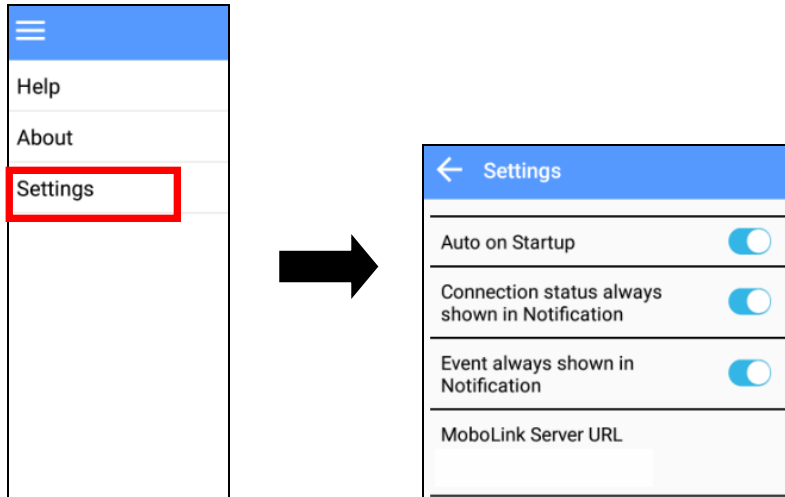
MoboLink is a software platform that helps unitech customers to remote manage their purchased devices and applications. The core of the MoboLink platform provides functionalities in the MDM (Mobile Device Management) and MAM (Mobile Application Management) domains, and then further extends into other management functions such as alert notification management and account management.

1. Tap  go to APPS, and tap  **MoboLink**.

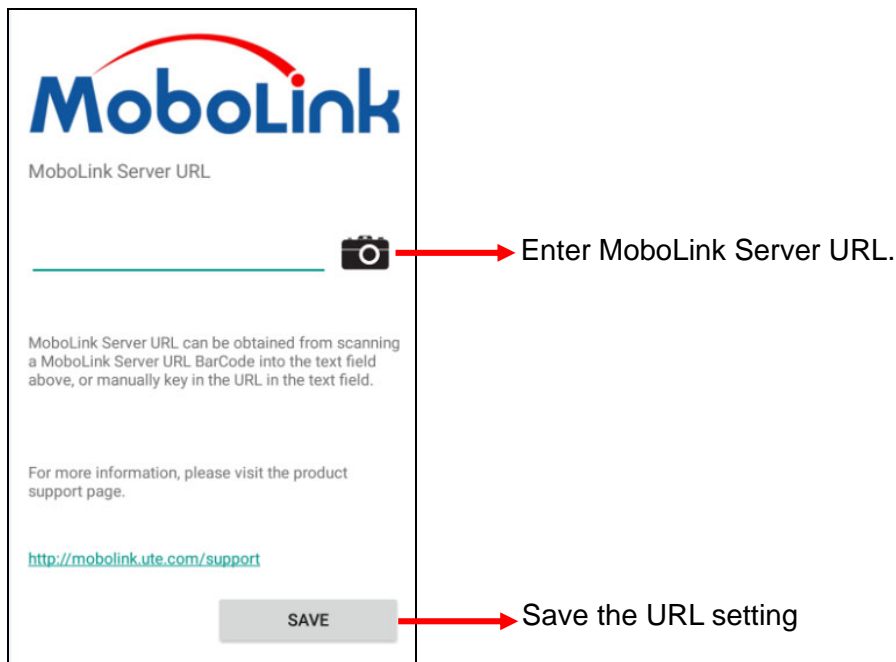
2. **MoboLink** setting is as shown below :



3. Choose  , go to Settings.



4. In the Settings section, go to **MoboLink Server URL** to setup MoboLink server URL.



### **3.5.1 More about MoboLink**

For detailed operation, solution and usage, please refer to **MoboLink** user's guide. ( <http://mobolink.tw.ute.com/support> )