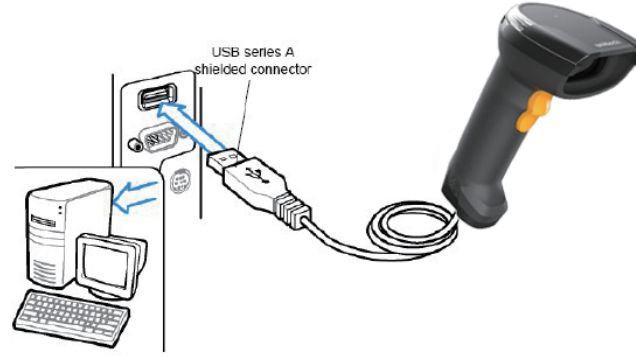




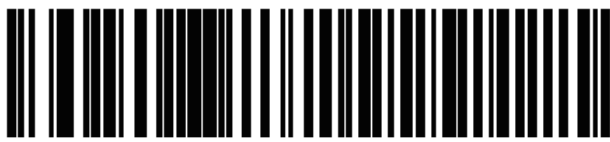
Connecting the Scanner

Connect USB cable to the USB port of a host PC.



USB Device Type

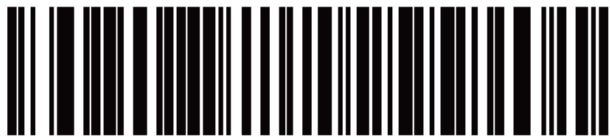
USB HID Keyboard*



SNAPI for SCM Setting



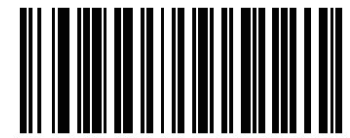
USB CDC Host



Factory Default



Display F/W Version



Reading Mode

Trigger (Level) *



A trigger press activates decode processing. Decode processing continues until the bar code decodes, you release the trigger.

Presentation (Blink)



The engine activates decode processing when it detects a bar code in its field of view. After a period of non-use, the LEDs turn off until the engine senses motion.

Auto Aim



The engine projects the aiming pattern when it senses motion. A trigger press activates decode processing. After two seconds of inactivity the aiming pattern shuts off.

Auto Aim with Illumination



The engine turns on the aiming pattern and internal illumination LEDs when it senses motion. A trigger press activates decode processing. After two seconds of inactivity the aiming pattern and internal illumination LEDs automatically shut off.

* : Default Option



Beep After Good Decode

Enable Beep After Good Decode *



Disable Beep After Good Decode



Beeper Volume

Low Volume



Medium Volume



High Volume*



Beeper Tone

Low Tone



Medium Tone*



High Tone



LED on Good Decode

Enable LED on Good Decode *



Disable LED on Good Decode



USB Country Keyboard Types

North American Standard USB
Keyboard*



German Windows



French Windows



French Canadian Windows
2000/XP



UK English Windows



French Canadian Windows 95/98



French Belgian Windows



Italian Windows



Spanish Windows



Swedish Windows



Portuguese-Brazilian Windows



Japanese Windows (ASCII)



* : Default Option

Thank you for purchasing the unitech product.
For other product documentation, please scan the QR code for more information.

